

24
SECTION

19
TOWN

06
RANGE

ADAMS COUNTY

COUNTY CORNER NO: 80

ROMPORTOL ID: 41906242000

PUBLIC LAND SURVEY MONUMENT RECORD

TYPE OF MONUMENT: HARRISON
ADAMS COUNTY COORDINATES, NAD 83 (2007)

N. 269180.139

E. 557183.542

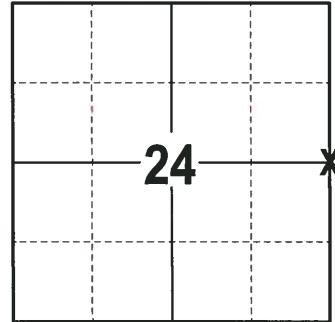
ELEVATION- DATUM

FIELD WORK DATE: 01/29/2018

BASIS FOR MONUMENT LOCATION

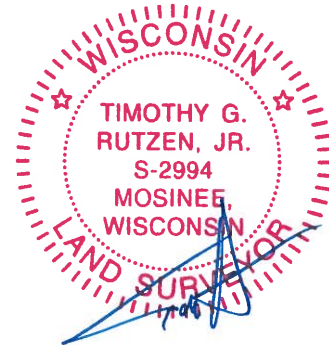
1977 - PLS 1103 RAN EDM/T2 TRAVERSE ALONG THE RANGE LINE FROM THE SE CORNER OF SECTION 36 TO THE NE CORNER OF SECTION 13 TO DETERMINE A SEARCH AREA FOR INVESTIGATION. FOUND NO EVIDENCE OF THE ORIGINAL CORNER, REMONUMENTATION OF THE CORNER OR ANY BEARING TREES. COULDN'T FIND ANY RECORD OF THE CONCRETE MONUMENT WHICH IS SOUTHWEST OF THE CORNER. RELOCATED THE CORNER BY SINGLE PROPORTIONATE MEASUREMENT ON A LINE BETWEEN ADJACENT SECTION CORNERS. SET A HARRISON MONUMENT AT THE CALCULATED LOCATION AND TIED OUT.

2018 - PLS 2994 FOUND A HARRISON MONUMENT 3" ABOVE THE GROUND SURFACE AND 2 WITNESS TREES. THE MONUMENT AGREES WITH THE EXISTING WITNESS TREES. ACCEPTED THE HARRISON MONUMENT AS THE CORNER LOCATION. SET 4 NEW TIES AND MEASURED TO THE TIES AND WITNESS TREES.



LOCATION
(INDICATE CORNER BY "X")

SEAL:

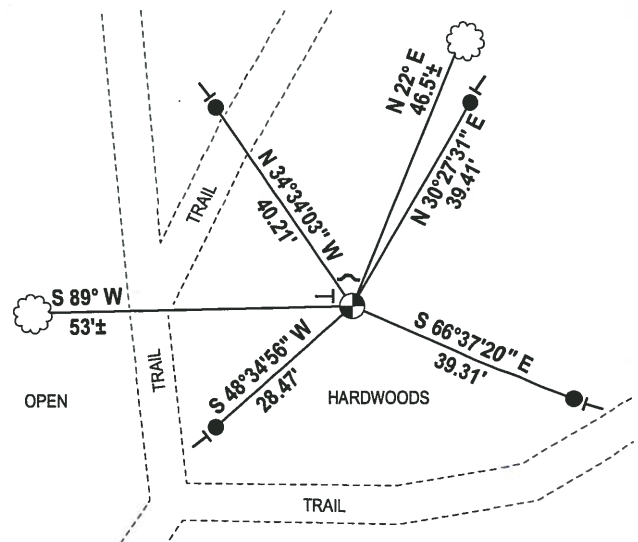
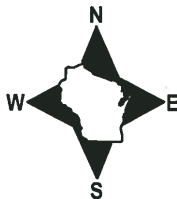


DATA SHOWN HERE ON THIS TIE SHEET IS CORRECT AND COMPLETE TO THE BEST OF MY KNOWLEDGE AND BELIEF.

PROFESSIONAL LAND SURVEYOR

DATE 3-1-18

- TIE SKETCH -



- 3/4" x 18" IRON REBAR SET, 1.50#/FT
- ⊕ HARRISON FOUND
- ✓ STEEL FENCE POST
- └ VINYL "T" POST
- ☁ WITNESS TREE FOUND

Government Land Corner Certificate

ADAMS County
 TYPE OF MONUMENT: HARRISON STD.
 STATE PLANE COORDINATES: N _____
 E _____
 ELEVATION — M.S.L. DATUM: _____
 THETA ANGLE: _____
 FIELD BOOK: 54 PAGE 34
 DRAWN BY: SCOTT SORENSEN

CORNER NO. 80
 SECTION 24
 TOWN 19
 RANGE 6



LOCATION
(Indicated by 'X')

BASIS FOR MONUMENT LOCATION

Show info such as: History of corner, with reference to Vol. and pg., dates, surveyor; exact description of monument replaced; if location computed, by taped or EDM traverse; landowner remarks, etc. (Use reverse side if necessary)

Ran EDM/T2 traverse along Range Line from SE of 36 to NE of 13 to determine search area for investigation.

Could find no evidence of the original corner, remonumentation of the corner or any bearing trees. Could find no record of the concrete monument which is Southwest of the corner.

Relocated corner by single proportionate measure on line between adjacent section corners.

Set monument on 9-8-1977.

SEAL:



DATA SHOWN HERE ON
CERTIFIED CORRECT

Dale C. Hagen
Registered Land Surveyor

DATE: December 27, 1977

TIE SKETCH

Show at least four ties, also fence lines, roads, topo, size and type of witness trees' and if off road - best way to arrive at corner.

NOTE

Ties in trees to nail in disc.

MAINTENANCE RECORD

Date	Init.	Remarks
11-29-78	RN-DA	OK
4-21-83	GR-SS	1 NEW TIE
1-7-93	JG-B5	4- GONE, 3- NEW TIES
2-24-98	JG-SS	OK
Nov '08	SS	OK

