

19 SECTION 19 TOWN 06 RANGE

# ADAMS COUNTY

COUNTY CORNER NO: 82  
ROMPORTOL ID: 41906190020

## PUBLIC LAND SURVEY MONUMENT RECORD

TYPE OF MONUMENT: HARRISON  
ADAMS COUNTY COORDINATES, NAD 83 (2007)

N. 266390.345

E. 528067.458

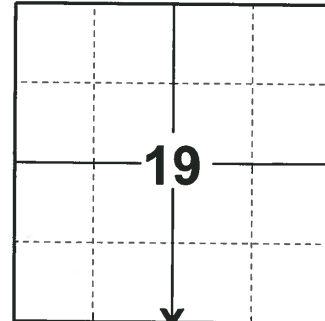
ELEVATION- - - - DATUM - - - -

FIELD WORK DATE: 12/11/2018

### BASIS FOR MONUMENT LOCATION

1973 - PLS 878 EXCAVATED WITH A BACKHOE AND FOUND A 2"X30" IRON PIPE. SET HARRISON MONUMENT AND TIED OUT.

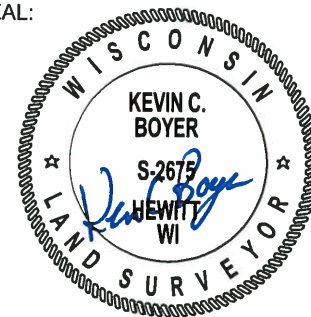
2018 - PLS 2675 FOUND A HARRISON MONUMENT 3" BELOW THE ROAD SURFACE, 1 TIE AND 1 WITNESS. THE MONUMENT AGREES WITH THE EXISTING TIE AND WITNESS. ACCEPTED THE HARRISON MONUMENT AS THE CORNER LOCATION. SET 3 NEW TIES AND MEASURED TO THE TIES AND WITNESS.



**LOCATION**

(INDICATE CORNER BY "X")

SEAL:



DATA SHOWN HERE ON THIS TIE SHEET IS CORRECT AND COMPLETE TO THE BEST OF MY KNOWLEDGE AND BELIEF.

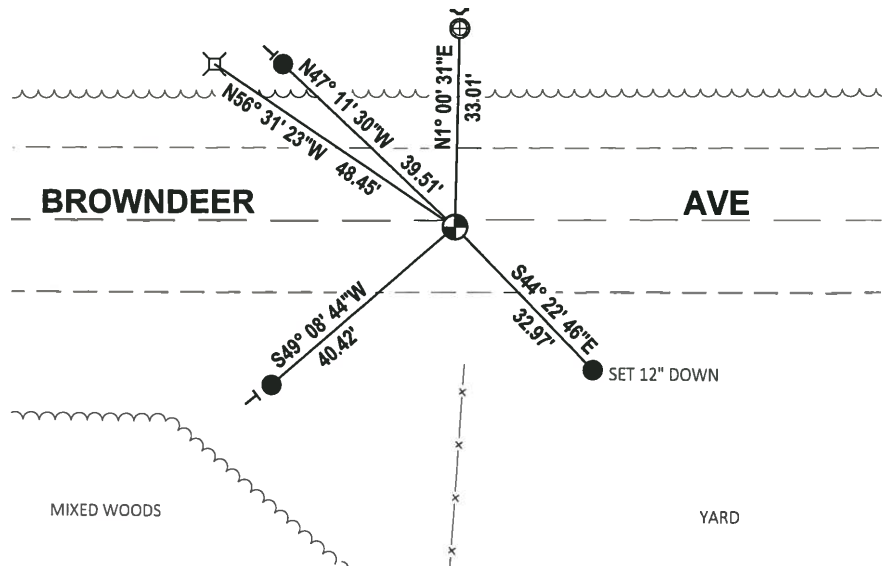
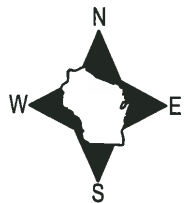
PROFESSIONAL LAND SURVEYOR

DATE 1-18-19

### TIE SKETCH

NOTE: THE CORNER FALLS 1± SOUTH OF THE CENTERLINE OF BROWND EER AVE.

MIXED WOODS



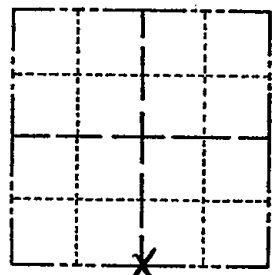
- SET 3/4" x 18" IRON REBAR, 1.50#/FT
- ⊕ FOUND 1" O.D. IRON PIPE
- ⊕ FOUND HARRISON MONUMENT
- | VINYL "T" POST
- ↙ STEEL FENCE POST

# ADAMS COUNTY

## Survey Monument Record

TYPE OF MONUMENT: 30" HARRISON  
 STATE PLANE COORDINATES: N \_\_\_\_\_  
 E \_\_\_\_\_  
 ELEVATION — M.S.L. DATUM: \_\_\_\_\_  
 THETA ANGLE: \_\_\_\_\_  
 FIELD BOOK: 108 PAGE 58

CORNER NO. 296  
 SECTION 19  
 TOWN 19  
 RANGE 6



LOCATION  
(Indicated by 'X')

SEAL:



### BASIS FOR MONUMENT LOCATION

(Use reverse side if necessary)  
 Show info such as: History of corner, with reference to Vol. and pg, dates, surveyor; exact description of monument replaced; if location computed, by taped or EDM traverse; landowner remarks, etc.

Excavated with backhoe.  
 Found 2" x 30" iron pipe.  
 Monumented same.

OK 11-27-78 RN-DA  
 3-11-83 GR-SS OK  
 1-GONE, 2-NEW TIES 1-A-93 BS-JG  
 1-GONE, 1-NEW, 2-11-98 - JG  
 1-NEW, MON OK, 12-12-02 - JG  
 1-GONE, 12-21-07 - JG-SS

CERTIFIED CORRECT:  
*Anthony B. Kiedrowski*  
 Registered Land Surveyor  
 DATE: 9/18/73

### TIE SKETCH

(Show at least four ties)

