

19
SECTION

19
TOWN

06
RANGE

ADAMS COUNTY

COUNTY CORNER NO: 83

ROMPORTOL ID: 41906190000

PUBLIC LAND SURVEY MONUMENT RECORD

TYPE OF MONUMENT: HARRISON (BROKEN-TOP)

ADAMS COUNTY COORDINATES, NAD 83 (2007)

N. 266435.753

E. 530773.766

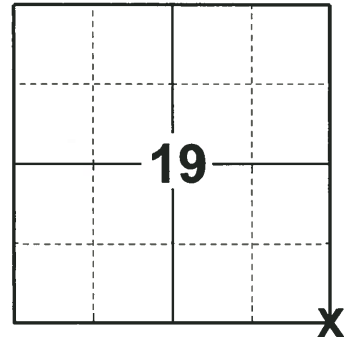
ELEVATION- DATUM

FIELD WORK DATE: 12/11/2018

BASIS FOR MONUMENT LOCATION

1971- PLS 981 SET A HARRISON MONUMENT AND TIED OUT.

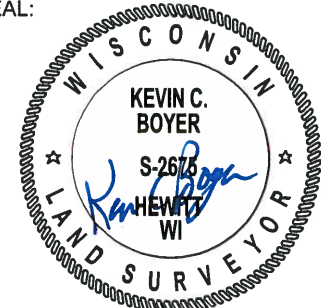
2018 - PLS 2675 FOUND A HARRISON MONUMENT WITH A BROKEN-TOP 6" BELOW THE ROAD SURFACE, 1 PROPERTY IRON AND 1 WITNESS. THE MONUMENT AGREES WITH THE EXISTING WITNESS. ACCEPTED THE HARRISON MONUMENT WITH A BROKEN-TOP AS THE CORNER LOCATION. SET 4 NEW TIES AND MEASURED MEASURED TO THE TIES, PROPERTY IRON AND WITNESS.



LOCATION

(INDICATE CORNER BY "X")

SEAL:



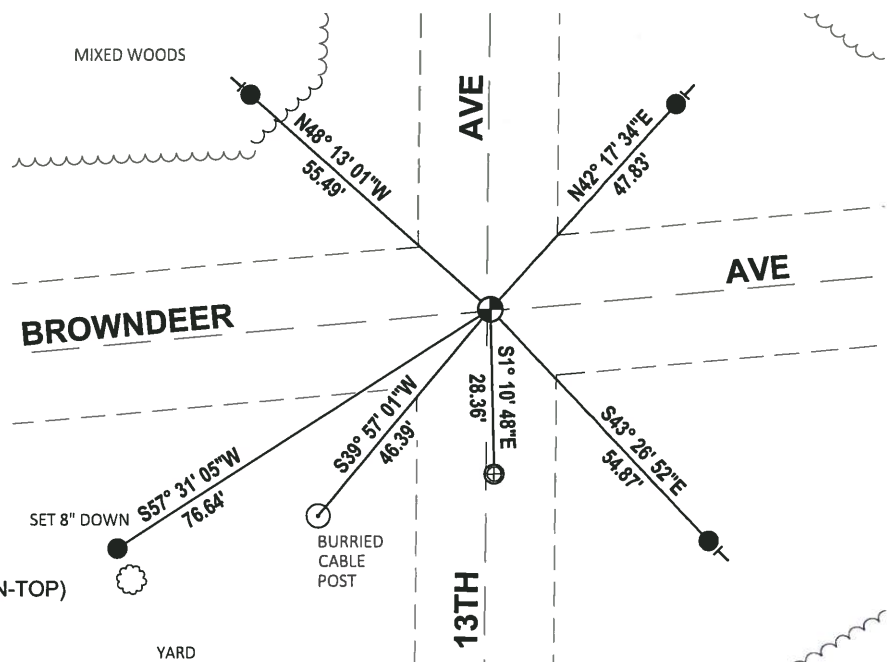
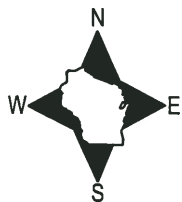
DATA SHOWN HERE ON THIS TIE SHEET IS CORRECT AND COMPLETE TO THE BEST OF MY KNOWLEDGE AND BELIEF.

PROFESSIONAL LAND SURVEYOR

DATE 1-18-19

TIE SKETCH

NOTE: THE CORNER FALLS 1± EAST OF THE CENTERLINE OF 13TH AVE.



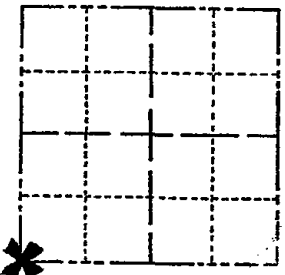
- SET 3/4" x 18" IRON REBAR, 1.50#/FT
- ⊕ FOUND 1" O.D. IRON PIPE
- ⊙ FOUND HARRISON MONUMENT (BROKEN-TOP)
- ┌ VINYL "T" POST
- ⊗ 4" WHITE PINE TREE

ADAMS COUNTY

Survey Monument Record

TYPE OF MONUMENT: 30" HARRISON
 STATE PLANE COORDINATES: N _____
 E _____
 ELEVATION — M.S.L. DATUM: _____
 THETA ANGLE: _____
 FIELD BOOK: 104 PAGE 81

CORNER NO. 50
 SECTION 20
 TOWN 19
 RANGE 6



LOCATION
(Indicated by 'X')

SEAL:

BASIS FOR MONUMENT LOCATION

(Use reverse side if necessary)

Show info such as: History of corner, with reference to Vol. and pg, dates, surveyor; exact description of monument replaced; if location computed, by taped or EDM traverse; landowner remarks, etc.

Set monument

September 2, 1971

Sam T. Mullen R.L.S. S-981

OK 11-27-78 RN-DA
 3-11-83 GR-SS GK
 OK - 1-4-93 BS-JG
 OK, 2-11-98-JG
 1-GONE, 2-NEW, TOP BROKEN OFF MON. 12-12-02-JG
 OK, 12-20-07-JG-SS

CERTIFIED CORRECT:

Registered Land Surveyor

DATE: _____

TIE SKETCH

(Show at least four ties)

