

20
SECTION

19
TOWN

06
RANGE

ADAMS COUNTY

COUNTY CORNER NO: 84

ROMPORTOL ID: 41906200020

PUBLIC LAND SURVEY MONUMENT RECORD

TYPE OF MONUMENT: SURVEY NAIL
ADAMS COUNTY COORDINATES, NAD 83 (2007)

N. 266454.246

E. 533404.027

ELEVATION- - - DATUM - -

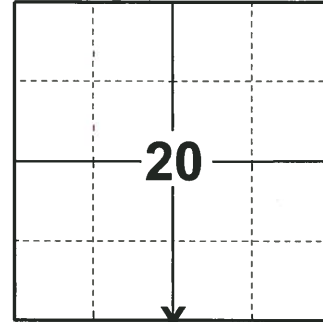
FIELD WORK DATE: 12/11/2018

BASIS FOR MONUMENT LOCATION

1979 - PLS 1478 FOUND NO EVIDENCE OF ANY PREVIOUS MONUMENTATION OR WITNESSES. CALCULATED THE CORNER LOCATION EQUIDISTANT AND ON LINE BETWEEN ADJACENT SECTION CORNERS. NO EXCAVATION WAS ATTEMPTED DUE TO SEARCH AREA LOCATION IN STH 13. SET AN ALUMINUM CAP AT THE CALCULATED LOCATION AND TIED OUT.

2008 - PLS 1452 FOUND A RR SPIKE ON 9-8-2008, PRIOR TO 2008 RESURFACING PROJECT. SET NEW REFERENCE MONUMENTS (4" ALUMINUM DISKS SET IN CONCRETE) ON 10-2-2008. RE-SET SECTION CORNER ON 11-3-2008 AND MEASURED TIES.

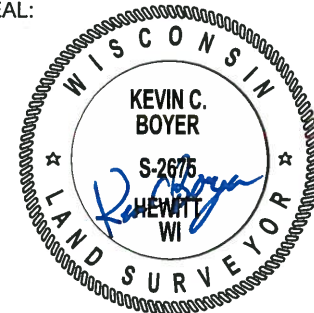
2018 - PLS 2675 FOUND A SURVEY NAIL IN THE ROAD SURFACE AND 4 TIES. REMOVED THE SURVEY NAIL AND FOUND NO EVIDENCE OF ANY ADDITIONAL MONUMENTS. THE SURVEY NAIL LOCATION AGREES WITH THE EXISTING TIES. ACCEPTED THE SURVEY NAIL LOCATION AS THE CORNER LOCATION. RE-SET THE SURVEY NAIL IN IT'S LOCATION AND RE-MEASURED TO THE EXISTING TIES.



LOCATION

(INDICATE CORNER BY "X")

SEAL:



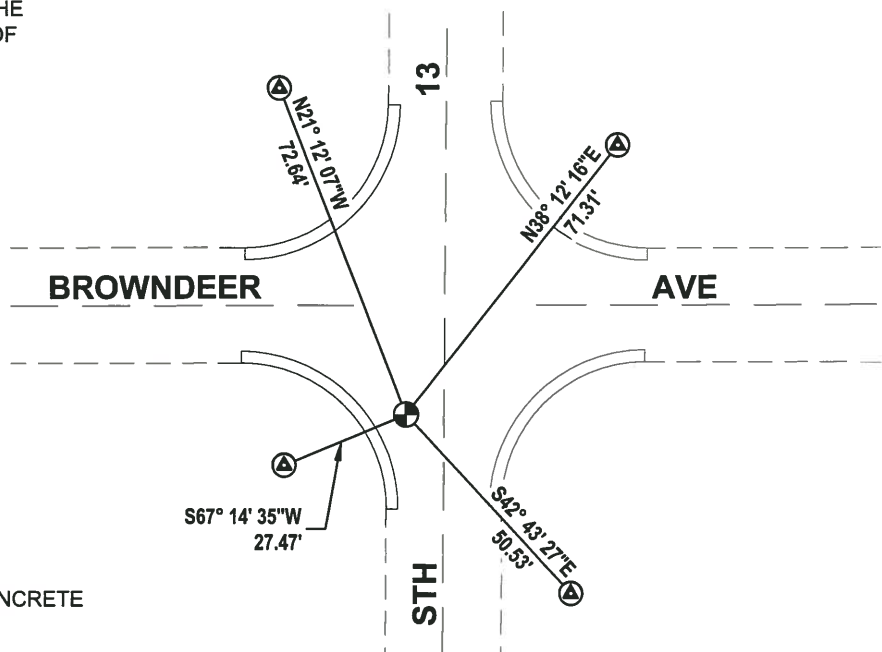
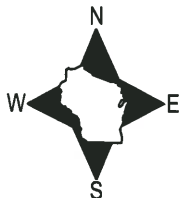
DATA SHOWN HERE ON THIS TIE SHEET IS CORRECT AND COMPLETE TO THE BEST OF MY KNOWLEDGE AND BELIEF.

PROFESSIONAL LAND SURVEYOR

DATE 1-18-19

TIE SKETCH

NOTE: THE CORNER FALLS 8'± WEST OF THE CENTERLINE OF STH 13 AND 23'± SOUTH OF THE CENTERLINE OF BROWND EER AVE.



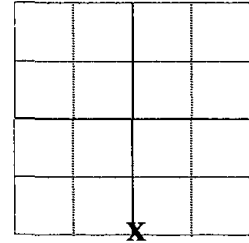
- FOUND WISDOT ALUMINUM CAP IN CONCRETE
- ⊕ RE-SET SURVEY NAIL

ADAMS COUNTY

Survey Monument Record

TYPE OF MONUMENT: Berntsen Nail
 STATE PLANE COORDINATES: N _____
 E _____
 ELEVATION — M.S.L. DATUM: _____
 THETA ANGLE: _____
 FIELD BOOK: _____ PAGE _____
 DRAWN BY: D. Christie

CORNER NO. 84
 SECTION 20
 TOWN 19 N
 RANGE 6 E



LOCATION
(Indicated by 'X')

BASIS FOR MONUMENT LOCATION

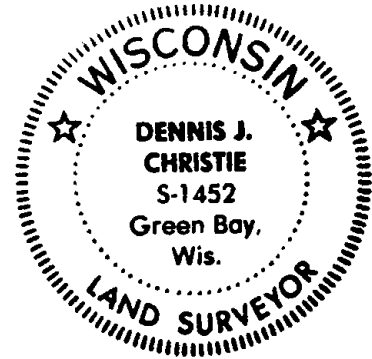
(Use reverse side if necessary)

Show info such as: History of corner, with reference to Vol. and pg. dates, surveyor; exact description of monument replaced; if location computed, by taped or EDM traverse; landowner remarks, etc.

Found RR spike on 9-8-2008, prior to 2008 Resurfacing Project. Set new reference monuments (4" Alum. Disks set in concrete) on 10-2-2008. Re-set section corner on 11-3-2008 and measured Ties.

SEE G. RHINEHART TIE SHEET 01-02-79

SEAL:



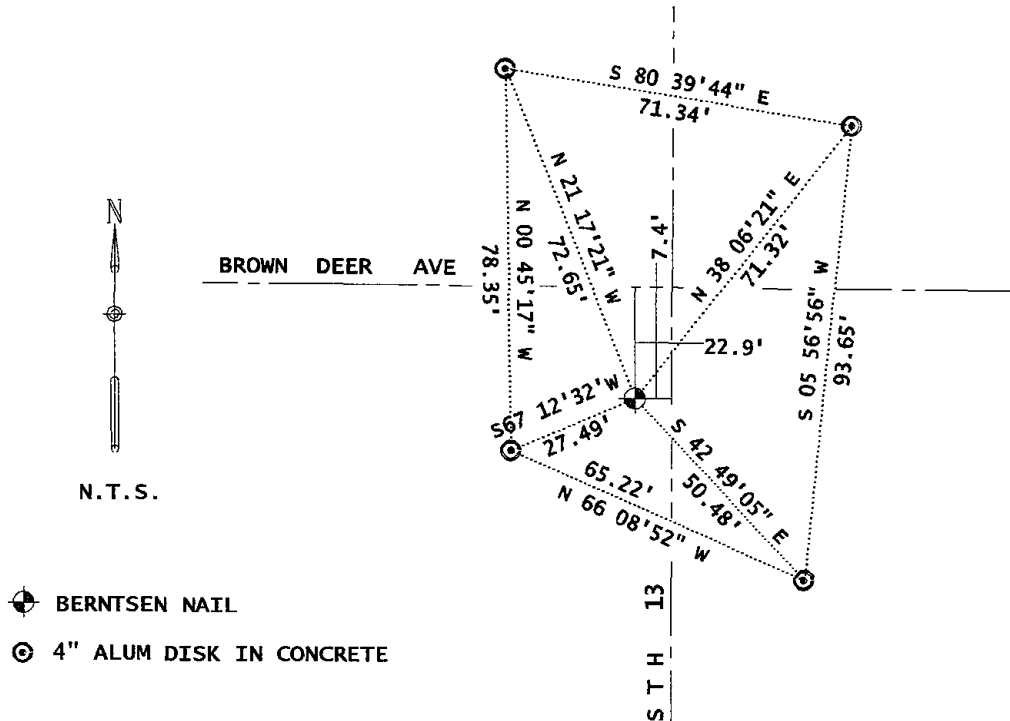
CERTIFIED CORRECT:

Dennis J. Christie
 Registered Land Surveyor

Date: 12-12-2008

TIE SKETCH

(Show at least four ties)



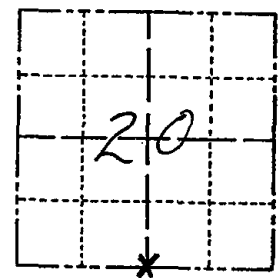
Government Land Corner Certificate

ADAMS County

CORNER NO. 84
 SECTION 20
 TOWN 19 N.
 RANGE 6 E

TYPE OF MONUMENT: ALUM. CAP - Dept. of Transportation
 STATE PLANE COORDINATES: N _____ Standard Cap. R.R. SPIKE
 E _____

ELEVATION — M.S.L. DATUM: _____
 THETA ANGLE: _____
 FIELD BOOK: 57 PAGE 91
 DRAWN BY: JOHN S. KEDROWSKI



LOCATION
(Indicated by 'X')

BASIS FOR MONUMENT LOCATION

Show info such as: History of corner, with reference to Vol. and pg., dates, surveyor; exact description of monument replaced; if location computed, by taped or EDM traverse; landowner remarks, etc. (Use reverse side if necessary)

Set equidistant and on line between adjacent section corners. No excavation was attempted due to search area location in STH "13". No evidence of any previous monumentation or witnesses was found.

SEE UPDATE 12-12-08
 DENNIS CHRISTIE

SEAL:



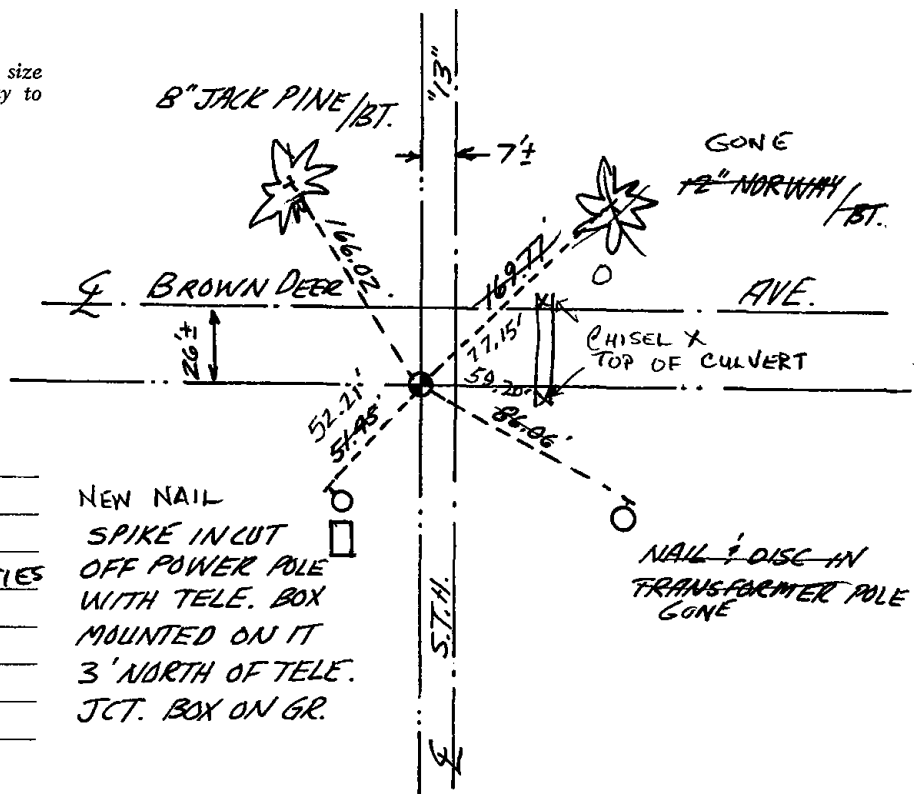
DATA SHOWN HERE ON
 CERTIFIED CORRECT:

Gregory P Rhinehart
 Registered Land Surveyor

DATE: Jan 2, 79

TIE SKETCH

Show at least four ties, also fence lines, roads, topo, size and type of witness trees and if off road - best way to arrive at corner.



MAINTENANCE RECORD

Date	Init.	Remarks
3-11-83	GR-SS	OK
8-19-92	JG-TS	2-TIES GONE, 2-NEW TIES
4-24-98	JG-SS	OK
5-19-03	JG-SS	OK
11-14-07	JG-SS	OK

NEW NAIL
 SPIKE INCUT
 OFF POWER POLE
 WITH TELE. BOX
 MOUNTED ON IT
 3' NORTH OF TELE.
 JCT. BOX ON GR.

NAIL & DISC IN
 TRANSFORMER POLE
 GONE