

20 SECTION 19 TOWN 06 RANGE

ADAMS COUNTY

COUNTY CORNER NO: 85
 ROMPORTOL ID: 4190620000

PUBLIC LAND SURVEY MONUMENT RECORD

TYPE OF MONUMENT: HARRISON (BROKEN-TOP)
 ADAMS COUNTY COORDINATES, NAD 83 (2007)

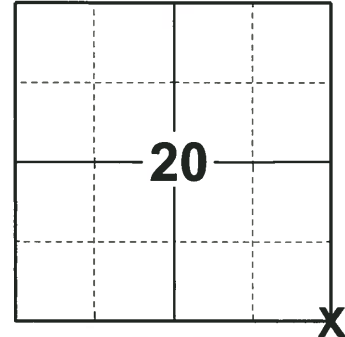
N. 266472.929
 E. 536034.835

ELEVATION- DATUM

FIELD WORK DATE: 12/11/2018

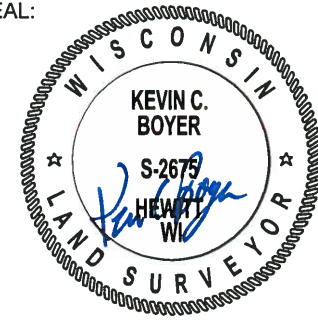
BASIS FOR MONUMENT LOCATION

1971 - PLS 981 FOUND A PK NAIL. SET A HARRISON MONUMENT AND TIED OUT.
 2018 - PLS 2675 FOUND A HARRISON MONUMENT WITH A BROKEN-TOP 12" BELOW THE ROAD SURFACE AND 2 WITNESSES. THE MONUMENT AGREES WITH THE EXISTING WITNESSES. ACCEPTED THE HARRISON MONUMENT WITH A BROKEN-TOP AS THE CORNER LOCATION. SET 4 NEW TIES AND MEASURED TO THE TIES AND WITNESSES.



LOCATION
 (INDICATE CORNER BY "X")

SEAL:



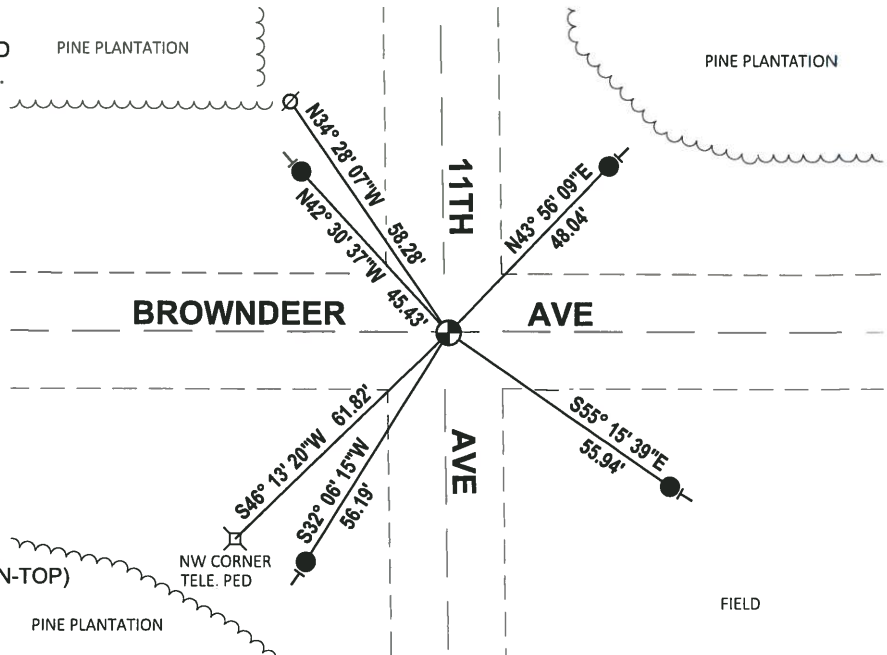
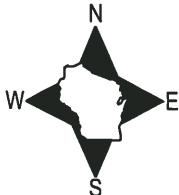
DATA SHOWN HERE ON THIS TIE SHEET IS CORRECT AND COMPLETE TO THE BEST OF MY KNOWLEDGE AND BELIEF.

PROFESSIONAL LAND SURVEYOR

DATE 1-18-19

TIE SKETCH

NOTE: THE CORNER FALLS 0.5± SOUTH OF THE CENTERLINE OF BROWNDDEER AVE AND 1± EAST OF THE CENTERLINE OF 11TH AVE.



- SET 3/4" x 18" IRON REBAR, 1.50#/FT
- ⊕ FOUND HARRISON MONUMENT (BROKEN-TOP)
- ⊙ WITNESS POWER POLE
- ┌ VINYL "T" POST

ADAMS COUNTY

Survey Monument Record

TYPE OF MONUMENT: 30" HARRISON

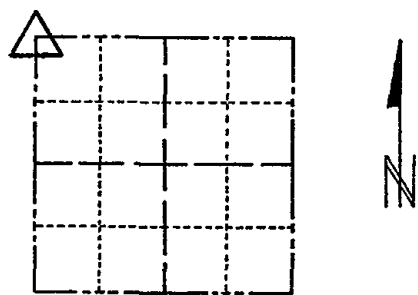
STATE PLANE COORDINATES: N _____
E _____

ELEVATION — M.S.L. DATUM: _____

THETA ANGLE: _____

FIELD BOOK: 104 PAGE 86

CORNER NO. 55
SECTION 28
TOWN 19
RANGE 6



LOCATION
(Indicated by 'X')

SEAL:

BASIS FOR MONUMENT LOCATION

(Use reverse side if necessary)

Show info such as: History of corner, with reference to Vol. and pg, dates, surveyor; exact description of monument replaced; if location computed, by taped or EDM traverse; landowner remarks, etc.

Found "PK" nail and set monument

November 4, 1971

Sam T. Mullen R.L.S. S-981

OK 2-11-98 - JG

1-GONE, 3-NEW, MON. OK, 12-12-02 - JG

OK, 12-12-07 - SG-SS

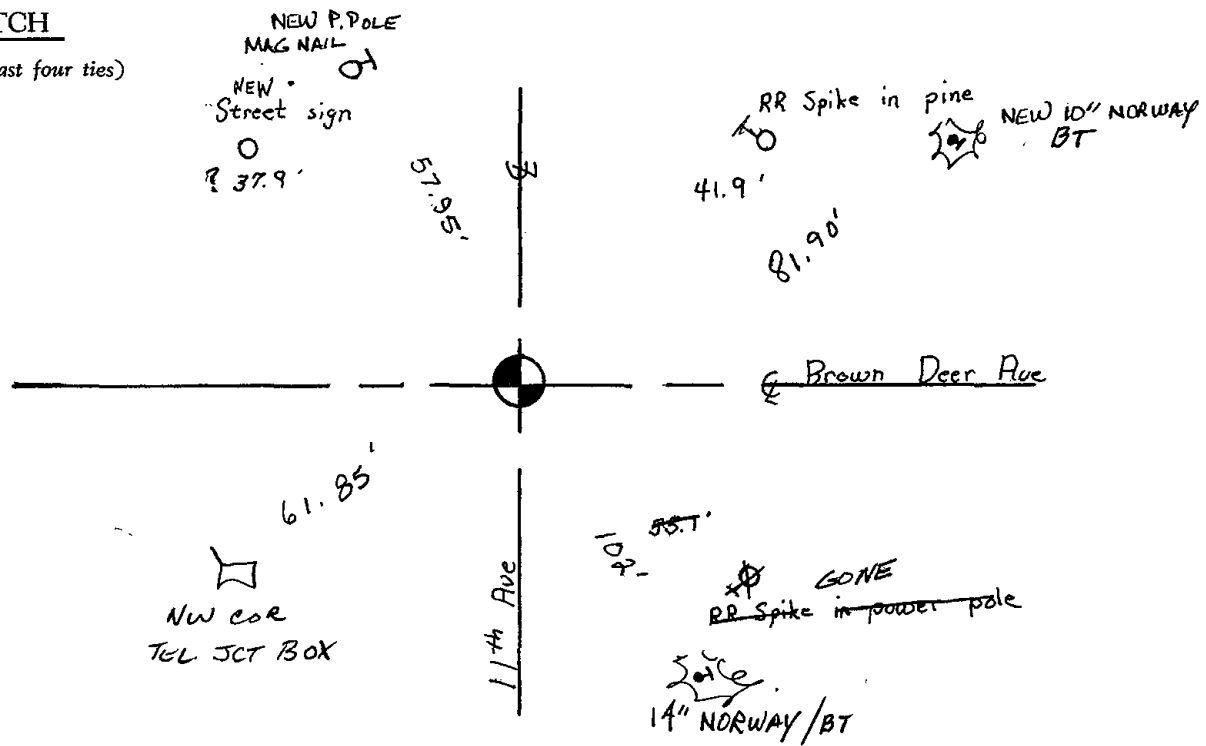
CERTIFIED CORRECT:

Registered Land Surveyor

DATE: _____

TIE SKETCH

(Show at least four ties)



Survey Monument Record

TYPE OF MONUMENT: 30" IRON

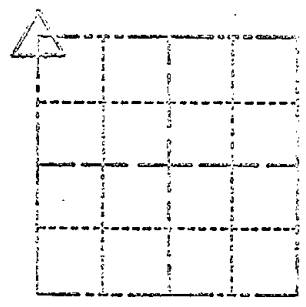
STATE PLANE COORDINATES: N _____
 E _____

ELEVATION — M.S.L. DATUM: _____

THETA ANGLE: _____

FIELD BOOK: 206 PAGE 86

SECTION 20
 TOWN 18
 RANGE 6



LOCATION
(Indicated by 'X')

SEAL:

BASIS FOR MONUMENT LOCATION

(Use reverse side if necessary)

Show info such as: History of corner, with reference to Vol. and pg. Dates, surveyor; exact description of monument; replaced; if location computed, by taped or E.D.V. traverse; landowner remarks, etc.

Found "PK" nail and set monument

November 4, 1972

Sam T. Miller R.L.S. S-931

OK 11-22-78 RN-SS
 3-10-83 GR-SS OK
 OK - 10/5/92-JG

CERTIFIED CORRECT:

Registered Land Surveyor

DATE: _____

THE SKETCH

(Show at least four ties)

