

24 SECTION 19 TOWN 06 RANGE

ADAMS COUNTY

COUNTY CORNER NO: 92
 ROMPORTOL ID: 41906240020

PUBLIC LAND SURVEY MONUMENT RECORD

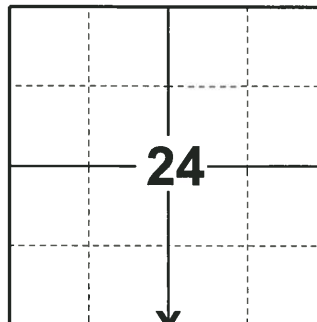
TYPE OF MONUMENT: HARRISON (BROKEN-TOP)
 ADAMS COUNTY COORDINATES, NAD 83 (2007)

N. 266536.157

E. 554535.865

ELEVATION- DATUM

FIELD WORK DATE: 12/05/2018



LOCATION

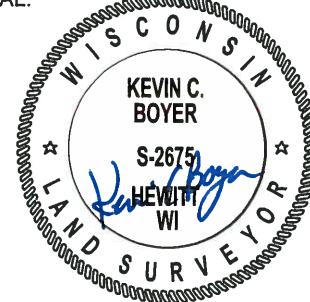
(INDICATE CORNER BY "X")

BASIS FOR MONUMENT LOCATION

1977 - PLS 1103 RAN EDM TRAVERSE AROUND SECTION 24 AND PARTS OF MANY ADJOINING SECTIONS TO DETERMINE SEARCH AREA FOR INVESTIGATION. COULD FIND NO EVIDENCE OF THE ORIGINAL CORNER OR ANY REMONUMENTATION. COULD FIND NO RECORD OF THE 5" IRON PIPE HAVING BEEN SET AS A SURVEY MONUMENT. RELOCATED CORNER BY SINGLE PROPORTIONATE MEASURE BETWEEN ADJACENT SECTION CORNERS. SET HARRISON MONUMENT.

2018 - PLS 2675 FOUND A HARRISON MONUMENT WITH A BROKEN-TOP 24" BELOW THE ICE AND WATER AND 1 WITNESS. THE MONUMENT AGREES WITH THE EXISTING WITNESS. ACCEPTED THE HARRISON MONUMENT WITH A BROKEN-TOP AS THE CORNER LOCATION. SET 4 NEW TIES AND MEASURED TO THE TIES AND WITNESS.

SEAL:



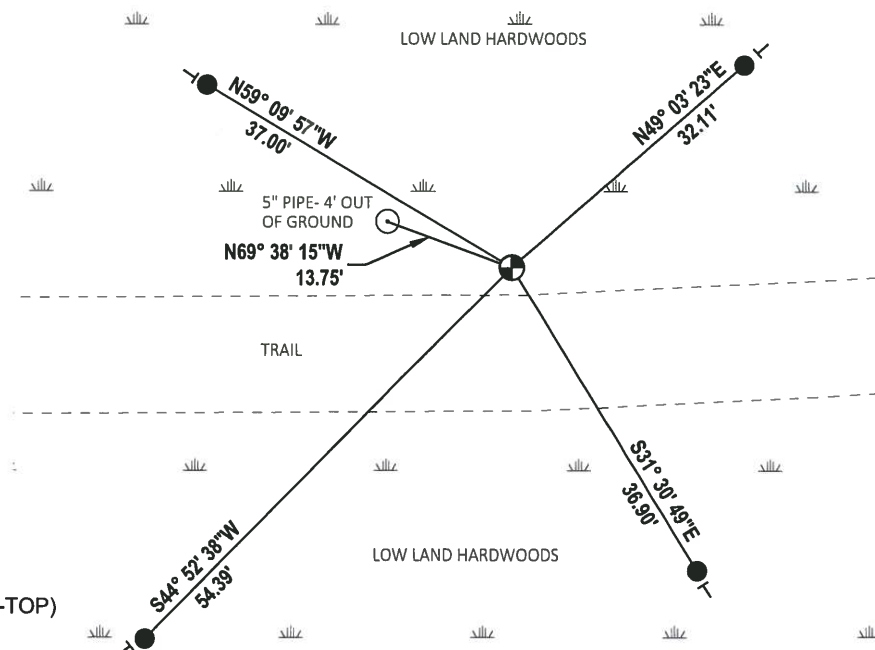
DATA SHOWN HERE ON THIS TIE SHEET IS CORRECT AND COMPLETE TO THE BEST OF MY KNOWLEDGE AND BELIEF.

PROFESSIONAL LAND SURVEYOR

DATE 1-18-19

TIE SKETCH

NOTE: THE CORNER FALLS 9'± NORTH OF THE CENTERLINE OF THE TRAIL.



- SET 3/4" x 48" IRON REBAR, 1.50#/FT
- ⊕ FOUND HARRISON MONUMENT (BROKEN-TOP)
- ┌ VINYL "T" POST

Government Land Corner Certificate

ADAMS County
 TYPE OF MONUMENT: HARRISON STD.
 STATE PLANE COORDINATES: N _____
 E _____
 ELEVATION — M.S.L. DATUM: _____
 THETA ANGLE: _____
 FIELD BOOK: 54 PAGE 33
 DRAWN BY: SCOTT SORENSEN

CORNER NO. 92
 SECTION 24
 TOWN 19
 RANGE 6



LOCATION
(Indicated by 'X')

BASIS FOR MONUMENT LOCATION

Show info such as: History of corner, with reference to Vol. and pg., dates, surveyor; exact description of monument replaced; if location computed, by taped or EDM traverse; landowner remarks, etc. (Use reverse side if necessary)

Ran EDM/T2 traverse around Section 24 and parts of many adjoining sections to determine search area for investigation.

Could find no evidence of the original corner or any remonumentation. Could find no record of the 5" Iron Pipe having been set as a survey monument.

Relocated corner by single proportionate measure between adjacent section corners.

Set monument on 9-8-1977.

SEAL:



DATA SHOWN HERE ON
CERTIFIED CORRECT:

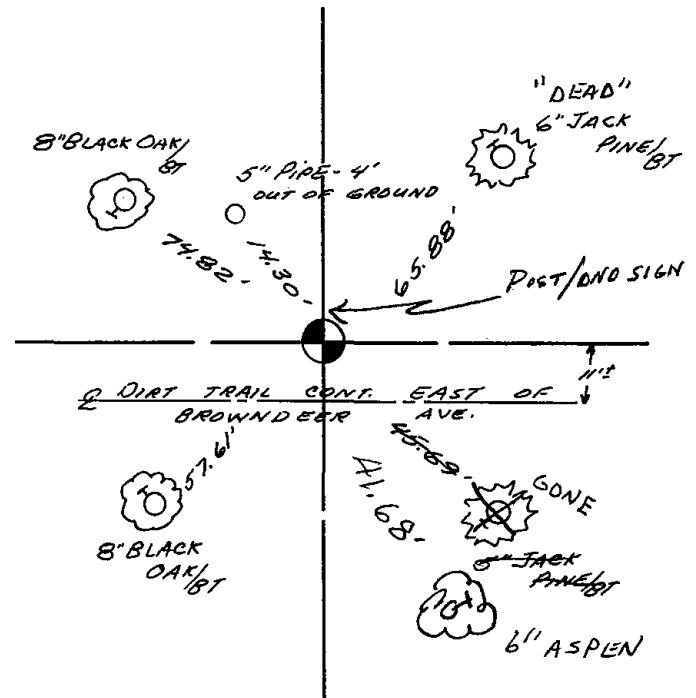
Dale C. Hagen
 Registered Land Surveyor
 DATE: 12-27-1977

TIE SKETCH

Show at least four ties, also fence lines, roads, topo, size and type of witness trees' and if off road - best way to arrive at corner.

NOTE

Ties in trees to nail in disc.



MAINTENANCE RECORD

Date	Init.	Remarks
11-27-78	RN-DA	OK
3-10-83	GR-SS	OK
1-8-93	SG-BS	1-GONE, 1-NEW TIE
2-13-98	JG	OK
1-28-03	JG	OK
12-17-07	JG-SS	OK