

29 SECTION 19 TOWN 06 RANGE

# ADAMS COUNTY

COUNTY CORNER NO: 96  
 ROMPORTOL ID: 41906292000

## PUBLIC LAND SURVEY MONUMENT RECORD

TYPE OF MONUMENT: HARRISON  
 ADAMS COUNTY COORDINATES, NAD 83 (2007)

N. 263846.437

E. 536079.861

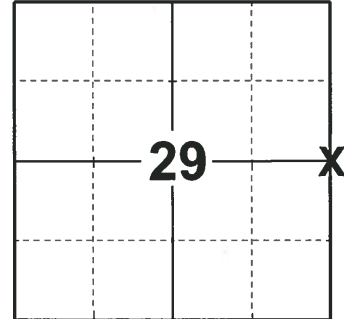
ELEVATION- \_\_\_\_\_ DATUM \_\_\_\_\_

FIELD WORK DATE: 12/14/2018

### BASIS FOR MONUMENT LOCATION

1980 - PLS 878 EXCAVATED A 6' STRIP ALL THE WAY ACROSS THE ROAD, AT THE HALF WAY DISTANCE BETWEEN SECTION CORNERS. ALSO EXCAVATED AN 8' X 12' AREA FURTHER NORTH OPPOSITE EVIDENCE OF AN OLD TREE LINE TO THE WEST. FOUND A 3/4" X 24" REBAR IN THE FIRST HOLE. FOUND A SPIKE AT THE CENTERLINE AND A SPIKE/TAB AT HALF WAY AND ON LINE BETWEEN SECTION CORNERS. MONUMENTED THE SPIKE FOUND AT THE CENTERLINE BECAUSE IT IS VERY NEARLY HALF WAY, AND BECAUSE IT WAS 33.00' EAST OF A 3/4" IRON PIPE SET IN THE CORNER OF A RELATIVELY NEW FENCE. (5 - 10 YEARS OLD) WAS UNABLE TO DETERMINE WHO PUT THE PIPE THERE. SET A HARRISON MONUMENT AND TIED OUT.

2018 - PLS 2675 FOUND A HARRISON MONUMENT 4" BELOW THE ROAD SURFACE, 1 TIE AND 1 PROPERTY IRON. THE MONUMENT AGREES WITH THE EXISTING TIE. ACCEPTED THE HARRISON MONUMENT AS THE CORNER LOCATION. SET 2 NEW TIES AND MEASURED TO THE TIES AND PROPERTY IRON.



**LOCATION**  
 (INDICATE CORNER BY "X")

SEAL:



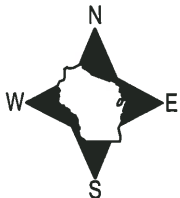
DATA SHOWN HERE ON THIS TIE SHEET IS CORRECT AND COMPLETE TO THE BEST OF MY KNOWLEDGE AND BELIEF.

PROFESSIONAL LAND SURVEYOR

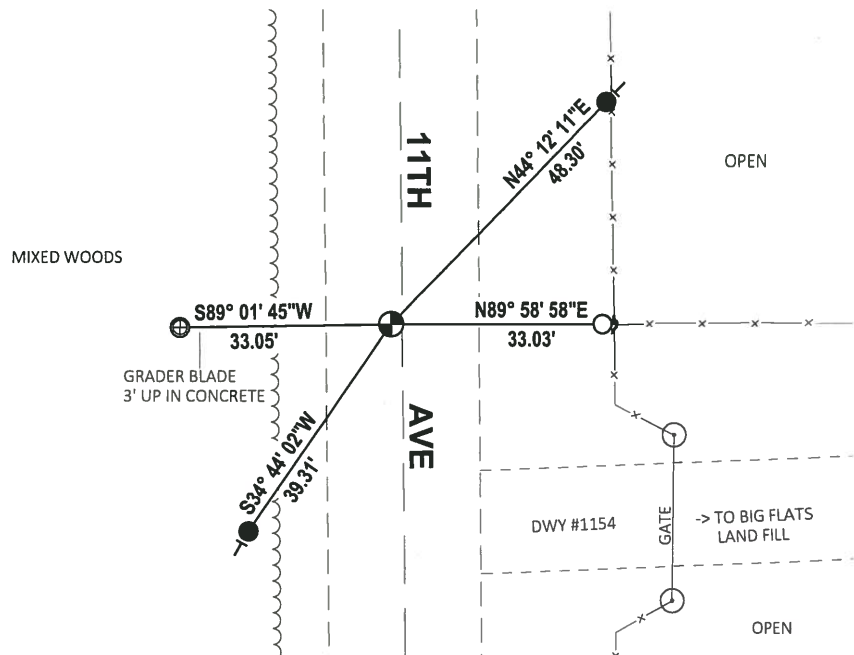
DATE 1-18-19

### TIE SKETCH

NOTE: THE CORNER FALLS 2'± WEST OF THE CENTERLINE OF 11TH AVE.



- SET 3/4" x 18" IRON REBAR, 1.50#/FT
- FOUND 3/4" IRON ROD
- ⊕ FOUND 1" O.D. IRON PIPE
- ⊙ FOUND HARRISON MONUMENT
- ┌ STEEL FENCE POST
- ┘ VINYL "T" POST



# Government Land Corner Certificate

SET NAR.  
4/22/80 - RN/SS

Adams County

REPLACE PIX  
SPRING '80  
Temp Nail

CORNER NO. 96  
SECTION 29  
TOWN 19  
RANGE 6

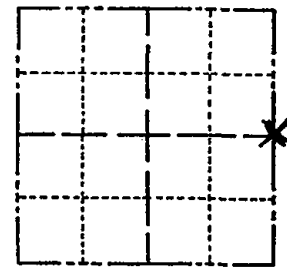
TYPE OF MONUMENT: Harrison Monument  
STATE PLANE COORDINATES: N \_\_\_\_\_  
E \_\_\_\_\_

ELEVATION — M.S.L. DATUM: \_\_\_\_\_

THETA ANGLE: \_\_\_\_\_

FIELD BOOK: 83 (102) PAGE 66 (43)

DRAWN BY: Greg Rhinehart



LOCATION  
(Indicated by 'X')

## BASIS FOR MONUMENT LOCATION

Show info such as: History of corner, with reference to Vol. and pg., dates, surveyor; exact description of monument replaced; if location computed, by taped or EDM traverse; landowner remarks, etc. (Use reverse side if necessary)

Excavated a 6' strip all the way across the road, at the half way distance between section corners. Also excavated an 8 x 12' area further north opposite evidence of an old tree line to the west. Found a 3/4" x 24" rebar. In the first hole I found a spike at the centerline and a spike/tab at half way and on line between section corners. I monumented the spike found at the centerline because it is very nearly half way, and because it was 33.00' east of a 3/4" iron pipe set in the corner of a relatively new fence. (5- ten. years old) Was unable determine who put pipe there.

SEAL:



DATA SHOWN HERE ON  
CERTIFIED CORRECT:

*Anthony B. Kiedrowski*  
Registered Land Surveyor

DATE: 2/21/80

## TIE SKETCH

Show at least four ties, also fence lines, roads, topo, size 4" BLK OAK and type of witness trees' and if off road - best way to arrive at corner.

