

## PUBLIC LAND SURVEY MONUMENT RECORD

TYPE OF MONUMENT: HARRISON  
ADAMS COUNTY COORDINATES, NAD 83 (2007)

N. 263858.030  
E. 541332.889

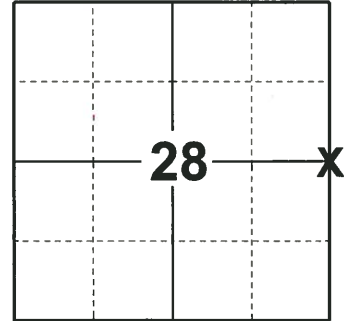
ELEVATION- \_\_\_\_\_ DATUM \_\_\_\_\_

FIELD WORK DATE: 12/14/2018

### BASIS FOR MONUMENT LOCATION

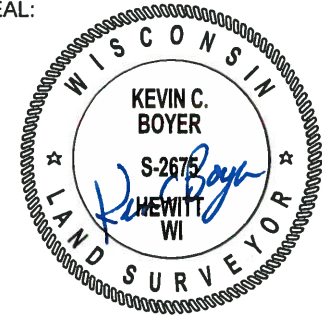
1973 - PLS 878 SET ON A STRAIGHT LINE BUT NOT EQUIDISTANT BETWEEN SECTION CORNERS. COULD NOT JUSTIFY EQUIDISTANCE BECAUSE OF WELL ESTABLISHED POSSESSION LINES AND BECAUSE NO OTHER EVIDENCE OF THE CORNER COULD BE FOUND. SET A HARRISON MONUMENT AND TIED OUT CORNER.

2018 - PLS 2675 FOUND A HARRISON MONUMENT 6" ABOVE THE GROUND SURFACE AND 1 WITNESS TREE. THE MONUMENT AGREES WITH THE EXISTING WITNESS TREE. ACCEPTED THE HARRISON MONUMENT AS THE CORNER LOCATION. SET 4 NEW TIES AND MEASURED TO THE TIES AND WITNESS TREE.



**LOCATION**  
(INDICATE CORNER BY "X")

SEAL:



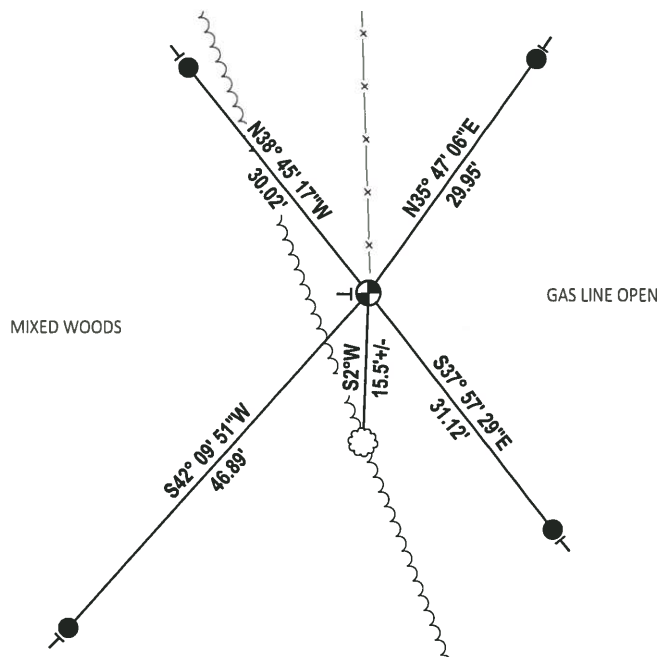
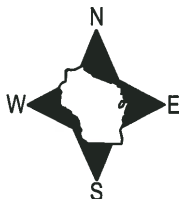
DATA SHOWN HERE ON THIS TIE SHEET IS CORRECT AND COMPLETE TO THE BEST OF MY KNOWLEDGE AND BELIEF.

PROFESSIONAL LAND SURVEYOR

DATE 1-18-19

### - TIE SKETCH -

NOTE: THE CORNER FALLS 1± SOUTH OF THE FENCE CORNER AND 7± EAST OF THE TREE LINE.



- SET 3/4" x 18" IRON REBAR, 1.50#/FT
- ⊕ FOUND HARRISON MONUMENT
- VINYL "T" POST
- ☁ WITNESS TREE

ADAMS COUNTY

Survey Monument Record

TYPE OF MONUMENT: 30" HARRISON

STATE PLANE COORDINATES: N \_\_\_\_\_

E \_\_\_\_\_

ELEVATION — M.S.L. DATUM: \_\_\_\_\_

THETA ANGLE: \_\_\_\_\_

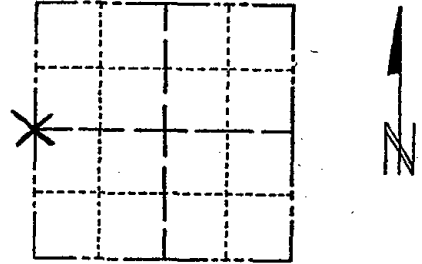
FIELD BOOK: 108 PAGE 96

CORNER NO. 310

SECTION 27

TOWN 19

RANGE 6



LOCATION (Indicated by 'X')

SEAL:

BASIS FOR MONUMENT LOCATION

(Use reverse side if necessary)

Show info such as: History of corner, with reference to Vol. and pg, dates, surveyor; exact description of monument replaced; if location computed, by taped or EDM traverse; landowner remarks, etc.

Set on a straight line but not equidistant between section corners. Could not justify equidistance because of well established possession lines and because no other evidence of the corner could be found.



OK 11-29-78 KN-DA  
3-10-83 GR-SS OK  
2-GONE, 3-NEW TIES 1-8-93 JG-BS  
1-GONE. ALL OK, 2-23-98 -JG  
OK 1-6-03 -JG

CERTIFIED CORRECT:

Anthony B. Kiedrowski  
Registered Land Surveyor

DATE: 9-18-73

TIE SKETCH

(Show at least four ties)

