

30 SECTION 19 TOWN 06 RANGE

ADAMS COUNTY

COUNTY CORNER NO: 102
ROMPORTOL ID: 41906300020

PUBLIC LAND SURVEY MONUMENT RECORD

TYPE OF MONUMENT: HARRISON
ADAMS COUNTY COORDINATES, NAD 83 (2007)

N. 261155.965

E. 528210.335

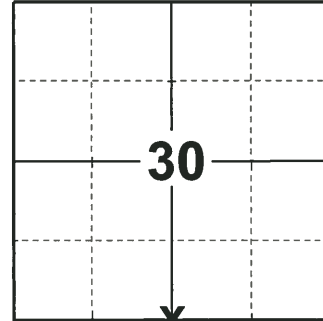
ELEVATION- DATUM

FIELD WORK DATE: 12/17/2018

BASIS FOR MONUMENT LOCATION

1979 - PLS 606 TRAVERSED SECTION 31 USING EDM EQUIPMENT. FOUND A 1" IRON PIPE IN PLACE AT THE CENTERLINE OF BUTTERCUP AVE. AN OLD FENCE LINE IS RUNNING SOUTH FROM THE PIPE LOCATION. PIPE FITS IN WITH LAND BEING DIVIDED IN THE SE1/4 OF SECTION 30. DISTANCE FROM THE NW CORNER TO THE N1/4 CORNER IS WITHIN 3.68 FEET OF THE ORIGINAL GOV'T SURVEY DISTANCE. ACCEPTED AS THE TRUE LOCATION OF SAID CORNER. SET A HARRISON MONUMENT AND TIED OUT.

2018 - PLS 2675 FOUND A MAG NAIL IN THE ROAD SURFACE AND 2 TIES. REMOVED THE MAG NAIL AND FOUND A HARRISON MONUMENT 12" BELOW. THE MONUMENT AGREES WITH THE EXISTING TIES. ACCEPTED THE HARRISON MONUMENT AS THE CORNER LOCATION. SET 2 NEW TIES AND MEASURED TO THE TIES.



LOCATION

(INDICATE CORNER BY "X")

SEAL:



DATA SHOWN HERE ON THIS TIE SHEET IS CORRECT AND COMPLETE TO THE BEST OF MY KNOWLEDGE AND BELIEF.

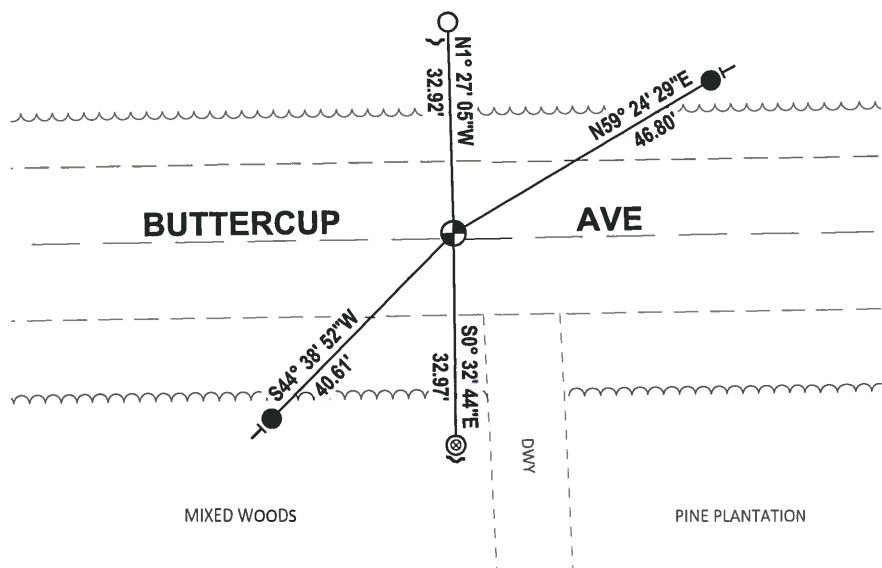
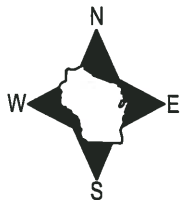
PROFESSIONAL LAND SURVEYOR

DATE 1-18-19

TIE SKETCH

NOTE: THE CORNER FALLS 1'± NORTH OF THE CENTERLINE OF BUTTERCUP AVE.

MIXED WOODS



- SET 3/4" x 18" IRON REBAR, 1.50#/FT
- FOUND 3/4" IRON ROD
- ⊙ FOUND 1-1/2" O.D. IRON PIPE
- ⊕ FOUND HARRISON MONUMENT
- ↘ STEEL FENCE POST
- VINYL "T" POST

ADAMS COUNTY

Survey Monument Record

TYPE OF MONUMENT: 1" Iron Pipe

STATE PLANE COORDINATES: N _____

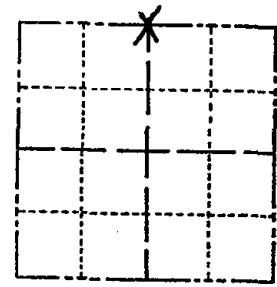
E _____

ELEVATION — M.S.L. DATUM: _____

THETA ANGLE: _____

FIELD BOOK: _____ PAGE _____

CORNER NO. N 1/4¹⁰²
 SECTION 31
 TOWN T19N
 RANGE R 6E



LOCATION
(Indicated by 'X')

SEAL:

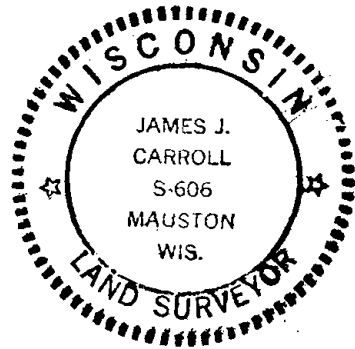
BASIS FOR MONUMENT LOCATION

(Use reverse side if necessary)

Show info such as: History of corner, with reference to Vol. and pg. dates, surveyor; exact description of monument replaced; if location computed, by taped or EDM traverse; landowner remarks, etc.

Traversed Section 31 using EDM equipment. Found 1" iron pipe in place at the center-line of Buttercup Ave. An old fence line is running south from the pipe location. Pipe fits in with land having been divided in the SE 1/4 of Section 30. Distance from the NW corner to the N 1/4 corner is within 3.68 feet of the original Gov't survey distance. Accepted as the true location of said corner.

- 3-11-83 GR-SS OK
- 1-GONE, 2-NEW TIE 1-4-93 JG-B5
- OK, 2-11-98-JG
- OK, 12-12-02-JG
- 12-21-07 JG-SS 4 TIES NE CORNER



CERTIFIED CORRECT:

James J. Carroll
 Registered Land Surveyor
 DATE: May 30, 1979

TIE SKETCH

(Show at least four ties)

