

29
SECTION

19
TOWN

06
RANGE

ADAMS COUNTY

COUNTY CORNER NO: 104

ROMPORTOL ID: 41906290020

PUBLIC LAND SURVEY MONUMENT RECORD

TYPE OF MONUMENT: SURVEY NAIL
ADAMS COUNTY COORDINATES, NAD 83 (2007)

N. 261200.483

E. 533465.565

ELEVATION- - - - DATUM - - - -

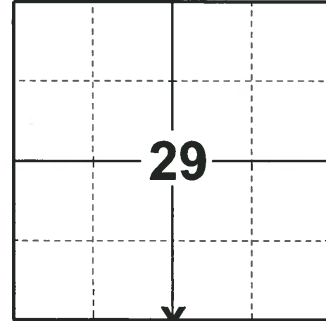
FIELD WORK DATE: 12/17/2018

BASIS FOR MONUMENT LOCATION

1974 - PLS 417 CALCULATED THE CORNER LOCATION ON STRAIGHT LINES AND EQUIDISTANT BETWEEN SECTION CORNERS ON THE BASIS OF COMPUTED COORDINATES. EXISTING SECTION CORNERS PREVIOUSLY SET. PROBED AND DUG IN GENERAL AREA BUT COULD NOT FIND EVIDENCE OF OLD CORNER. SET A 1/2" BOLT ALUMINUM CAP AND TIED OUT.

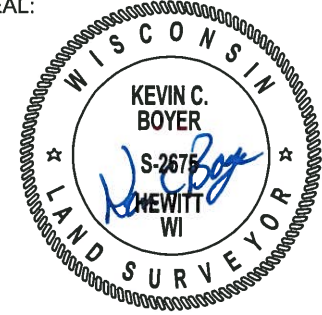
2008 - PLS 1452 FOUND A MAG NAIL ON 9-8-2008, PRIOR TO 2008 RESURFACING PROJECT. SET NEW REFERENCE MONUMENTS (4" ALUMINUM DISKS SET IN CONCRETE) ON 10-2-2008. RE-SET SECTION CORNER ON 11-3-2008 AND MEASURED TIES.

2018 - PLS 2675 FOUND A SURVEY NAIL IN THE ROAD SURFACE AND 4 TIES. REMOVED THE SURVEY NAIL AND FOUND NO OTHER EVIDENCE OF ANY ADDITIONAL MONUMENTATION BELOW. THE CORNER LOCATION AGREES WITH THE EXISTING TIES AND IS ON A NEAR STRAIGHT LINE AND EQUIDISTANT SPLIT BETWEEN THE SE AND SW CORNERS OF SECTION 29. ACCEPTED THE SURVEY NAIL LOCATION AS THE CORNER LOCATION. RE-MEASURED TO THE EXISTING TIES.



LOCATION
(INDICATE CORNER BY "X")

SEAL:



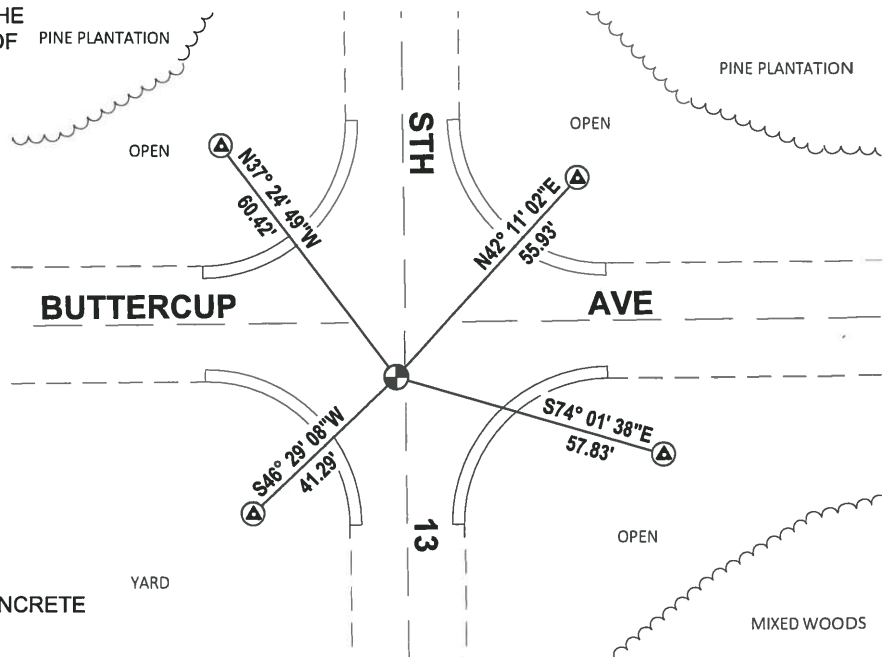
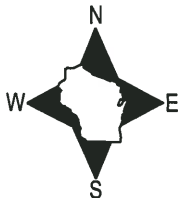
DATA SHOWN HERE ON THIS TIE SHEET IS CORRECT AND COMPLETE TO THE BEST OF MY KNOWLEDGE AND BELIEF.

PROFESSIONAL LAND SURVEYOR

DATE 1-18-19

TIE SKETCH

NOTE: THE CORNER FALLS 2± WEST OF THE CENTERLINE OF STH 13 AND 11± SOUTH OF THE CENTERLINE OF BUTTERCUP AVE.



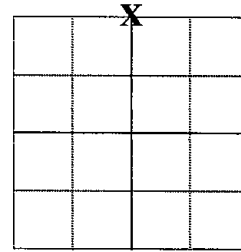
- ⊙ FOUND WISDOT ALUMINUM CAP IN CONCRETE
- FOUND SURVEY NAIL

ADAMS COUNTY

Survey Monument Record

TYPE OF MONUMENT: Berntsen Nail
 STATE PLANE COORDINATES: N _____
 E _____
 ELEVATION — M.S.L. DATUM: _____
 THETA ANGLE: _____
 FIELD BOOK: _____ PAGE _____
 DRAWN BY: D. Christie

CORNER NO. 104
 SECTION 32
 TOWN 19 N
 RANGE 6 E



LOCATION
(Indicated by 'X')

BASIS FOR MONUMENT LOCATION

(Use reverse side if necessary)

Show info such as: History of corner, with reference to Vol. and pg. dates, surveyor; exact description of monument replaced; if location computed, by taped or EDM traverse; landowner remarks, etc.

SEAL:



Found "Mag" nail on 9-8-2008, prior to 2008 Resurfacing Project. Set new reference monuments (4" Alum. Disks set in concrete) on 10-2-2008. Re-set section corner on 11-3-2008 and measured Ties.

SEE R.K. SAYER TIE SHEET 9-6-74

CERTIFIED CORRECT

Dennis J. Christie
 Registered Land Surveyor

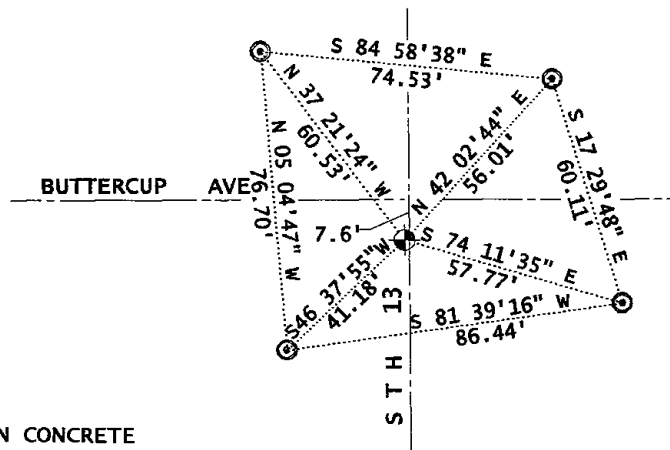
Date: 12-12-2008

TIE SKETCH

(Show at least four ties)



- BERNTSEN NAIL
- 4" ALUM DISK IN CONCRETE



ADAMS COUNTY

CORNER NO. 499
SECTION 32
TOWN 19N
RANGE 6E

Survey Monument Record

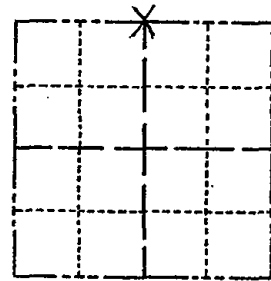
TYPE OF MONUMENT: 1/2" BOLT ALUMINUM CAP

STATE PLANE COORDINATES: N _____
E _____

ELEVATION — M.S.L. DATUM: _____

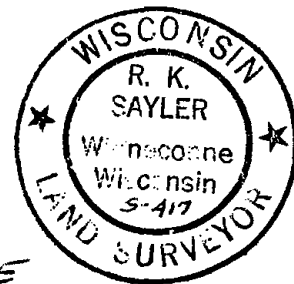
THETA ANGLE: _____

FIELD BOOK: 28 PAGE 86



LOCATION
(Indicated by 'X')

SEAL:



SEE UPDATE
12-12-08 DENNIS CHRISTIE

BASIS FOR MONUMENT LOCATION

(Use reverse side if necessary)

Show info such as: History of corner, with reference to Vol. and pg, dates, surveyor; exact description of monument replaced; if location computed, by taped or EDM traverse; landowner remarks, etc.

Set on straight lines equidistant between Section corners on the basis of computed coordinates. Existing Section corners previously set.

Probed and dug in general area but could not find evidence of old corner.

CERTIFIED CORRECT:

R. K. Saylor
Registered Land Surveyor
DATE: September 6, 1974

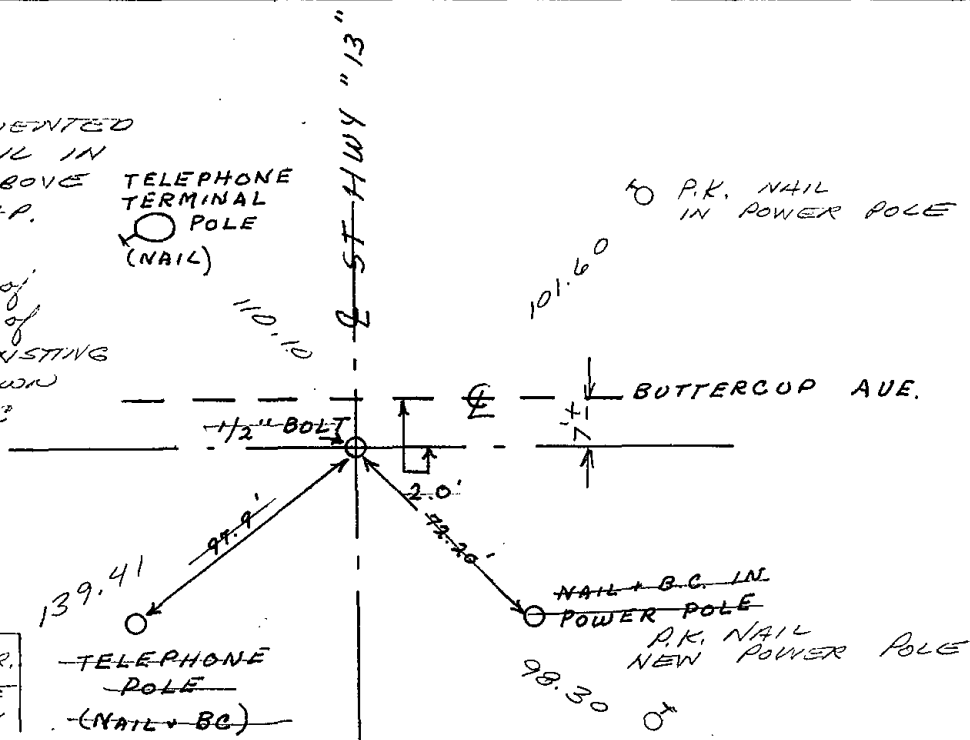
- OK 11-29-78 RN-DA
- 3-11-83 GR-SS OK
- NEW TIES 8-5-97 JB-SS
- OK 2-11-98-JG
- OK 5-19-03 JG-SS
- OK-11-14-07-JG-JS

TIE SKETCH

(Show at least four ties)

CORNER MONUMENTED WITH "MAG" NAIL IN BITUMINOUS ABOVE ALUMINUM CAP.

NAIL IS ±2' W. of E "13" & ±7' S. of E BUTTERCUP, EXISTING P.K. NAIL, UNKNOWN ORIGIN, AT E-E 6.63' FROM MAG NAIL SET



NORTHWEST COR. OF CONCRETE PATIO @ CABIN

TELEPHONE POLE (NAIL + BC)