

31
SECTION

19
TOWN

06
RANGE

ADAMS COUNTY

COUNTY CORNER NO: 115

ROMPORTOL ID: 41906312000

PUBLIC LAND SURVEY MONUMENT RECORD

TYPE OF MONUMENT: HARRISON

ADAMS COUNTY COORDINATES, NAD 83 (2007)

N. 258542.767

E. 530870.521

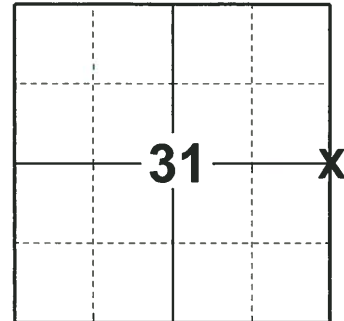
ELEVATION- - - - - DATUM - - - - -

FIELD WORK DATE: 12/17/2018

BASIS FOR MONUMENT LOCATION

1974 - PLS 417 CALCULATED THE CORNER LOCATION ON STRAIGHT LINES EQUIDISTANT BETWEEN PREVIOUSLY SET SECTION CORNERS. PROBED AND DUG IN THE GENERAL AREA AND FOUND NO EVIDENCE OF THE OLD CORNER. SET A HARRISON MONUMENT AT THE CALCULATED LOCATION AND TIED OUT.

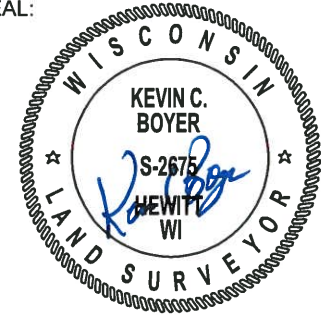
2018 - PLS 2675 FOUND A HARRISON MONUMENT FLUSH WITH THE GROUND SURFACE AND 2 WITNESSES. THE MONUMENT AGREES WITH THE EXISTING WITNESSES. ACCEPTED THE HARRISON MONUMENT AS THE CORNER LOCATION. SET 4 NEW TIES AND MEASURED TO THE TIES AND WITNESSES.



LOCATION

(INDICATE CORNER BY "X")

SEAL:



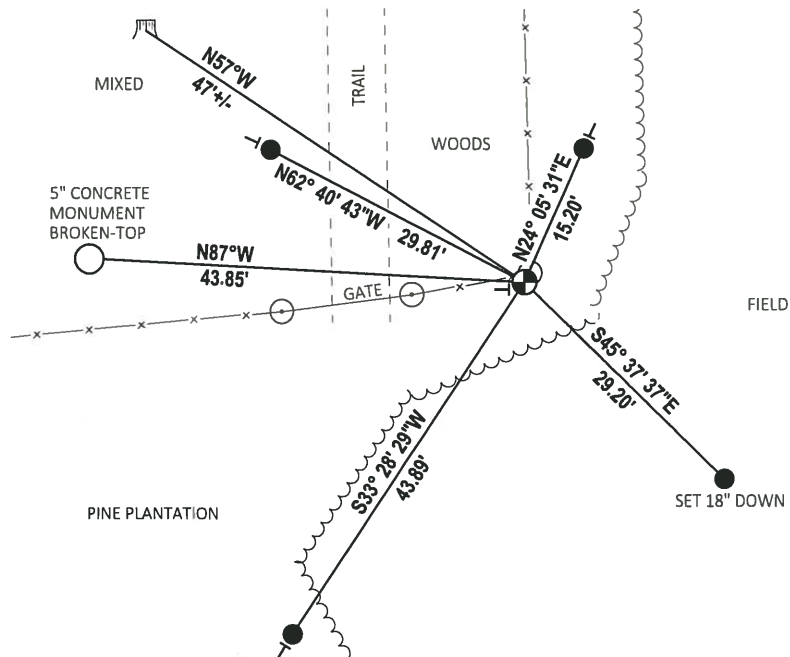
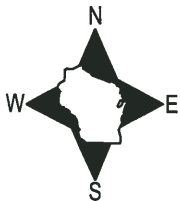
DATA SHOWN HERE ON THIS TIE SHEET IS CORRECT AND COMPLETE TO THE BEST OF MY KNOWLEDGE AND BELIEF.

PROFESSIONAL LAND SURVEYOR

DATE 1-18-19

- TIE SKETCH

NOTE: THE CORNER FALLS 1'± SOUTH OF THE FENCE.



- SET 3/4" x 18" IRON REBAR, 1.50#/FT
- ⊕ FOUND HARRISON MONUMENT
- VINYL "T" POST
- ▣ WITNESS TREE STUMP

ADAMS COUNTY

Survey Monument Record

TYPE OF MONUMENT: HARRISON

STATE PLANE COORDINATES: N _____

E _____

ELEVATION — M.S.L. DATUM: _____

THETA ANGLE: _____

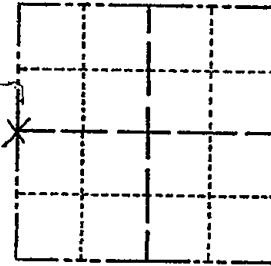
FIELD BOOK: 28 PAGE 86

CORNER NO. 500

SECTION 32

TOWN 19 N

RANGE 6 E



LOCATION
(Indicated by 'X')

SEAL:



BASIS FOR MONUMENT LOCATION

(Use reverse side if necessary)

Show info such as: History of corner, with reference to Vol. and pg, dates, surveyor; exact description of monument replaced; if location computed, by taped or EDM traverse; landowner remarks, etc.

Set on straight lines
equidistant between
previously set section corners.
Probed and dug in general area,
could not find evidence of old corner.

OK 11-29-78 RU-DA
3-29-83 GR-SS 1 NEW TIE
ALL OK, 2-23-98-JG
1-NEW, MON. OK 12-12-02-JG
OK, 12-21-07-JG

CERTIFIED CORRECT:

R. K. Saylor
Registered Land Surveyor

DATE: September 6, 1994

TIE SKETCH

(Show at least four ties)

