

34
SECTION

19
TOWN

06
RANGE

ADAMS COUNTY

COUNTY CORNER NO: 118

ROMPORTOL ID: 41906342000

PUBLIC LAND SURVEY MONUMENT RECORD

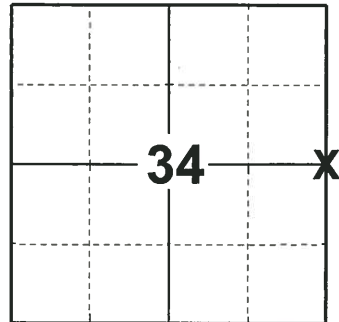
TYPE OF MONUMENT: HARRISON (BROKEN-TOP)
ADAMS COUNTY COORDINATES, NAD 83 (2007)

N. 258582.216

E. 546635.902

ELEVATION- _____ DATUM _____

FIELD WORK DATE: 12/17/2018



LOCATION

(INDICATE CORNER BY "X")

SEAL:

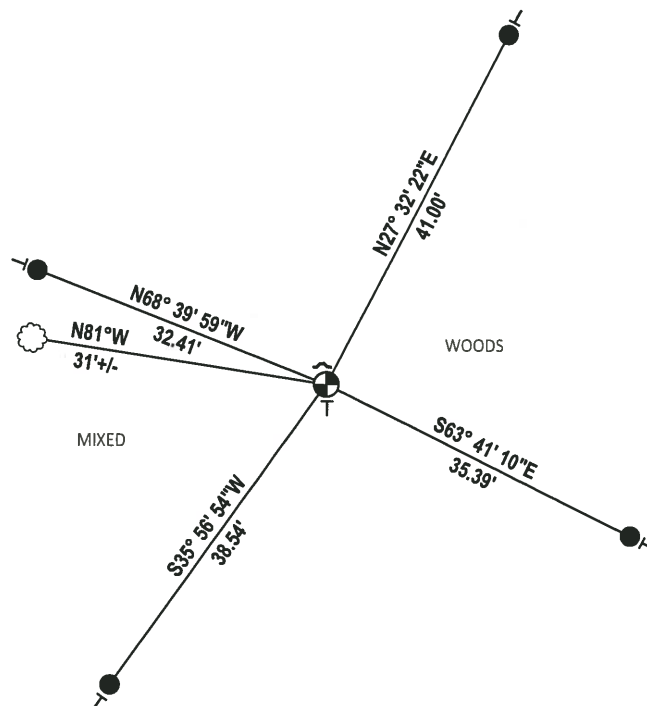
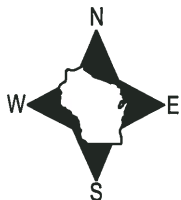


DATA SHOWN HERE ON THIS TIE SHEET IS CORRECT AND COMPLETE TO THE BEST OF MY KNOWLEDGE AND BELIEF.

PROFESSIONAL LAND SURVEYOR

DATE 1-18-19

- TIE SKETCH -



- SET 3/4" x 18" IRON REBAR, 1.50#/FT
- ⊕ FOUND HARRISON MONUMENT (BROKEN-TOP)
- ┘ STEEL FENCE POST
- └ VINYL "T" POST
- ☼ WITNESS TREE

ADAMS COUNTY

Survey Monument Record

TYPE OF MONUMENT: 30" HARRISON

STATE PLANE COORDINATES: N _____
E _____

ELEVATION — M.S.L. DATUM: _____

THETA ANGLE: _____

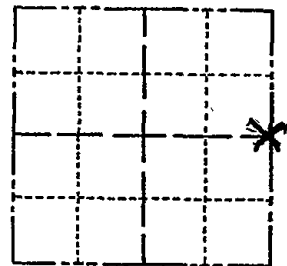
FIELD BOOK: 108 PAGE 77

CORNER NO. 301

SECTION 34

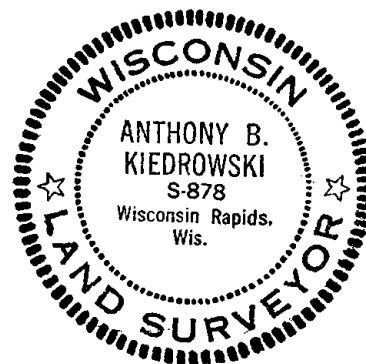
TOWN 19

RANGE 6



LOCATION
(Indicated by 'X')

SEAL:



BASIS FOR MONUMENT LOCATION

(Use reverse side if necessary)

Show info such as: History of corner, with reference to Vol. and pg. dates, surveyor; exact description of monument replaced; if location computed, by taped or EDM traverse; landowner remarks, etc.

Set on a straight line equidistant between section corners.

OK 4-18-83 GR-55

OK 1-8-93 JG-BS

ALL OK, 2-23-78-JG

TOP BROKEN 2 NEW TIES 12-17-07 SS

CERTIFIED CORRECT:

Anthony B. Kiedrowski
Registered Land Surveyor

DATE: 9/18/73

TIE SKETCH

(Show at least four ties)

