

35  
SECTION

19  
TOWN

06  
RANGE

# ADAMS COUNTY

COUNTY CORNER NO: 119

ROMPORTOL ID: 41906352000

## PUBLIC LAND SURVEY MONUMENT RECORD

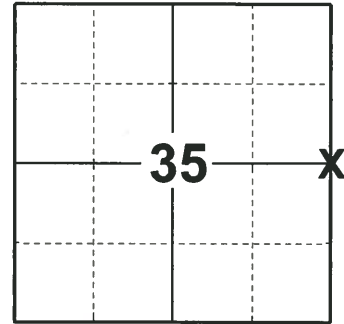
TYPE OF MONUMENT: 2-3/8" O.D. IRON PIPE  
ADAMS COUNTY COORDINATES, NAD 83 (2007)

N. 258604.405

E. 551886.348

ELEVATION- \_\_\_\_\_ DATUM \_\_\_\_\_

FIELD WORK DATE: 12/18/2018



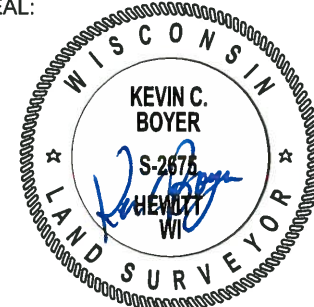
**LOCATION**  
(INDICATE CORNER BY "X")

### BASIS FOR MONUMENT LOCATION

1977 - PLS 1323 FOUND NO EVIDENCE OF THE ORIGINAL GOVERNMENT CORNER OR ANY SUBSEQUENT MONUMENTATION. CALCULATED THE CORNER LOCATION ON A STRAIGHT LINE EQUIDISTANT BETWEEN SECTION CORNERS NORTH AND SOUTH. SET A 2-1/2" X 7' PIPE OUT IN THE MARSH AND TIED OUT. PLS 1323 FELT THIS WOULD BE A BETTER MONUMENT THAN A HARRISON IN THIS TYPE OF TERRAIN.

2018 - PLS 2675 FOUND A 2-3/8" O.D. IRON PIPE 36" ABOVE THE WATER LINE AND 1 WITNESS TREE. THE MONUMENT AGREES WITH THE EXISTING WITNESS TREE. ACCEPTED THE 2-3/8" O.D. IRON PIPE AS THE CORNER LOCATION. SET 4 NEW TIES AND MEASURED TO THE TIES AND WITNESS TREE.

SEAL:



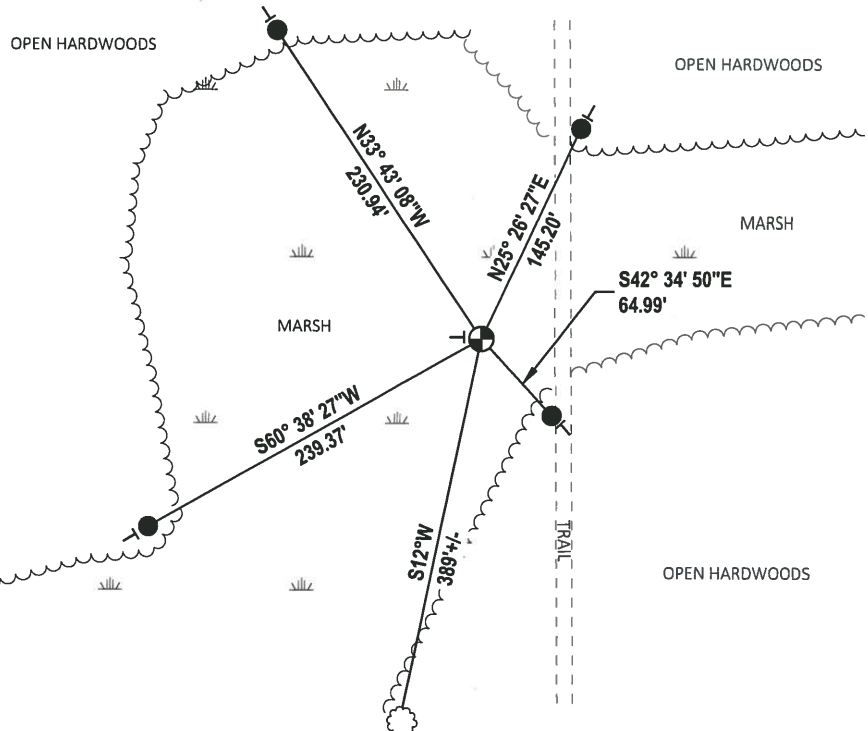
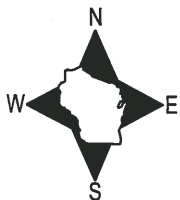
DATA SHOWN HERE ON THIS TIE SHEET IS CORRECT AND COMPLETE TO THE BEST OF MY KNOWLEDGE AND BELIEF.

PROFESSIONAL LAND SURVEYOR

DATE 1-18-19

### TIE SKETCH

NOTE: THE CORNER FALLS 51'± WEST OF THE CENTERLINE OF THE TRAIL.



- SET 3/4" x 18" IRON REBAR, 1.50#/FT
- ⊕ FOUND 2-3/8" O.D. IRON PIPE
- VINYL "T" POST
- ☼ WITNESS TREE

ADAMS COUNTY

Survey Monument Record

TYPE OF MONUMENT: 2 1/2" x 7' Pipe

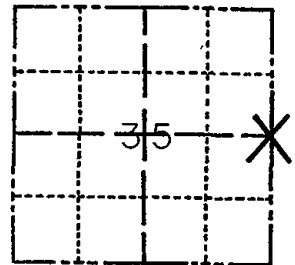
STATE PLANE COORDINATES: N \_\_\_\_\_ E \_\_\_\_\_

ELEVATION — M.S.L. DATUM: \_\_\_\_\_

THETA ANGLE: \_\_\_\_\_

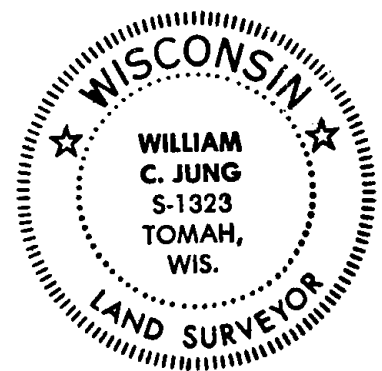
FIELD BOOK: \_\_\_\_\_ PAGE \_\_\_\_\_

CORNER NO. 119  
SECTION 35  
TOWN 19N  
RANGE 6E



LOCATION (Indicated by 'X')

SEAL:



BASIS FOR MONUMENT LOCATION

(Use reverse side if necessary)

Show info such as: History of corner, with reference to Vol. and pg, dates, surveyor; exact description of monument replaced; if location computed, by taped or EDM traverse; landowner remarks, etc.

Set the corner on a straight line equidistant between the section corners North and South.

Set a 2 1/2" x 7' pipe out in the marsh. I felt this would be a better monument than a Harrison in this type of terrain.

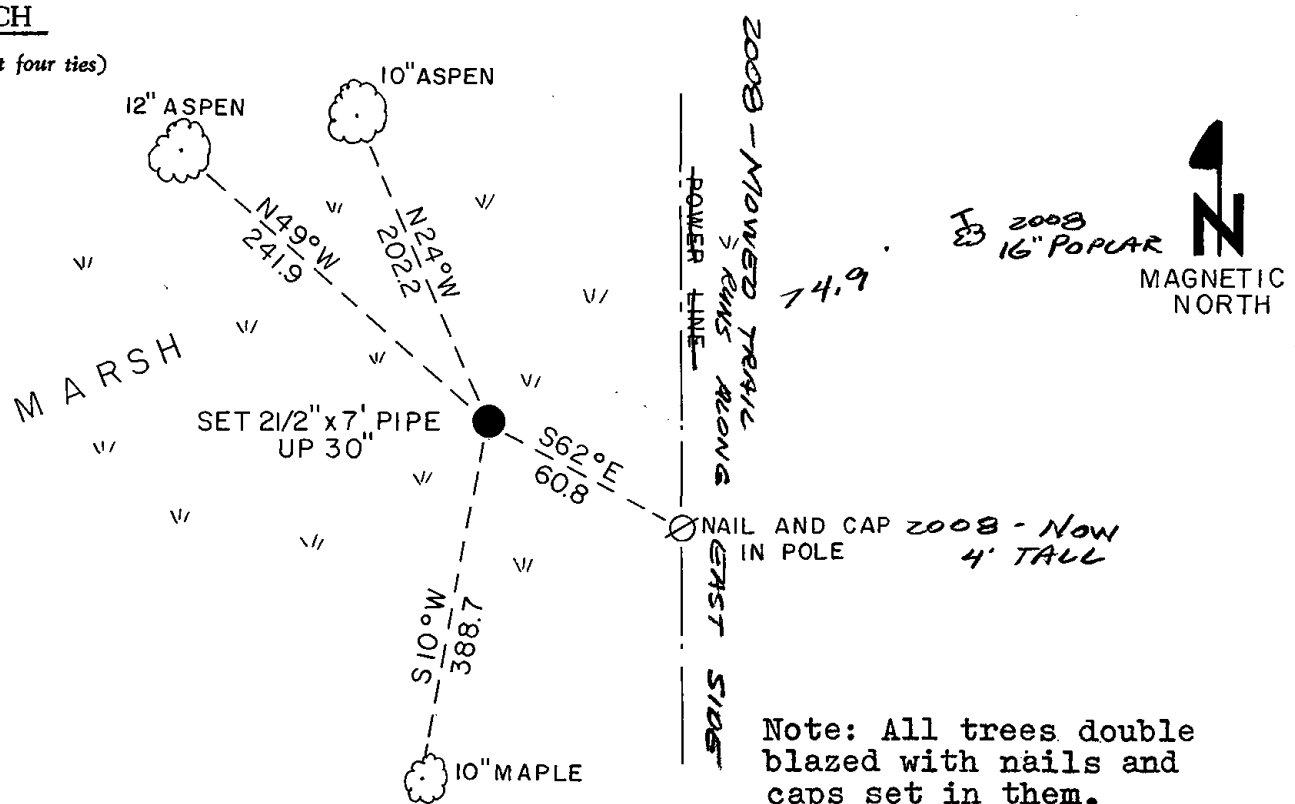
Found no evidence of the original government corner or any subsequent monumentation.

- ASSUMED OK - MARSH FULL OF WATER 11-29-78 RN-DA
- OK 4-21-83 GR-SS
- OK 1-8-93 JG-B5
- OK 4-24-98 JC-SS
- NOV '08 1 NEW TIE SJS

CERTIFIED CORRECT:  
*William C. Jung*  
Registered Land Surveyor  
DATE: September 29, 1977

TIE SKETCH

(Show at least four ties)



Note: All trees double blazed with nails and caps set in them.