

34 SECTION    19 TOWN    06 RANGE

# ADAMS COUNTY

COUNTY CORNER NO: 128

ROMPORTOL ID: 41906340020

## PUBLIC LAND SURVEY MONUMENT RECORD

TYPE OF MONUMENT: HARRISON  
ADAMS COUNTY COORDINATES, NAD 83 (2007)

N. 255954.077

E. 543992.817

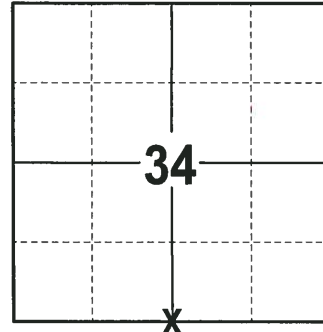
ELEVATION-      DATUM     

FIELD WORK DATE: 01/22/2018

### BASIS FOR MONUMENT LOCATION

1973 - PLS 878 CALCULATED LOCATION ON A STRAIGHT LINE EQUIDISTANT BETWEEN SECTION CORNERS. COULD NOT FIND ANY EVIDENCE AT CALCULATED LOCATION. SET A HARRISON MONUMENT AT THE CALCULATED LOCATION AND TIED OUT.

2018 - PLS 2994 FOUND A HARRISON MONUMENT 6" BELOW THE GROUND SURFACE, 2 TIES AND 1 WITNESS. THE MONUMENT AGREES WITH THE EXISTING TIES AND WITNESS. ACCEPTED THE HARRISON MONUMENT AS THE CORNER LOCATION. SET 2 NEW TIES AND MEASURED TO THE TIES AND WITNESS.



**LOCATION**  
(INDICATE CORNER BY "X")

SEAL:



DATA SHOWN HERE ON THIS TIE SHEET IS CORRECT AND COMPLETE TO THE BEST OF MY KNOWLEDGE AND BELIEF.

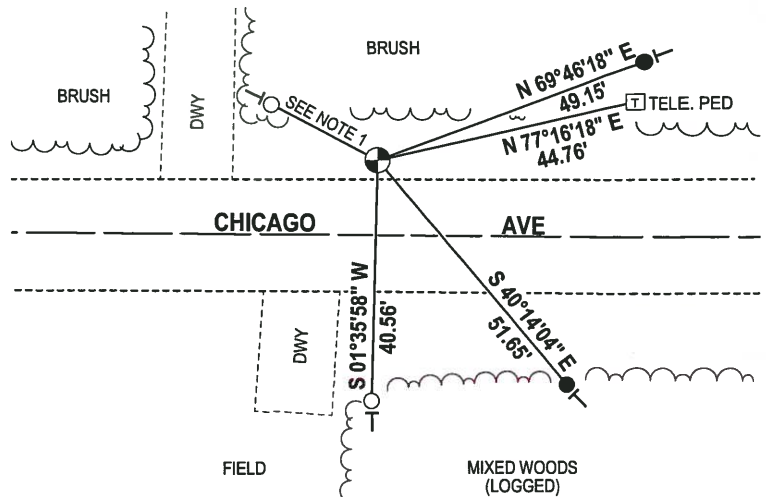
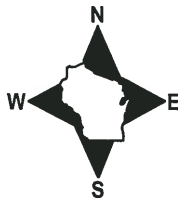
PROFESSIONAL LAND SURVEYOR

DATE 3-1-18

### - TIE SKETCH -

NOTE 1: THE 3/4" IRON ROD FALLS N 62°27'29" W, 15.97' OF THE CORNER LOCATION.

NOTE 2: THE CORNER FALLS 16± NORTH OF THE CENTERLINE OF CHICAGO AVE.



- 3/4" x 18" IRON REBAR SET, 1.50#/FT
- 3/4" IRON ROD FOUND
- ⊕ HARRISON FOUND
- VINYL "T" POST

# U.S. PUBLIC LAND SURVEY MONUMENT RECORD

## ADAMS COUNTY

TYPE OF MONUMENT: HARRISON

STATE PLANE COORDINATES: N \_\_\_\_\_  
E \_\_\_\_\_

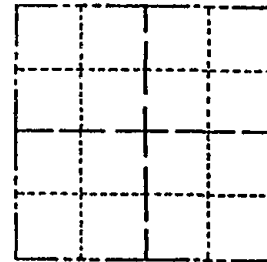
ELEVATION — M.S.L. DATUM: \_\_\_\_\_

THETA ANGLE: \_\_\_\_\_

FIELD BOOK: \_\_\_\_\_ PAGE \_\_\_\_\_

DRAWN BY: \_\_\_\_\_

CORNER NO. 128  
SECTION 34  
TOWN 19  
RANGE 6



LOCATION  
(Indicated by 'X')

### BASIS FOR MONUMENT LOCATION

Show info such as: History of corner, with reference to Vol. and pg., dates, surveyor; exact description of monument replaced; if location computed, by taped or EDM traverse; landowner remarks, etc. (Use reverse side if necessary)  
(in conformance with Section A-E 502 of the Wisconsin Administrative Code)

*FIRE HAS DESTROYED TREES - TIE SHEET  
REDRAWN NOV. 2008  
SEE TIE SHEET BY A. KIEDROWSKI  
DATED 9-18-73*

SEAL: \_\_\_\_\_

DATA SHOWN HERE ON  
CERTIFIED CORRECT:

Registered Land Surveyor

DATE: \_\_\_\_\_

### TIE SKETCH

Show at least four ties, also fence lines, roads, topo, size and type of witness trees and if off road - best way to arrive at corner.

*3/4" Rod/Post SET  
'08  
± 24' NORTH  
OF E*

*TWIN 6" JACK  
PINE, DEAD  
BUT STANDING  
'08*

*WEST SIDE OF  
CHANNEL IRON BRACE  
AT TELEPHONE BOX*

*44.85' U*

*16.00'*

*± 12 1/2'*

*CHICAGO  
AVE*

*40.51'*

*3/4" Rod/Post SET*

### MAINTENANCE RECORD

Date	Init.	Remarks
Nov '08	SS	

*CORNER ESTIMATED  
290' WEST OF PIPELINE*

# ADAMS COUNTY

## Survey Monument Record

TYPE OF MONUMENT: 30" HARRISON

STATE PLANE COORDINATES: N \_\_\_\_\_

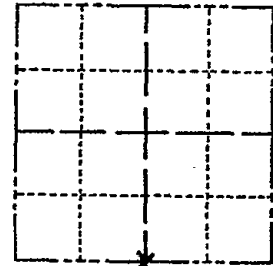
E \_\_\_\_\_

ELEVATION — M.S.L. DATUM: \_\_\_\_\_

THETA ANGLE: \_\_\_\_\_

FIELD BOOK: 108 PAGE 76

CORNER NO. 298  
 SECTION 34  
 TOWN 19  
 RANGE 6



LOCATION  
(Indicated by 'X')

SEAL:

### BASIS FOR MONUMENT LOCATION

(Use reverse side if necessary)

Show info such as: History of corner, with reference to Vol. and pg. dates, surveyor; exact description of monument replaced; if location computed, by taped or EDM traverse; landowner remarks, etc.

Set on straight line equidistant between section corners. Could find no other evidence.



OK 11-22-78 RN-SS  
 3-8-83 GR-SS Z NEW TIES  
 4-TIES GONE, 3-NEW TIES, MON. OK 8-18-92-56  
 ALL OK, 2-23-98-56  
 OK, 1-02-03-56

CERTIFIED CORRECT:

*Anthony B. Kiedrowski*  
 Registered Land Surveyor

DATE: 9/18/73

### TIE SKETCH

(Show at least four ties)

