

34 SECTION 19 TOWN 06 RANGE

ADAMS COUNTY

COUNTY CORNER NO: 129

ROMPORTOL ID: 41906340000

PUBLIC LAND SURVEY MONUMENT RECORD

TYPE OF MONUMENT: HARRISON (BROKEN-TOP)
 ADAMS COUNTY COORDINATES, NAD 83 (2007)

N. 255958.449

E. 546630.398

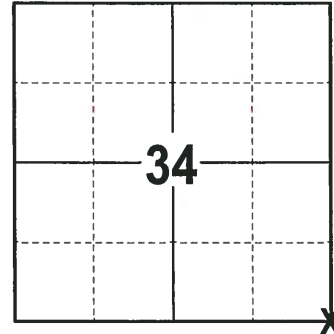
ELEVATION- DATUM

FIELD WORK DATE: 01/22/2018

BASIS FOR MONUMENT LOCATION

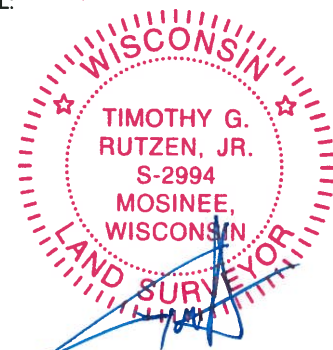
1973 - PLS 878 CALCULATED LOCATION BY COMPUTED COORDINATES FROM A TRAVERSE OF THE ENTIRE SECTION 34 AND PART OF SECTION 35. NO EVIDENCE FOUND OF ANY REMONUMENTATION. SET A HARRISON MONUMENT AT THE CORNER LOCATION AND TIED OUT.

2018 - PLS 2994 FOUND A HARRISON MONUMENT WITH A BROKEN-TOP 6" BELOW THE GROUND SURFACE AND 3 WITNESS TREES. THE MONUMENT AGREES WITH THE EXISTING WITNESS TREES. ACCEPTED THE HARRISON MONUMENT WITH A BROKEN-TOP AS THE CORNER LOCATION. SET 4 NEW TIES AND MEASURED TO THE TIES AND WITNESS TREES.



LOCATION
(INDICATE CORNER BY "X")

SEAL:



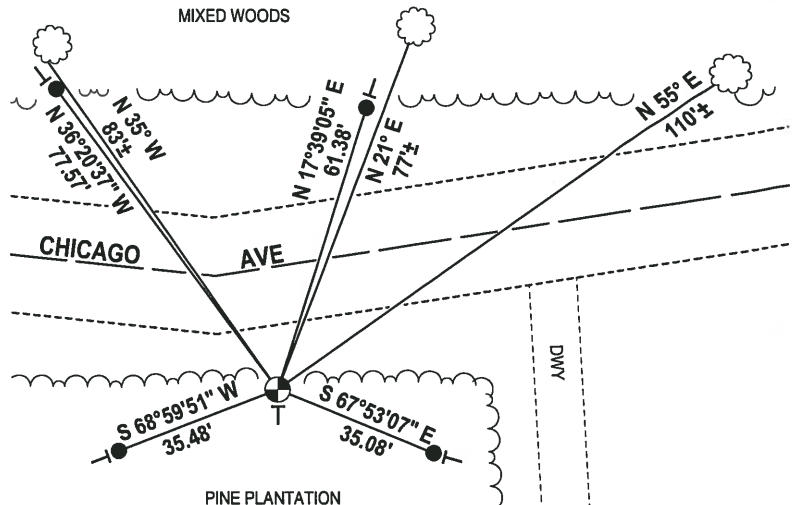
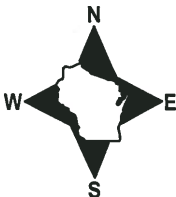
DATA SHOWN HERE ON THIS TIE SHEET IS CORRECT AND COMPLETE TO THE BEST OF MY KNOWLEDGE AND BELIEF.

PROFESSIONAL LAND SURVEYOR

DATE 3-1-18

- TIE SKETCH

NOTE: THE CORNER FALLS 25± SOUTH OF THE CENTERLINE OF CHICAGO AVE.

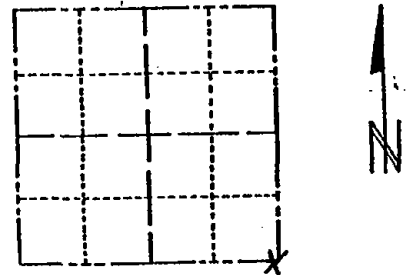


- 3/4" x 18" IRON REBAR SET, 1.50#/FT
- ⊕ HARRISON (BROKEN-TOP) FOUND
- ┆ VINYL "T" POST
- ☼ WITNESS TREE FOUND

ADAMS COUNTY Survey Monument Record

CORNER NO. 299
SECTION 34
TOWN 19
RANGE 6

TYPE OF MONUMENT: 30" HARRISON
STATE PLANE COORDINATES: N _____
E _____
ELEVATION — M.S.L. DATUM: _____
THETA ANGLE: _____
FIELD BOOK: 108 PAGE 76



LOCATION
(Indicated by 'X')

SEAL:



BASIS FOR MONUMENT LOCATION

(Use reverse side if necessary)

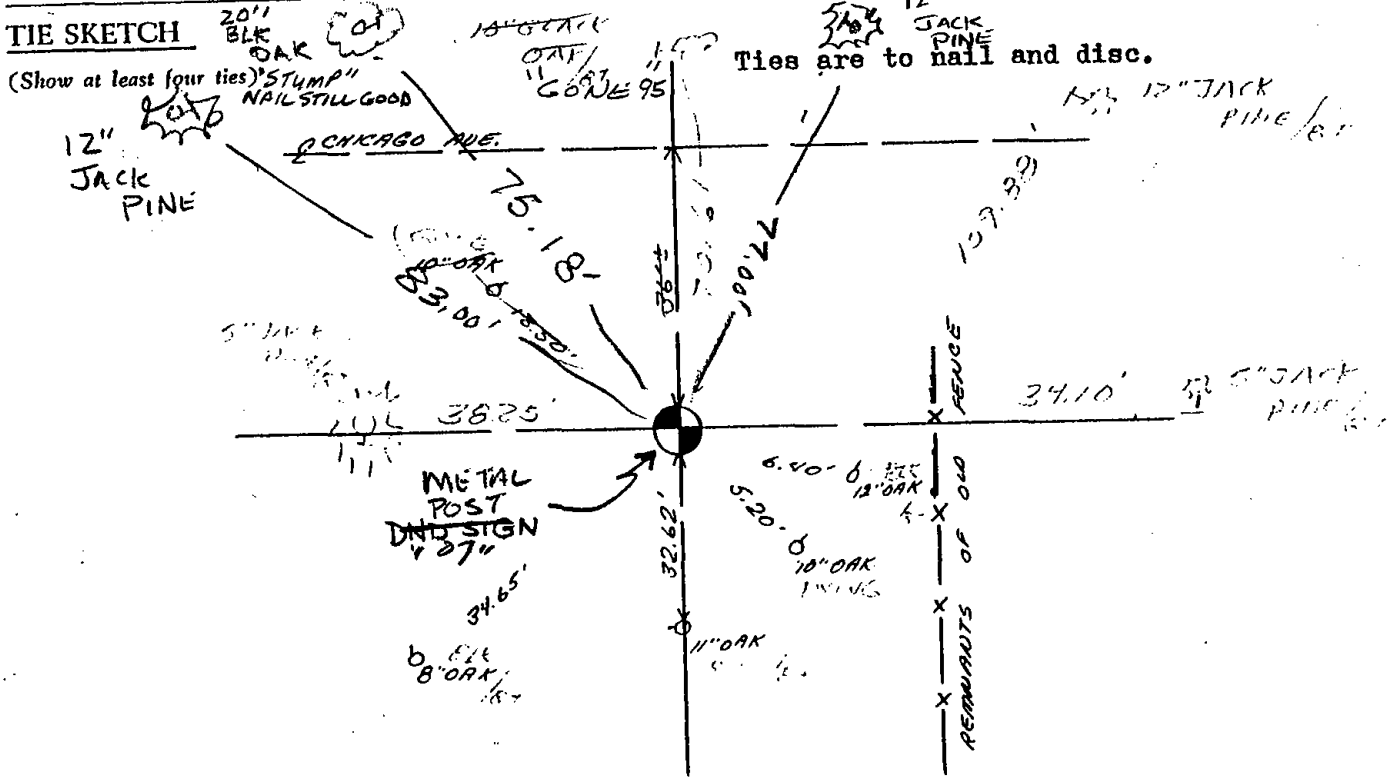
Show info such as: History of corner, with reference to Vol. and pg, dates, surveyor; exact description of monument replaced; if location computed, by taped or EDM traverse; landowner remarks, etc.

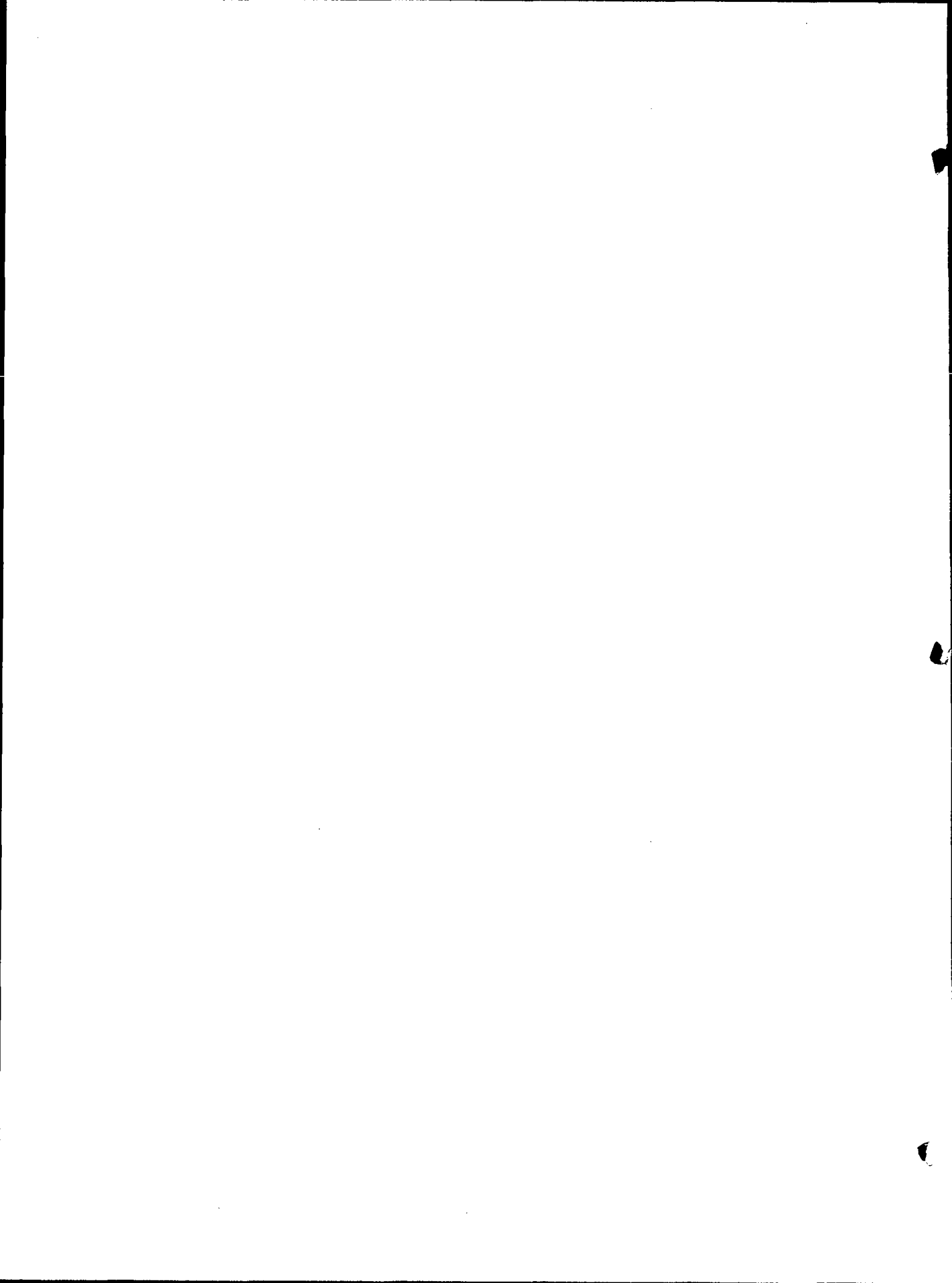
Set by computed coords from traverse of entire section 34 and part of section 35. No evidence of any mark.

OK 1122 19 1122 19
4 21 83 GR-SS 3 NEW TIES
1-GONE, 3-NEW TIES TOP BROKEN OFF
MONUMENT. 4-5-95 JG-CR
ALL OK, 2-23-98-JG
OK, 1-02-03-JG OK, 12-17-02-JL-SS

CERTIFIED CORRECT:

Anthony B. Kiedrowski
Registered Land Surveyor
DATE: 9/18/73





ADAMS COUNTY

CORNER NO. 299
 SECTION 34
 TOWN 19
 RANGE 6

Survey Monument Record

TYPE OF MONUMENT: 30" HARRISON

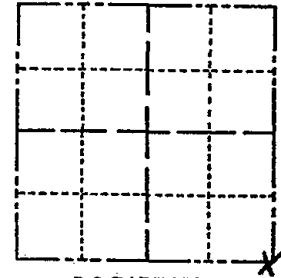
STATE PLANE COORDINATES: N _____

E _____

ELEVATION — M.S.L. DATUM: _____

THETA ANGLE: _____

FIELD BOOK: 108 PAGE 76



LOCATION
(Indicated by 'X')

SEAL:



BASIS FOR MONUMENT LOCATION

(Use reverse side if necessary)

Show info such as: History of corner, with reference to Vol. and pg, dates, surveyor; exact description of monument replaced; if location computed, by taped or EDM traverse; landowner remarks, etc.

Set by computed coords from traverse of entire section 34 and part of section 35. No evidence of any mark.

OK 11-22-78 RN-SS
 4-21-83 GR-SS 3 NEW TIES

CERTIFIED CORRECT:

Anthony B. Kiedrowski
 Registered Land Surveyor
 DATE: 9/18/73

TIE SKETCH

(Show at least four ties)

