

35 SECTION 19 TOWN 06 RANGE

ADAMS COUNTY

COUNTY CORNER NO: 130

ROMPORTOL ID: 41906350020

PUBLIC LAND SURVEY MONUMENT RECORD

TYPE OF MONUMENT: HARRISON (BROKEN-TOP)
ADAMS COUNTY COORDINATES, NAD 83 (2007)

N. 255962.546

E. 549267.919

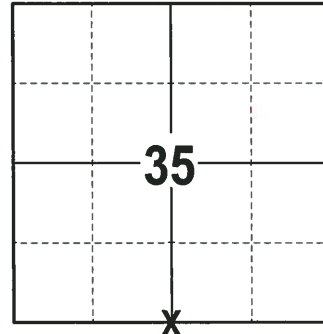
ELEVATION- DATUM

FIELD WORK DATE: 01/22/2018

BASIS FOR MONUMENT LOCATION

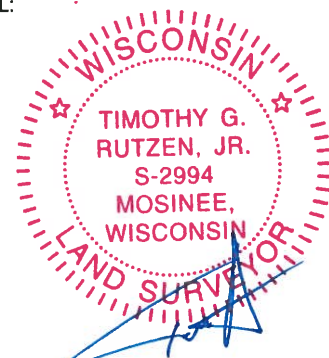
1971 - 981 SET A 30" HARRISON MONUMENT AT THE CORNER LOCATION AND TIED OUT.

2018 - PLS 2994 FOUND A HARRISON MONUMENT WITH A BROKEN-TOP 12" BELOW THE ROAD SURFACE AND 2 TIES. THE MONUMENT AGREES WITH 1 OF THE EXISTING TIES. ACCEPTED THE HARRISON MONUMENT WITH A BROKEN-TOP AS THE CORNER LOCATION. SET 2 NEW TIES AND MEASURED TO THE TIES.



LOCATION
(INDICATE CORNER BY "X")

SEAL:



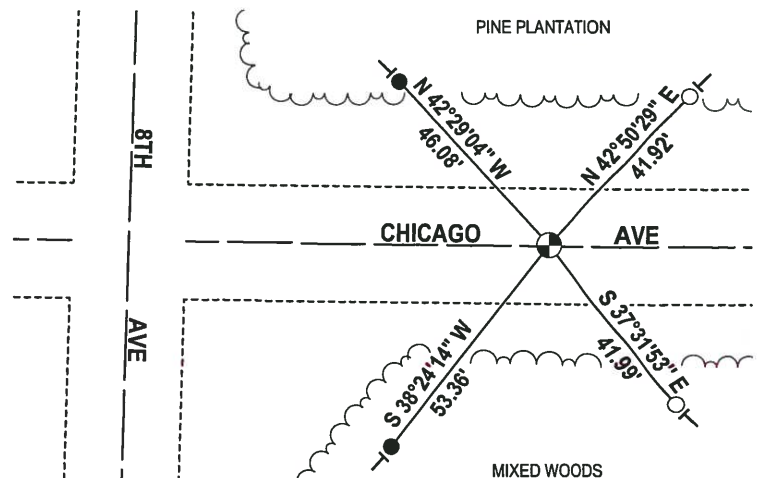
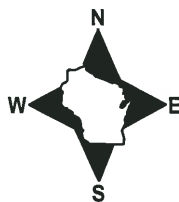
DATA SHOWN HERE ON THIS TIE SHEET IS CORRECT AND COMPLETE TO THE BEST OF MY KNOWLEDGE AND BELIEF.

PROFESSIONAL LAND SURVEYOR

DATE 3-1-19

- TIE SKETCH

NOTE: THE CORNER FALLS 88± EAST OF THE CENTERLINE OF 8TH AVE.



- 3/4" x 18" IRON REBAR SET, 1.50#/FT
- ALUMINUM CAP IN CONCRETE FOUND
- ⊕ HARRISON (BROKEN-TOP) FOUND
- VINYL "T" POST

ADAMS COUNTY

Survey Monument Record

TYPE OF MONUMENT: 30" HARRISON

STATE PLANE COORDINATES: N. _____

E. _____

ELEVATION — M.S.L. DATUM: _____

THETA ANGLE: _____

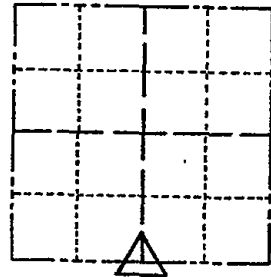
FIELD BOOK: 104 PAGE 92

CORNER NO. 63

SECTION 35

TOWN 19

RANGE 6



BASIS FOR MONUMENT LOCATION

(Use reverse side if necessary)

Show info such as: History of corner, with reference to Vol. and pg, dates, surveyor; exact description of monument replaced; if location computed, by taped or EDM traverse; landowner remarks, etc.

SEAL:

LOCATION
(Indicated by 'X')

Set monument

November 16, 1971

Sam T. Mullen R.L.S. S-981

OK 1-02-78 RN-SS
 3-10-83 GR-SS
 OK 8-18-92 JG
 ALL OK, 2-23-98-JG
 OK, 1-02-03-JG
 1-GONE, 12-17-07-JG-SS

CERTIFIED CORRECT:

Registered Land Surveyor

DATE: _____

TIE SKETCH

(Show at least four ties)

