

31 SECTION 20 TOWN 07 RANGE

# ADAMS COUNTY

COUNTY CORNER NO: 123  
ROMPORTOL ID: 42007310000

## PUBLIC LAND SURVEY MONUMENT RECORD

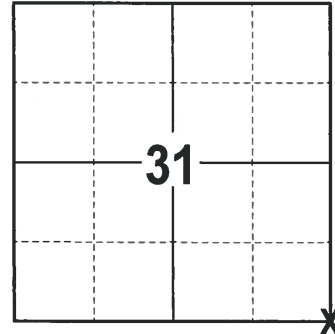
TYPE OF MONUMENT: HARRISON  
ADAMS COUNTY COORDINATES, NAD 83 (2007)

N. 287804.432

E. 562162.582

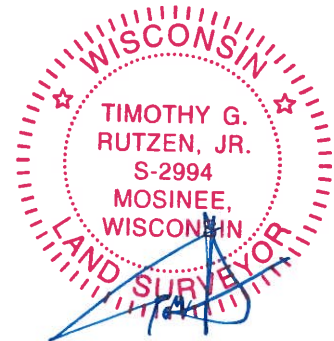
ELEVATION-      DATUM     

FIELD WORK DATE: 02/01/2018



**LOCATION**  
(INDICATE CORNER BY "X")

SEAL:



DATA SHOWN HERE ON THIS TIE SHEET IS CORRECT AND COMPLETE TO THE BEST OF MY KNOWLEDGE AND BELIEF.

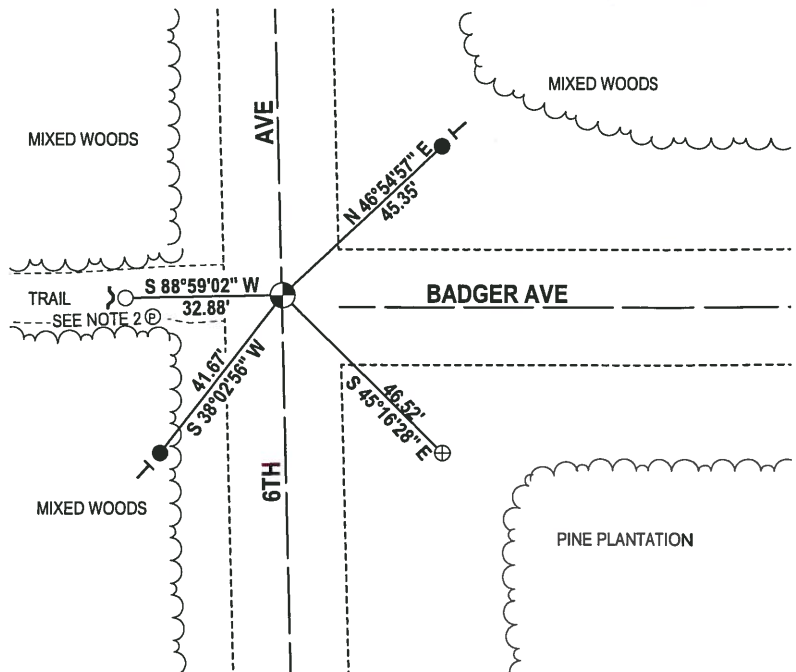
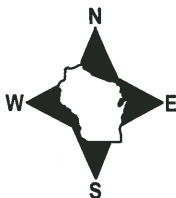
PROFESSIONAL LAND SURVEYOR

DATE 3-1-18

### - TIE SKETCH -

NOTE 1: THE CORNER FALLS 2± NORTH OF THE CENTERLINE OF BADGER AVE.

NOTE 2: 4" WOODED FENCE POST W/MAGNAIL S 80° W, 27.51'



- 3/4" x 18" IRON REBAR SET, 1.50#/FT
- 3/4" IRON ROD FOUND
- ⊕ 1-1/2" O.D. IROD PIPE FOUND
- ⊙ HARRISON FOUND
- ~ STEEL FENCE POST
- VINYL "T" POST

# ADAMS COUNTY

## Survey Monument Record

TYPE OF MONUMENT: 30" HARRISON

STATE PLANE COORDINATES: N \_\_\_\_\_

E \_\_\_\_\_

ELEVATION — M.S.L. DATUM: \_\_\_\_\_

THETA ANGLE: \_\_\_\_\_

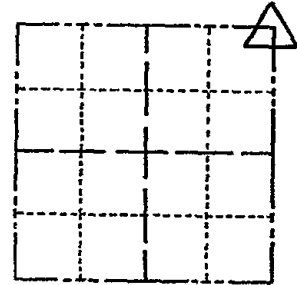
FIELD BOOK: 104 PAGE 85

CORNER NO. 54

SECTION 6

TOWN 19

RANGE 7



LOCATION  
(Indicated by 'X')

SEAL:

### BASIS FOR MONUMENT LOCATION

(Use reverse side if necessary)

Show info such as: History of corner, with reference to Vol. and pg. dates, surveyor; exact description of monument replaced; if location computed, by taped or EDM traverse; landowner remarks, etc.

Found iron pipe and set monument

October 15, 1971

Sam T. Millen R.L.S. S-981

1-NEW TIE. 9-19-06, - MC-EN  
 CORNER O.K. 4-26-77 GR-SS  
 NEW TIES 3-11-82 GR-SS  
 1 NEW TIE 3-26-87 GR-SS  
 2 GONE - 2 NEW 12-5-91 KE-J6  
 COR DK 3-7-97 JG-SS

CERTIFIED CORRECT:

Registered Land Surveyor

DATE: \_\_\_\_\_

1 NEW TIE 01-02-02 JG-SS

### TIE SKETCH

(Show at least four ties)

