

PUBLIC LAND SURVEY MONUMENT RECORD

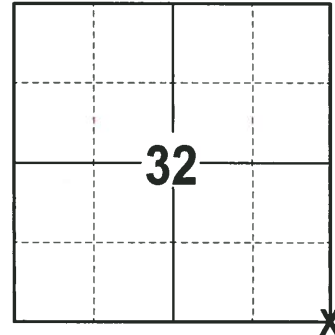
TYPE OF MONUMENT: HARRISON (BROKEN-TOP)
ADAMS COUNTY COORDINATES, NAD 83 (2007)

N. 287846.371

E. 567477.349

ELEVATION- - - DATUM - -

FIELD WORK DATE: 02/01/2018



LOCATION
(INDICATE CORNER BY "X")

BASIS FOR MONUMENT LOCATION

1974 - PLS 878 EXCAVATED WITH A BACKHOE AND FOUND A 6"X6"X16" SANDSTONE. LOWERED STONE AND SET HARRISON ON TOP AND TIED OUT.

2018 - PLS 2994 FOUND A HARRISON MONUMENT WITH A BROKEN-TOP 18" BELOW THE ROAD SURFACE, 1 PROPERTY IRON AND 1 TIE. THE MONUMENT AGREES THE EXISTING TIE. ACCEPTED THE HARRISON MONUMENT WITH A BROKEN-TOP AS THE CORNER LOCATION. SET 2 NEW TIES AND MEASURED TO THE TIES AND PROPERTY IRON.

SEAL:



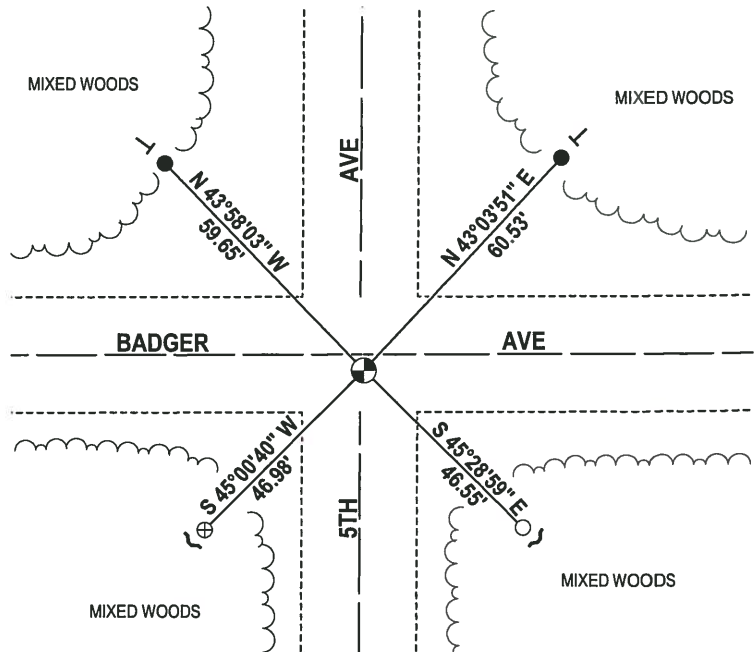
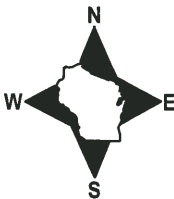
DATA SHOWN HERE ON THIS TIE SHEET IS CORRECT AND COMPLETE TO THE BEST OF MY KNOWLEDGE AND BELIEF.

PROFESSIONAL LAND SURVEYOR

DATE 3-1-18

- TIE SKETCH -

NOTE: THE CORNER FALLS 3 $\frac{1}{2}$ " SOUTH OF THE CENTERLINE OF BADGER AVE AND 1 $\frac{1}{2}$ " EAST OF THE CENTERLINE OF 5TH AVE.



- 3/4" x 18" IRON REBAR SET, 1.50#/FT
- 3/4" IRON ROD FOUND
- ⊕ 2-3/8" O.D. IRON PIPE FOUND
- ⊗ HARRISON (BROKEN-TOP) FOUND
- ↙ STEEL FENCE POST
- └ VINYL "T" POST

ADAMS COUNTY

Survey Monument Record

TYPE OF MONUMENT: Harrison Standard

STATE PLANE COORDINATES: N _____

E _____

ELEVATION — M.S.L. DATUM: _____

THETA ANGLE: _____

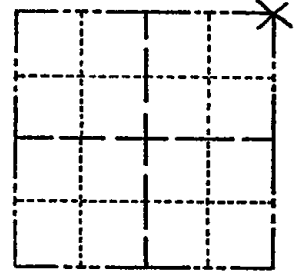
FIELD BOOK: _____ PAGE _____

CORNER NO. 464 ⁵

SECTION 5

TOWN 19

RANGE 7



LOCATION
(Indicated by 'X')

SEAL:



BASIS FOR MONUMENT LOCATION

(Use reverse side if necessary)

Show info such as: History of corner, with reference to Vol. and pg, dates, surveyor; exact description of monument replaced; if location computed, by taped or EDM traverse; landowner remarks, etc.

Excavated with backhoe. Found 6" x 6" x 16" sandstone. Lowered stone and set Harrison on top.

CORNER O.K. 4-26-77 GR-SS
" " 3-11-82 GR-SS
2 NEW TIES—TOP MON. BROKEN
BOTTOM IN PLACE 3-26-87 GR-SS
1 GONE—1 NEW 12-5-91 KZ-JL
2 " 3 " 3-7-97 JC-SS
OK 01-2-02 JG-IS

CERTIFIED CORRECT:

Anthony B. Kiedrowski
Registered Land Surveyor

DATE: July 31, 1974

03-15-07 SS 1 NEW TIE

TIE SKETCH

(Show at least four ties)

All ties to nail and disc.

