

33  
SECTION

20  
TOWN

07  
RANGE

# ADAMS COUNTY

COUNTY CORNER NO: 126  
ROMPORTOL ID: 42007330020

## PUBLIC LAND SURVEY MONUMENT RECORD

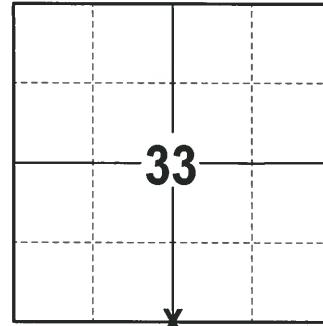
TYPE OF MONUMENT: HARRISON (BROKEN-TOP)  
ADAMS COUNTY COORDINATES, NAD 83 (2007)

N. 287864.123

E. 570114.280

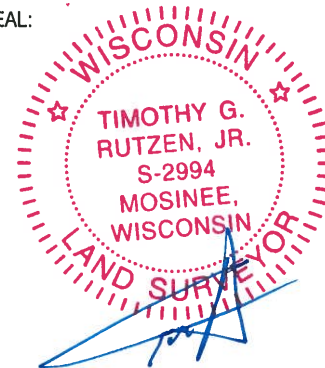
ELEVATION-      DATUM     

FIELD WORK DATE: 02/01/2018



**LOCATION**  
(INDICATE CORNER BY "X")

SEAL:



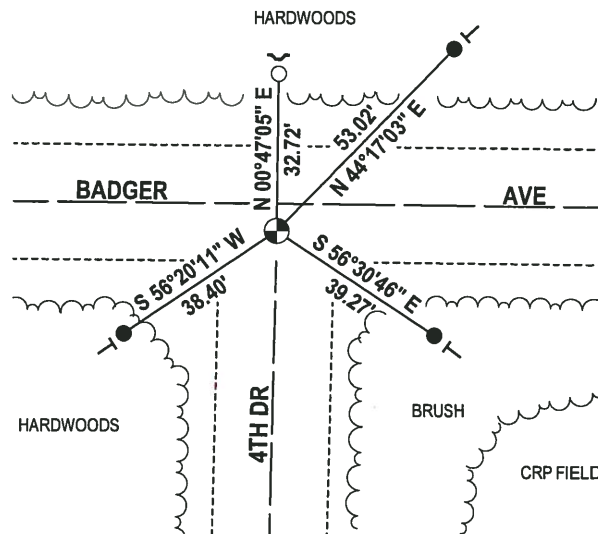
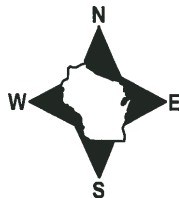
DATA SHOWN HERE ON THIS TIE SHEET IS CORRECT AND COMPLETE TO THE BEST OF MY KNOWLEDGE AND BELIEF.

PROFESSIONAL LAND SURVEYOR

DATE 3-1-18

### - TIE SKETCH -

NOTE: THE CORNER FALLS 6± SOUTH OF THE CENTERLINE OF BADGER AVE.

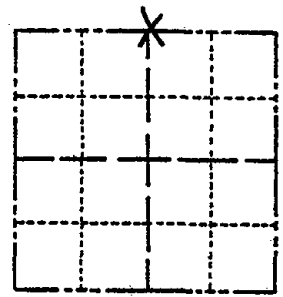


- 3/4" x 18" IRON REBAR SET, 1.50#/FT
- 3/4" IRON ROD FOUND
- ⊕ HARRISON (BROKEN-TOP) FOUND
- ✓ STEEL FENCE POST
- VINYL "T" POST

**Government Land Corner Certificate**

Adams County  
 TYPE OF MONUMENT: HARRISON  
 DATE PLANE COORDINATES: N \_\_\_\_\_ E \_\_\_\_\_  
 ELEVATION — M.S.L. DATUM: \_\_\_\_\_  
 THETA ANGLE: \_\_\_\_\_  
 FIELD BOOK: L.L. PAGE \_\_\_\_\_  
 DRAWN BY: Basler

CORNER NO. 6  
 SECTION 4  
 TOWN 19  
 RANGE 7E



LOCATION  
(Indicated by 'X')

**BASIS FOR MONUMENT LOCATION**

Show info such as: History of corner, with reference to Vol. and pg., dates, surveyor; exact description of monument replaced; if location computed, by taped or EDM traverse; landowner remarks, etc. (Use reverse side if necessary)

Dug for corner, could find no evidence of Original monument of of any remonumentation thereof. Set Harrison midway on straight line between NE Cor. & NW Cor. 4-19-7E.

SEAL:



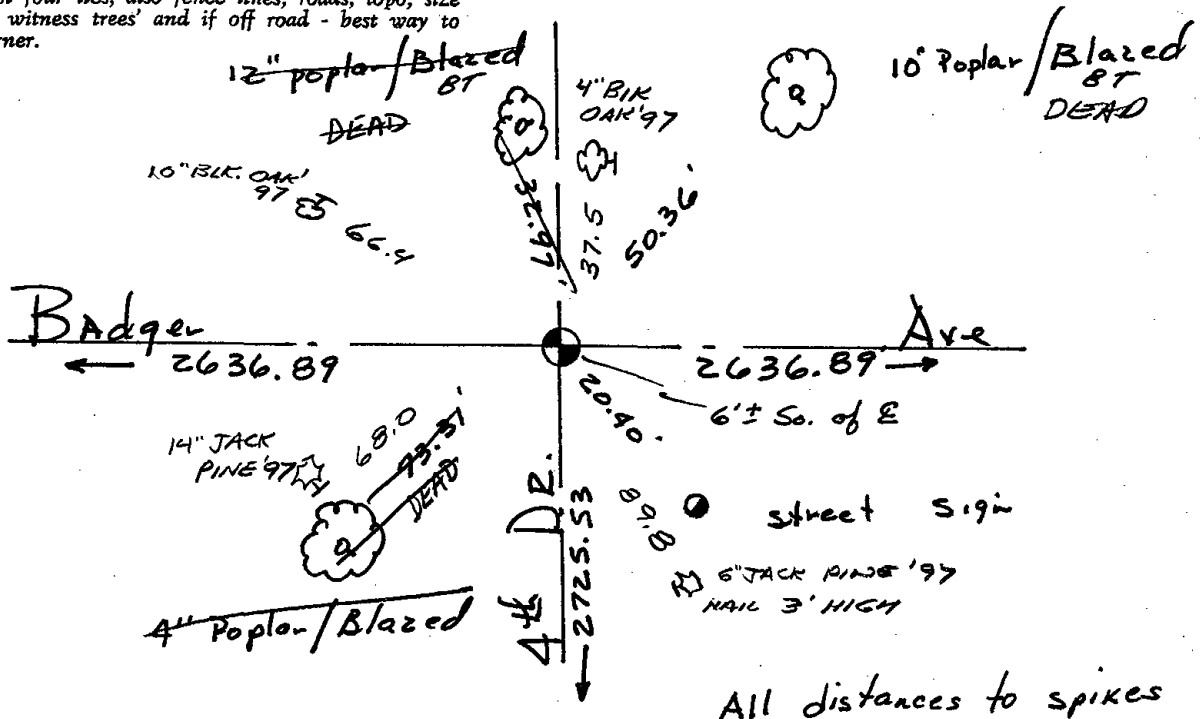
DATA SHOWN HERE ON  
 CERTIFIED CORRECT:

Wayne Basler  
 Registered Land Surveyor

DATE: July 15-1980

**TIE SKETCH**

Show at least four ties, also fence lines, roads, topo, size and type of witness trees and if off road - best way to arrive at corner.



All distances to spikes

