

01 SECTION 19 TOWN 06 RANGE

ADAMS COUNTY

COUNTY CORNER NO: 20

ROMPORTOL ID: 41906012000

PUBLIC LAND SURVEY MONUMENT RECORD

TYPE OF MONUMENT: HARRISON (BROKEN-TOP)
 ADAMS COUNTY COORDINATES, NAD 83 (2007)

N. 285018.018

E. 557186.055

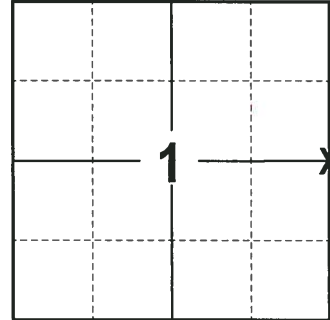
ELEVATION- DATUM

FIELD WORK DATE: 01/30/2018

BASIS FOR MONUMENT LOCATION

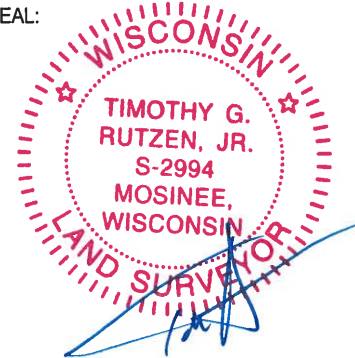
2013 - PLS 1478 RE-DRAFTED PRIOR TIE SHEET BY SAM T. MULLEN FROM 1971. SET A HARRISON MONUMENT AT THE CORNER LOCATION AND TIED OUT.

2018 - PLS 2994 FOUND A HARRISON MONUMENT WITH A BROKEN-TOP 6" BELOW THE GROUND SURFACE, 1 TIE AND 1 WITNESS. THE MONUMENT AGREES WITH THE EXISTING TIE AND WITNESS. ACCEPTED THE HARRISON MONUMENT WITH A BROKEN-TOP AS THE CORNER LOCATION. SET 3 NEW TIES AND MEASURED TO THE TIES AND WITNESS.



LOCATION
(INDICATE CORNER BY "X")

SEAL:



DATA SHOWN HERE ON THIS TIE SHEET IS CORRECT AND COMPLETE TO THE BEST OF MY KNOWLEDGE AND BELIEF.

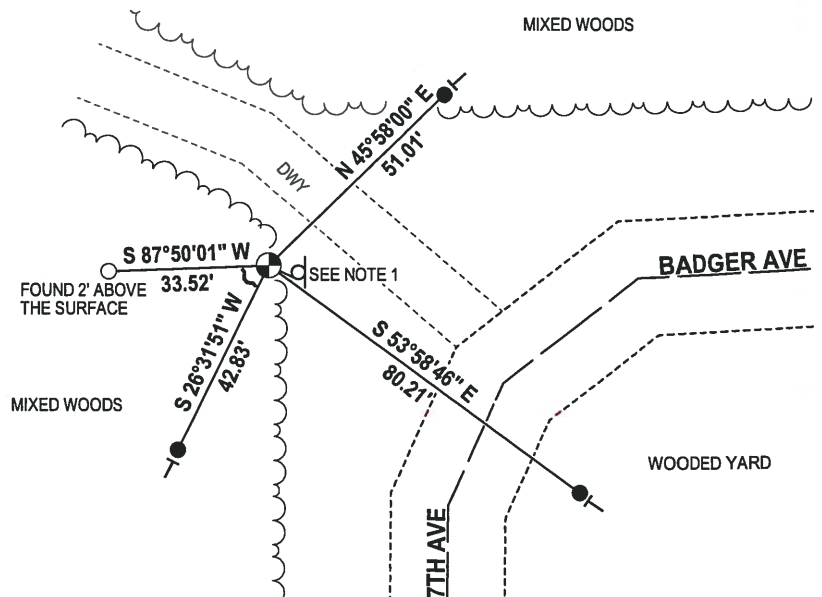
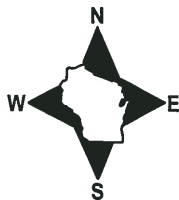
PROFESSIONAL LAND SURVEYOR

DATE 3-1-18

- TIE SKETCH -

NOTE 1: THE WITNESS SIGN IS S 55°29'50" E, 5.65' OF THE CORNER LOCATION.

NOTE 2: THE CORNER FALLS 54'± NORTH-WEST OF THE CENTERLINE OF 7TH AVE AND BADGER AVE.



- 3/4" x 18" IRON REBAR SET, 1.50#/FT
- 1-1/4" IRON ROD FOUND
- ⊕ HARRISON (BROKEN-TOP) FOUND
- ⊓ WITNESS SIGN FOUND
- ┌ STEEL FENCE POST
- └ VINYL "T" POST

