

02 SECTION 19 TOWN 07 RANGE

ADAMS COUNTY

COUNTY CORNER NO: 19
 ROMPORTOL ID: 41907022000

PUBLIC LAND SURVEY MONUMENT RECORD

TYPE OF MONUMENT: HARRISON
 ADAMS COUNTY COORDINATES, NAD 83 (1907)

N. 285143.696
 E. 583257.237

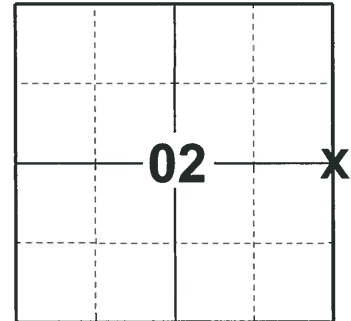
ELEVATION- - - - DATUM - - - -

FIELD WORK DATE: 04/30/2019

BASIS FOR MONUMENT LOCATION

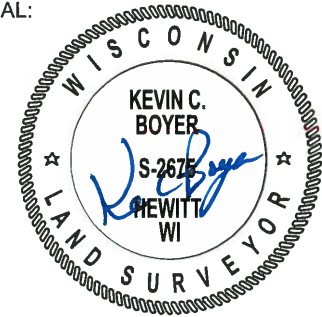
1975 - PLS 1103 RAN EDM/TRANSIT TRAVERSE AROUND SECTION 1 AND THE ADJACENT SECTIONS IN THE TOWN OF COLBURN. EXCAVATION WITH BACKHOE BY A.B.KIEDROWSKI, COUNTY SURVEYOR, YIELDED NO EVIDENCE OF THE ORIGINAL CORNER OR ANY REMONUMENTATION. SET CORNER ON LINE BETWEEN THE NORTHWEST AND SOUTHWEST CORNERS OF SECTION 1 AT THE PROTRACTION RECONSTRUCTED FROM A SURVEY BY L.LAMPERT, S-129, IN SECTION 2.

2019 - PLS 2675 FOUND 3/4"x18" REBAR IN THE ROAD SURFACE, REMOVED AND FOUND A HARRISON 24" BELOW THE ROAD SURFACE AND 1 WITNESS. THE MONUMENT AGREES WITH THE EXISTING WITNESS. ACCEPTED THE HARRISON AS THE CORNER LOCATION. SET 3 NEW TIES AND MEASURED TO THE EXISTING WITNESS AND A FOUND 3/4" IRON ROD.



LOCATION
 (INDICATE CORNER BY "X")

SEAL:



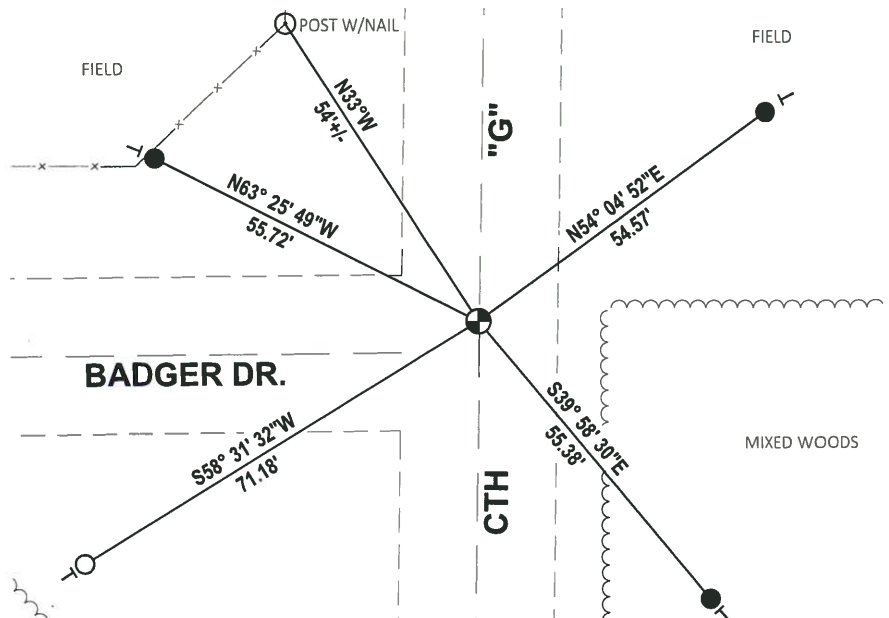
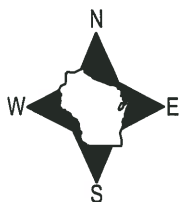
DATA SHOWN HERE ON THIS TIE SHEET IS CORRECT AND COMPLETE TO THE BEST OF MY KNOWLEDGE AND BELIEF.

PROFESSIONAL LAND SURVEYOR

DATE 6/4/19

- TIE SKETCH

NOTE: THE CORNER LANDS ON THE CENTERLINE OF CTH "G" AND 5± NORTH OF BADGER DR. CENTERLINE.



- SET 3/4" x 18" IRON REBAR, 1.50#/FT
- FOUND 3/4" IRON ROD
- ⊕ FOUND HARRISON MONUMENT
- ⊥ VINYL "T" POST

ADAMS COUNTY

Survey Monument Record

TYPE OF MONUMENT: Standard Harrison

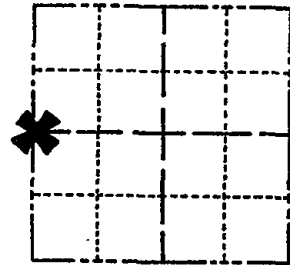
STATE PLANE COORDINATES: N _____ E _____

ELEVATION — M.S.L. DATUM: _____

THETA ANGLE: _____

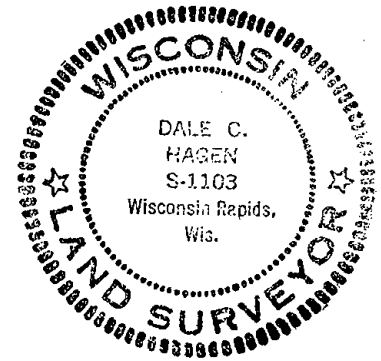
FIELD BOOK: _____ PAGE _____

CORNER NO. 821 (19)
SECTION 1
TOWN 19
RANGE 7



LOCATION (Indicated by 'X')

SEAL:



BASIS FOR MONUMENT LOCATION

(Use reverse side if necessary)

Show info such as: History of corner, with reference to Vol. and pg, dates, surveyor; exact description of monument replaced; if location computed, by taped or EDM traverse; landowner remarks, etc.

Ran EDM/transit traverse around Section 1 and the adjacent sections in the Town of Colburn.

Excavation with backhoe by A.B.Kiedrowski, County Surveyor, yielded no evidence of the original corner or any remonumentation.

Set corner on line between the Northwest and Southwest corners of Section 1 at the protraction reconstructed from a survey by L.L.Lampert, S-129, in Section 2.

CORNER O.K. 4-26-77 GR-SS
" " 3-17-82 GR-SS
3 NEW TIES 3-26-87 GR-SS
COR OK 1-8-92 - KE-JG
" " 3-18-97 JG-SS

CERTIFIED CORRECT:

Dale C. Hagen
Registered Land Surveyor
DATE: December 6, 1975

TIE SKETCH 1-GONE, 1-NEW 1-03-02 JG OK, 9-21-07-JG

(Show at least four ties)

NOTE:

Ties in trees and poles to nail and disc.

