

ADAMS COUNTY

Survey Monument Record

TYPE OF MONUMENT: Harrison Monument

STATE PLANE COORDINATES: N _____

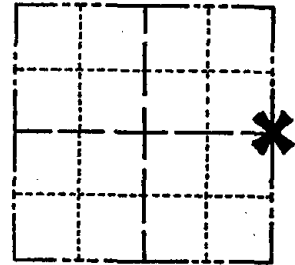
E _____

ELEVATION — M.S.L. DATUM: _____

THETA ANGLE: _____

FIELD BOOK: 101 PAGE 15

CORNER NO. 807
 SECTION 1
 TOWN 19
 RANGE 7



LOCATION (Indicated by 'X')

SEAL:

BASIS FOR MONUMENT LOCATION

(Use reverse side if necessary)

Show info such as: History of corner, with reference to Vol. and pg, dates, surveyor; exact description of monument replaced; if location computed, by taped or EDM traverse; landowner remarks, etc.

Excavated with backhoe. Found bottom 12" of 3" diameter pointed wood stake in very decayed condition. Accepted as corner after checking location with an EDM traverse. Monumented with Harrison.



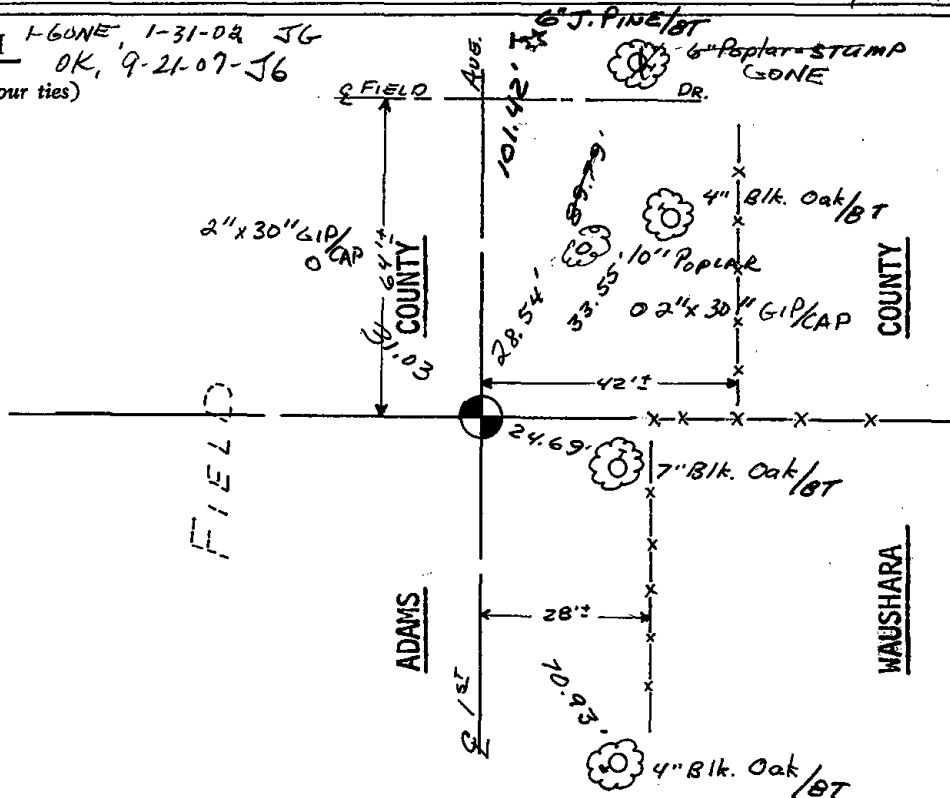
CORNER	O.K.	4-26-77	GR-SS
"	"	3-17-82	GR-SS
"	"	3-19-87	GR-SS
"	"	1-8-92	KZ-JG
"	"	3-18-97	JG-SS

CERTIFIED CORRECT:

Anthony B. Kiedrowski
 Registered Land Surveyor

DATE: 1/10/75

TIE SKETCH 1-GONE, 1-31-02 JG
OK, 9-21-07-J6
 (Show at least four ties)



STATE OF WISCONSIN)
WAUSHARA COUNTY) SS

I, Gary E. Schindler, do hereby certify that on the 5th day of July, 1988, I found (evidence) (no evidence) of the Wily corner of Section 6, T 19 N, R 8 E, Fourth Principal Meridian, and I re-established said corner according to the Wisconsin Statutes as shown and described hereon.

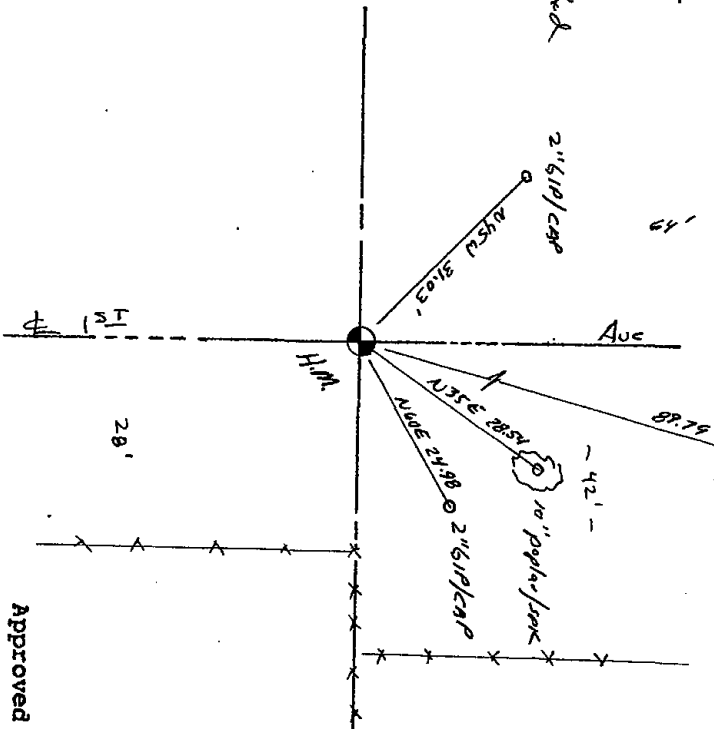
Dated this 5th day of July, 1988

Gary E. Schindler
Waushara County Surveyor

Procedure: retical and marked

WAUSHARA COUNTY
CERTIFIED LAND CORNER

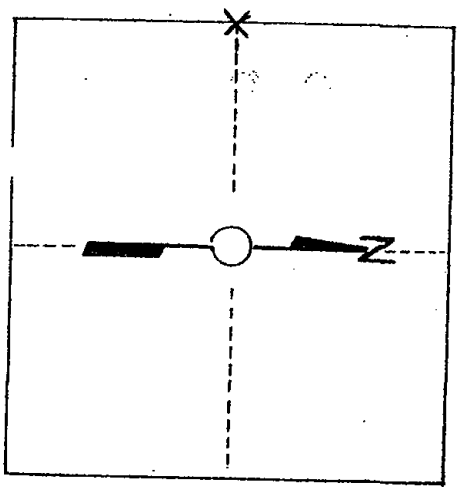
Description of corner evidence found:
MONUMENT and 1 tie AS PER
APRM 5 COUNTY TIE SHEET VOL 101 Pg 15



No. 14
Witnesses to corner location:

Dan Entinger
Scott Schindler

Section 6



T. 19 N R 8 E
WISCONSIN

Approved By: _____

Surveyor's Office
Waushara County, Wisconsin