

06 SECTION 19 TOWN 07 RANGE

ADAMS COUNTY

COUNTY CORNER NO: 22

ROMPORTOL ID: 41907060020

PUBLIC LAND SURVEY MONUMENT RECORD

TYPE OF MONUMENT: HARRISON
ADAMS COUNTY COORDINATES, NAD 83 (1907)

N. 282439.961

E. 559549.566

ELEVATION- DATUM

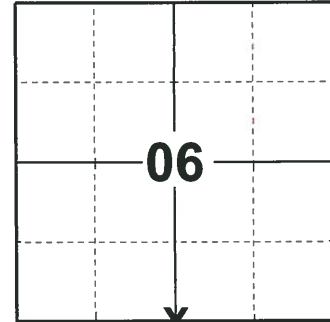
FIELD WORK DATE: 05/01/2019

BASIS FOR MONUMENT LOCATION

1965 - PLS 878 IRON PIPE SET BY A.B.K. IN 1965. SET ON A STRAIGHT LINE BETWEEN CORNERS.

1973 - PLS 878 FOUND IRON PIPE AND SET MONUMENT.

2019 - PLS 2675 FOUND HARRISON 6" BELOW THE ROAD SURFACE AND 2 TIES. THE MONUMENT AGREES WITH BOTH TIES. ACCEPTED THE HARRISON AS THE CORNER LOCATION. SET 2 NEW TIES AND MEASURED TO THE EXISTING TIES.



LOCATION

(INDICATE CORNER BY "X")

SEAL:



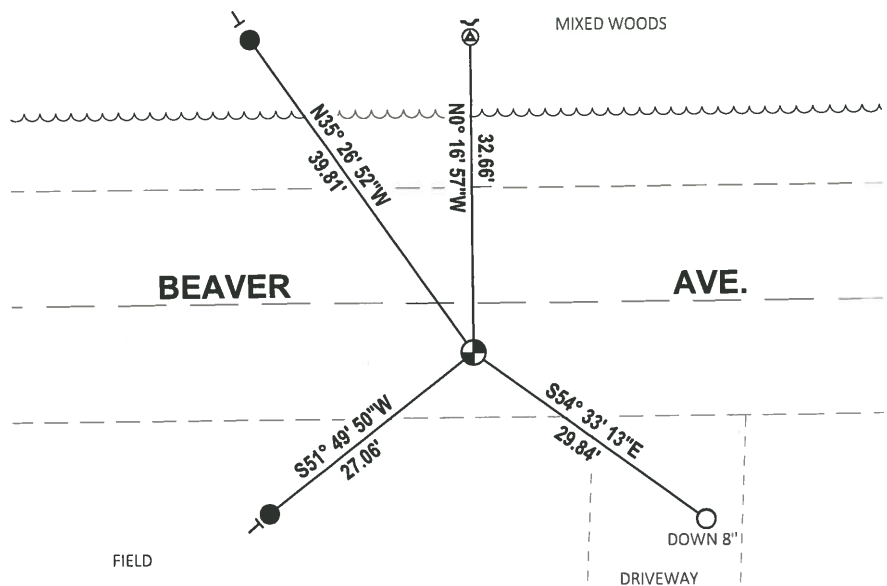
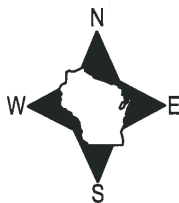
DATA SHOWN HERE ON THIS TIE SHEET IS CORRECT AND COMPLETE TO THE BEST OF MY KNOWLEDGE AND BELIEF.

PROFESSIONAL LAND SURVEYOR

DATE 6/4/19

TIE SKETCH

NOTE: THE CORNER LANDS ±5' SOUTH OF BEAVER AVE. CENTERLINE.



- SET 3/4" x 18" IRON REBAR, 1.50#/FT
- FOUND 3/4" IRON ROD
- ⊙ CONCRETE MONUMENT WITH 'X'
- ⊕ FOUND HARRISON MONUMENT
- ↵ STEEL FENCE POST
- ┊ VINYL "T" POST

ADAMS COUNTY

Survey Monument Record

CORNER NO. 208

SECTION 6

TOWN 19

RANGE 7

TYPE OF MONUMENT: 30" HARRISON

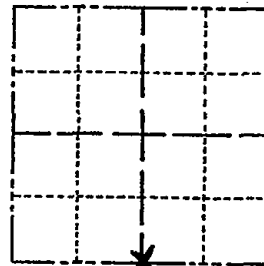
STATE PLANE COORDINATES: N _____

E _____

ELEVATION — M.S.L. DATUM: _____

THETA ANGLE: _____

FIELD BOOK: 107 PAGE 15



LOCATION
(Indicated by 'X')

SEAL:



BASIS FOR MONUMENT LOCATION

(Use reverse side if necessary)

Show info such as: History of corner, with reference to Vol. and pg, dates, surveyor; exact description of monument replaced; if location computed, by taped or EDM traverse; landowner remarks, etc.

Found iron pipe and set monument

October 13, 1972

Anthony B. Kiedrowski R.L.S. 878

Iron pipe set by A.B.K. in 1965.
Set on a straight line between corners.

1-NEW TIE 7-19-06 MC + EN

CORNER	O.K.	4-26-77	GR-SS
"	"	3-18-02	GR-SS
1 NEW TIE		3-26-07	GR-SS

CERTIFIED CORRECT:

Anthony B. Kiedrowski
Registered Land Surveyor

2-GONE, NOTHING AVAILABLE, 3 TIES NORTH 12-5-91 KE-36 DATE: 1-30-73

TIE SKETCH

2-GONE, 2-NEW GR OR 37-97 16-SS
OK 01-02-02 16-SS

(Show at least four ties)

