

04 SECTION 19 TOWN 07 RANGE

ADAMS COUNTY

COUNTY CORNER NO: 26
ROMPORTOL ID: 41907040020

PUBLIC LAND SURVEY MONUMENT RECORD

TYPE OF MONUMENT: HARRISON (BROKEN-TOP)
ADAMS COUNTY COORDINATES, NAD 83 (1907)

N. 282498.566
E. 570073.552

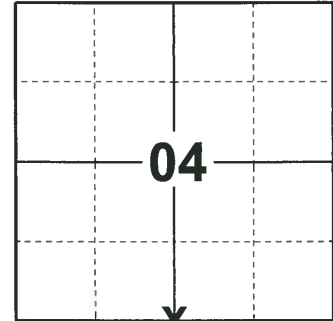
ELEVATION- - - - DATUM - - - -

FIELD WORK DATE: 04/29/2019

BASIS FOR MONUMENT LOCATION

1975 - PLS 1103 RAN EDM/TRANSIT TRAVERSE AROUND SECTIONS 1, 2, 3, 10, 11, 12, 13, 14, 15, 24 AND THE SOUTH LINE OF SECTION 4, TO DETERMINE SEARCH AREAS. COULD FIND NO EVIDENCE ON THE ORIGINAL CORNER OR ANY REMONUMENTATION. SET CORNER EQUIDISTANT AND ON LINE BETWEEN THE SOUTHWEST AND THE SOUTHEAST CORNERS OF SECTION 4.

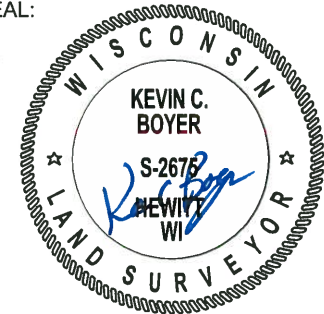
2019 - PLS 2675 FOUND HARRISON (BROKEN-TOP) 6" BELOW THE ROAD SURFACE 1 TIE AND 2 WITNESSES. THE MONUMENT AGREES WITH THE TIE AND BOTH WITNESSES. ACCEPTED THE HARRISON (BROKEN-TOP) AS THE CORNER LOCATION. SET 3 NEW TIES AND MEASURED TO THE EXISTING TIE AND WITNESSES.



LOCATION

(INDICATE CORNER BY "X")

SEAL:



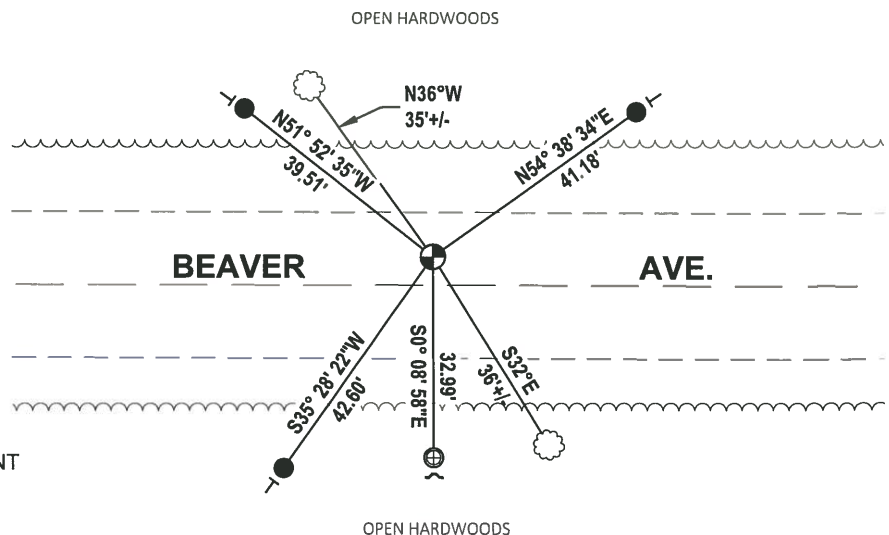
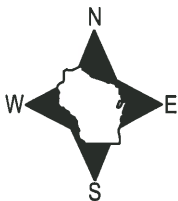
DATA SHOWN HERE ON THIS TIE SHEET IS CORRECT AND COMPLETE TO THE BEST OF MY KNOWLEDGE AND BELIEF.

PROFESSIONAL LAND SURVEYOR

DATE 6/4/19

TIE SKETCH

NOTE: THE CORNER LANDS ±5' NORTH OF BEAVER AVE. CENTERLINE.



- SET 3/4" x 18" IRON REBAR, 1.50#/FT
- ⊕ FOUND 1.00" O.D. IRON PIPE
- ⊕ FOUND HARRISON (BROKEN-TOP) MONUMENT
- ✓ STEEL FENCE POST
- ┌ VINYL "T" POST
- ☁ WITNESS TREE

ADAMS COUNTY

Survey Monument Record

TYPE OF MONUMENT: Harrison Monument

STATE PLANE COORDINATES: N _____

E _____

ELEVATION — M.S.L. DATUM: _____

THETA ANGLE: _____

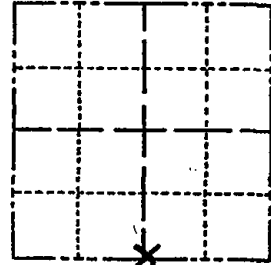
FIELD BOOK: _____ PAGE _____

CORNER NO. 811

SECTION 4

TOWN 19

RANGE 7



LOCATION
(Indicated by 'X')

SEAL:

BASIS FOR MONUMENT LOCATION

(Use reverse side if necessary)

Show info such as: History of corner, with reference to Vol. and pg, dates, surveyor; exact description of monument replaced; if location computed, by taped or EDM traverse; landowner remarks, etc.

Ran EDM/transit traverse around Sections 1, 2, 3, 10, 11, 12, 13, 14, 15, 24 and the South line of Section 4, to determine search areas.

Could find no evidence on the original corner or any remonumentation.

Set corner Equidistant and on line between the Southwest and the Southeast corners of Section 4.



CERTIFIED CORRECT:

Dale C. Hagen

Registered Land Surveyor

DATE: Nov. 5, 1975

CORNER O.K. 4-26-77 GR-SS
 " " 3-18-82 GR-SS
 " " 3-26-87 GR-SS
 1-GONE, 2-NEW 12-5-91 KZ-JG
 3 NEW TIES 3-18-97 JG-SS

TIE SKETCH 1-GONE, 1-NEW 1-03-02 JG
 OK, 9-21-07 JG
 (Show at least four ties)

NOTE:

Ties in trees to nail in disc.

