

04 SECTION 19 TOWN 07 RANGE

ADAMS COUNTY

COUNTY CORNER NO: 27

ROMPORTOL ID: 41907040000

PUBLIC LAND SURVEY MONUMENT RECORD

TYPE OF MONUMENT: HARRISON
ADAMS COUNTY COORDINATES, NAD 83 (1907)

N. 282497.538

E. 572706.427

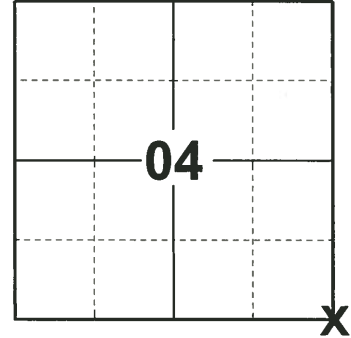
ELEVATION- DATUM

FIELD WORK DATE: 04/29/2019

BASIS FOR MONUMENT LOCATION

1975 - PLS 1103 RAN EDM/TRANSIT TRAVERSE AROUND SECTION 3 AND THE ADJACENT SECTIONS IN THE TOWN OF COLBURN TO DETERMINE THE SEARCH AREA FOR THIS CORNER. NO EVIDENCE OF THE ORIGINAL CORNER OR ANY REMONUMENTATION WAS FOUND. EXCAVATION WITH BACKHOE WAS NOT ATTEMPTED BECAUSE THE SEARCH AREA FELL WITHIN THE CONSTRUCTION AREA FOR THE ADJACENT DRAINAGE DITCH. RELOCATED CORNER BY DOUBLE-PROPORTIONATE MEASURE BETWEEN THE FOUR ADJACENT SECTION CORNERS.

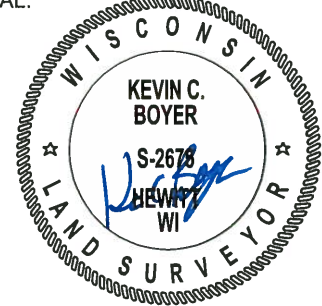
2019 - PLS 2675 FOUND HARRISON 12" BELOW THE ROAD SURFACE AND 2 TIES. THE MONUMENT AGREES WITH BOTH TIES. ACCEPTED THE HARRISON AS THE CORNER LOCATION. SET 2 NEW TIES AND MEASURED TO THE EXISTING TIES.



LOCATION

(INDICATE CORNER BY "X")

SEAL:



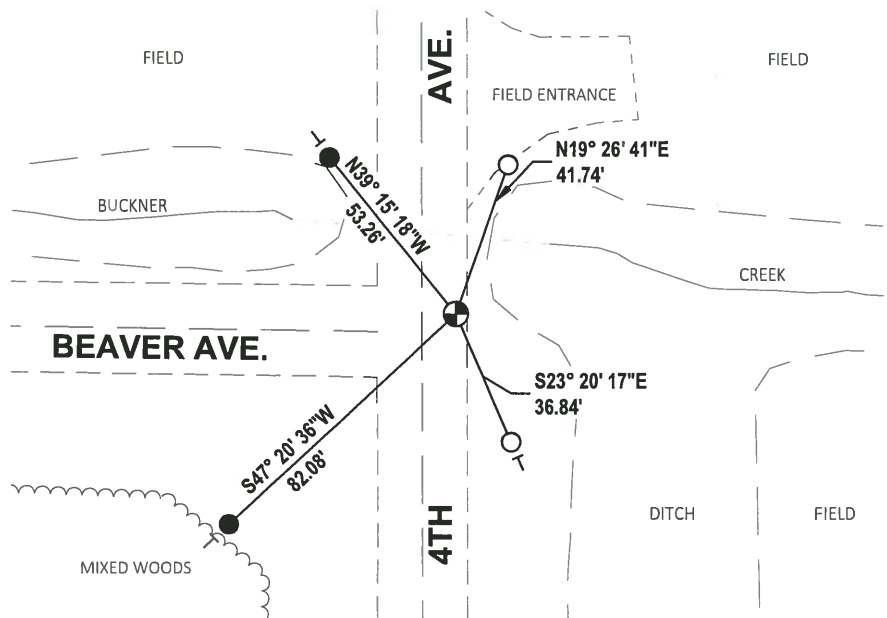
DATA SHOWN HERE ON THIS TIE SHEET IS CORRECT AND COMPLETE TO THE BEST OF MY KNOWLEDGE AND BELIEF.

PROFESSIONAL LAND SURVEYOR

DATE 6/4/19

- TIE SKETCH

NOTE: THE CORNER FALLS ±5' NORTH OF BEAVER AVE. CENTERLINE AND ±8' EAST OF 4TH AVE. CENTERLINE.



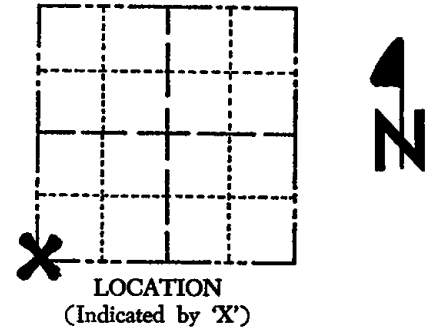
- SET 3/4" x 18" IRON REBAR, 1.50#/FT
- FOUND 3/4" IRON ROD
- ⊕ FOUND HARRISON MONUMENT
- ┊ VINYL "T" POST

ADAMS COUNTY

CORNER NO. 826
 SECTION 3
 TOWN 19
 RANGE 7

Survey Monument Record

TYPE OF MONUMENT: Standard Harrison
 STATE PLANE COORDINATES: N _____
 E _____
 ELEVATION — M.S.L. DATUM: _____
 THETA ANGLE: _____
 FIELD BOOK: _____ PAGE _____



BASIS FOR MONUMENT LOCATION

(Use reverse side if necessary)

Show info such as: History of corner, with reference to Vol. and pg, dates, surveyor; exact description of monument replaced; if location computed, by taped or EDM traverse; landowner remarks, etc.

Ran EDM/transit traverse around Section 3 and the adjacent Sections in the Town of Colburn to determine the search area for this corner.

No evidence of the original corner or any remonumentation was found. Excavation with backhoe was not attempted because the search area fell within the construction area for the adjacent drainage ditch.

Relocated corner by double-proportionate measure between the four adjacent section corners.

SEAL: LOCATION (Indicated by 'X')



CERTIFIED CORRECT:
Dale C. Hagen
 Registered Land Surveyor
 DATE: December 20, 1975

CORNER	O.K.	4-26-77	GR-SS
"	"	3-18-82	GR-SS
"	"	3-26-87	GR-SS
12-5-91	"	KZ-JG	

TIE SKETCH 3-18-97 JG-SS OK
 1-GONE 2-NEW 1-03-02 JG
 (Show at least four ties) OK, 9-21-07-JG

NOTE:

Ties in trees and posts to nail in disc.

