

02 SECTION 19 TOWN 07 RANGE

ADAMS COUNTY

COUNTY CORNER NO: 30
 ROMPORTOL ID: 41907020020

PUBLIC LAND SURVEY MONUMENT RECORD

TYPE OF MONUMENT: HARRISON
 ADAMS COUNTY COORDINATES, NAD 83 (1907)

N. 282497.000

E. 580570.136

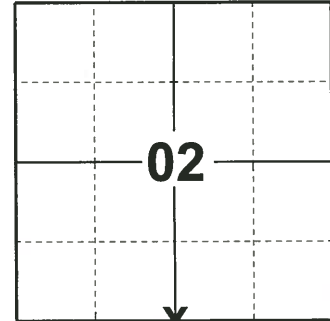
ELEVATION- _____ DATUM _____

FIELD WORK DATE: 04/30/2019

BASIS FOR MONUMENT LOCATION

1975 - PLS 1103 TAN EDM/TRANSIT TRAVERSE AROUND SECTION 2 AND THE ADJACENT SECTIONS IN THE TOWN OF COLBURN. COULD FIND NO EVIDENCE OF THE ORIGINAL CORNER OR ANY REMONUMENTATION OF THE CORNER. RELOCATED CORNER ON LINE BETWEEN THE SOUTHEAST AND SOUTHWEST CORNERS OF SECTION 2 AND AT THE PROTRACTED DISTANCE USED BY L.L.LAMPERT IN HIS SURVEY IN SECTION 2.

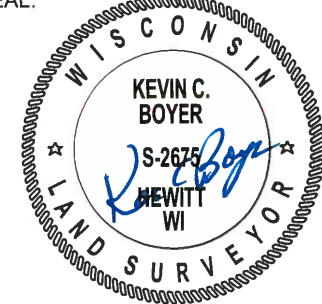
2019 - PLS 2675 FOUND HARRISON FLUSH WITH THE GROUND SURFACE AND 2 WITNESSES. THE MONUMENT AGREES WITH BOTH WITNESSES. ACCEPTED THE HARRISON AS THE CORNER LOCATION. SET 4 NEW TIES AND MEASURED TO THE EXISTING WITNESSES.



LOCATION

(INDICATE CORNER BY "X")

SEAL:

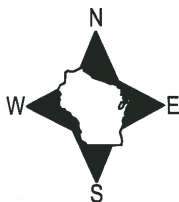


DATA SHOWN HERE ON THIS TIE SHEET IS CORRECT AND COMPLETE TO THE BEST OF MY KNOWLEDGE AND BELIEF.

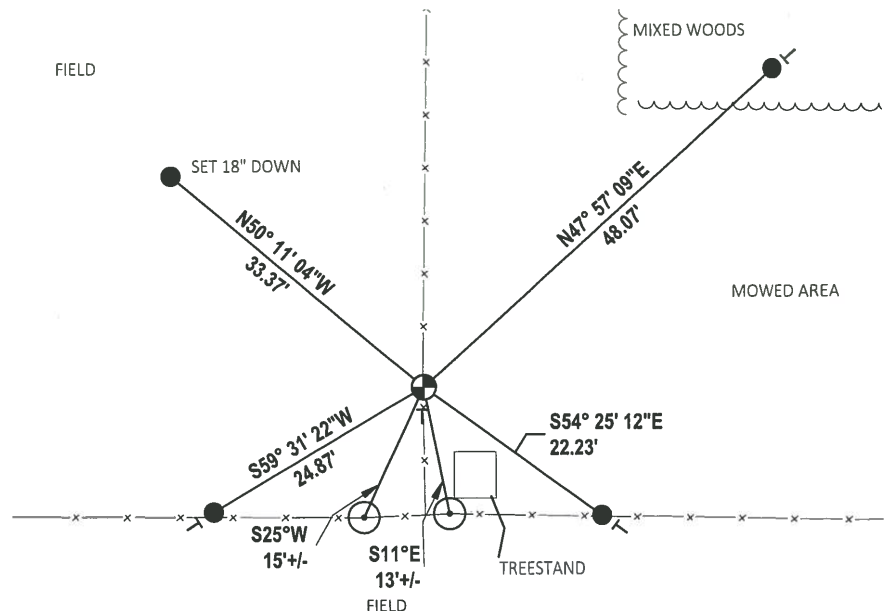
PROFESSIONAL LAND SURVEYOR

DATE 6/4/19

TIE SKETCH



FIELD



- SET 3/4" x 18" IRON REBAR, 1.50#/FT
- ⊕ FOUND HARRISON MONUMENT
- ⊙ FENCE POST WITH NAIL
- ⊣ VINYL "T" POST

ADAMS COUNTY

Survey Monument Record

TYPE OF MONUMENT: Standard Harrison

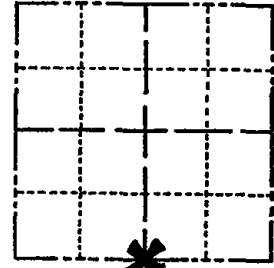
STATE PLANE COORDINATES: N _____ E _____

ELEVATION — M.S.L. DATUM: _____

THETA ANGLE: _____

FIELD BOOK: _____ PAGE _____

CORNER NO. 822
SECTION 2
TOWN 19
RANGE 7



LOCATION (Indicated by 'X')

SEAL:



BASIS FOR MONUMENT LOCATION

(Use reverse side if necessary)

Show info such as: History of corner, with reference to Vol. and pg, dates, surveyor; exact description of monument replaced; if location computed, by taped or EDM traverse; landowner remarks, etc.

Ran EDM/transit traverse around Section 2 and the adjacent sections in the Town of Colburn.

Could find no evidence of the original corner or any remonumentation of the corner.

Relocated corner on line between the Southeast and Southwest corners of Section 2 and at the protracted distance used by L.L.Lampert in his survey in Section 2.

CORNER O.K. 4-26-77 GR-SS
" " 8-23-82 PK-SS
2 NEW TIES 3-31-87 SS
OK - 2-25-02 JG-SS
OK, 9-24-07-J6

CERTIFIED CORRECT:
Dale C. Hagen
Registered Land Surveyor
DATE: December 2, 1975

TIE SKETCH

(Show at least four ties)

□ = RR tie fence posts

NOTE:

Ties in trees and posts to nail in disc.

