

01 SECTION 19 TOWN 07 RANGE

ADAMS COUNTY

COUNTY CORNER NO: 32
ROMPORTOL ID: 41907010020

PUBLIC LAND SURVEY MONUMENT RECORD

TYPE OF MONUMENT: HARRISON
ADAMS COUNTY COORDINATES, NAD 83 (1907)

N. 282499.405

E. 585902.608

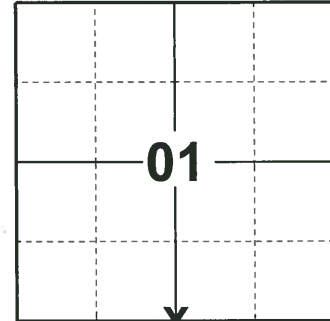
ELEVATION- _____ DATUM _____

FIELD WORK DATE: 04/24/2019

BASIS FOR MONUMENT LOCATION

1975 - PLS 1103 RAN EDM/TRANSIT TRAVERSE AROUND SECTION 1 AND THE ADJACENT SECTIONS IN THE TOWN OF COLBURN. COULD FIND NO EVIDENCE OF THE ORIGINAL CORNER OR ANY REMONUMENTATION. SET SOUTH QUARTER CORNER PROPORTIONALLY AND ON LINE BETWEEN SOUTHEAST AND SOUTHWEST CORNERS OF SECTION 1.

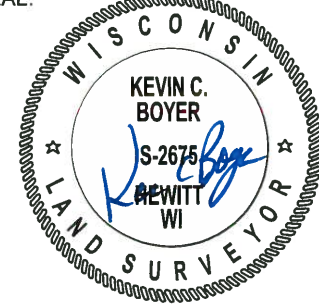
2019 - PLS 2675 FOUND HARRISON 6" BELOW THE SWAMP SURFACE AND 2 WITNESSES. THE MONUMENT AGREES WITH BOTH WITNESSES. ACCEPTED HARRISON AS THE CORNER LOCATION. SET 4 NEW TIES AND MEASURED TO THE EXISTING WITNESSES.



LOCATION

(INDICATE CORNER BY "X")

SEAL:



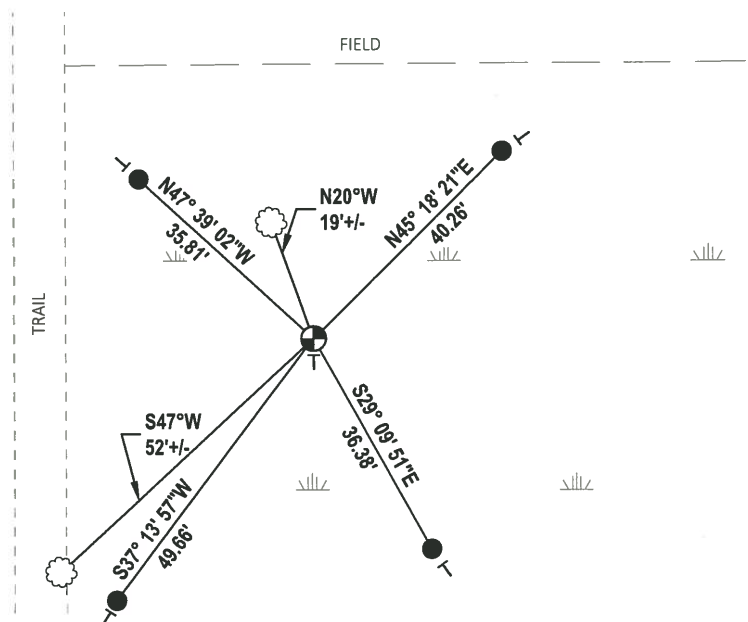
DATA SHOWN HERE ON THIS TIE SHEET IS CORRECT AND COMPLETE TO THE BEST OF MY KNOWLEDGE AND BELIEF.

PROFESSIONAL LAND SURVEYOR

DATE 6/4/19

TIE SKETCH

NOTE: THE CORNER LANDS 37.5± EAST OF THE TRAIL AND 150± SOUTH OF THE FIELD EDGE.



- SET 3/4" x 48" IRON REBAR, 1.50#/FT
- ⊙ FOUND HARRISON MONUMENT
- VINYL "T" POST
- ☼ WITNESS TREE

ADAMS COUNTY

Survey Monument Record

TYPE OF MONUMENT: Harrison Monument

STATE PLANE COORDINATES: N _____

E _____

ELEVATION — M.S.L. DATUM: _____

THETA ANGLE: _____

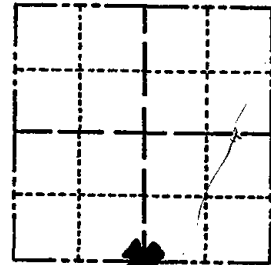
FIELD BOOK: _____ PAGE _____

CORNER NO. 809

SECTION 1

TOWN 19

RANGE 7



LOCATION
(Indicated by 'X')

SEAL:

BASIS FOR MONUMENT LOCATION

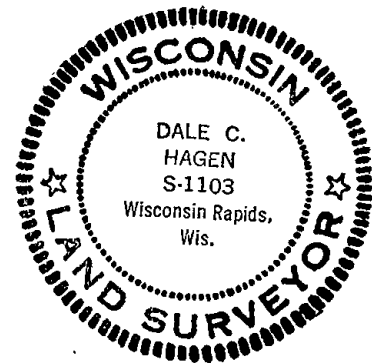
(Use reverse side if necessary)

Show info such as: History of corner, with reference to Vol. and pg, dates, surveyor; exact description of monument replaced; if location computed, by taped or EDM traverse; landowner remarks, etc.

Ran EDM/transit traverse around Section 1 and the adjacent sections in the Town of Colburn.

Could find no evidence of the original corner or any remonumentation.

Set South Quarter Corner proportionally and on line between Southeast and Southwest corners of Section 1.



CERTIFIED CORRECT:

Dale C. Hagen

Registered Land Surveyor
DATE: November 5, 1975

CORNER	O.K.	4-26-77	GR-SS
"	"	8-24-82	PK-SS
3-NEW		3-19-87	GR-SS
COR OK		6-24-92	JG
1-NEW TIE		1-31-02	JG

TIE SKETCH 3-DEAD, 2-NEW TIES, MON. OK 10-4-07 JB-CS FIELD

(Show at least four ties)

NOTE:

Ties in trees to nail in disc.

