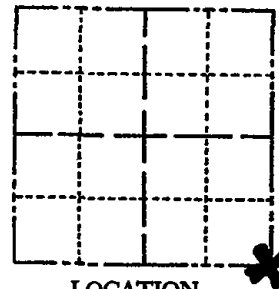


ADAMS COUNTY

Survey Monument Record

TYPE OF MONUMENT: Harrison standard
 STATE PLANE COORDINATES: N _____
 E _____
 ELEVATION — M.S.L. DATUM: _____
 THETA ANGLE: _____
 FIELD BOOK: 101 PAGE 15

CORNER NO. 808 ⁽³³⁾
 SECTION 1
 TOWN 19
 RANGE 7



LOCATION
(Indicated by 'X')

SEAL:



BASIS FOR MONUMENT LOCATION

(Use reverse side if necessary)

Show info such as: History of corner, with reference to Vol. and pg, dates, surveyor; exact description of monument replaced; if location computed, by taped or EDM traverse; landowner remarks, etc.

Excavated with backhoe. Found 5"x5"(bottom) x 12" tapered stone. Stain from driven post found under stone. Lowered stone and put Harrison on top.

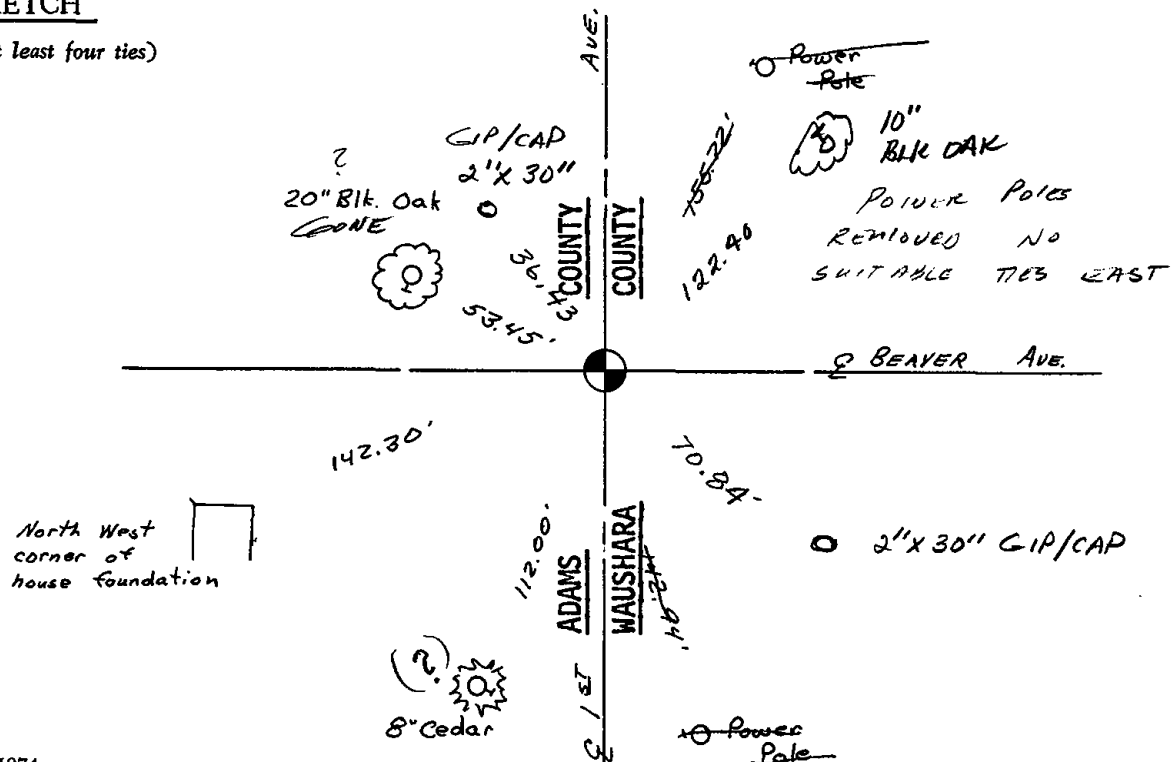
CORNER O.K. 4-26-77 GR-55
 " " 3-18-82 GR-55
 " " 3-19-87 GR-55
 1-NEW, COR OK 1-8-92 KZ-JG
 CORNER OK 3-18-97 JG-55
 " " 1-31-02 JG
 1-GONE, 4-REMAIN 9-21-07-JG

CERTIFIED CORRECT:

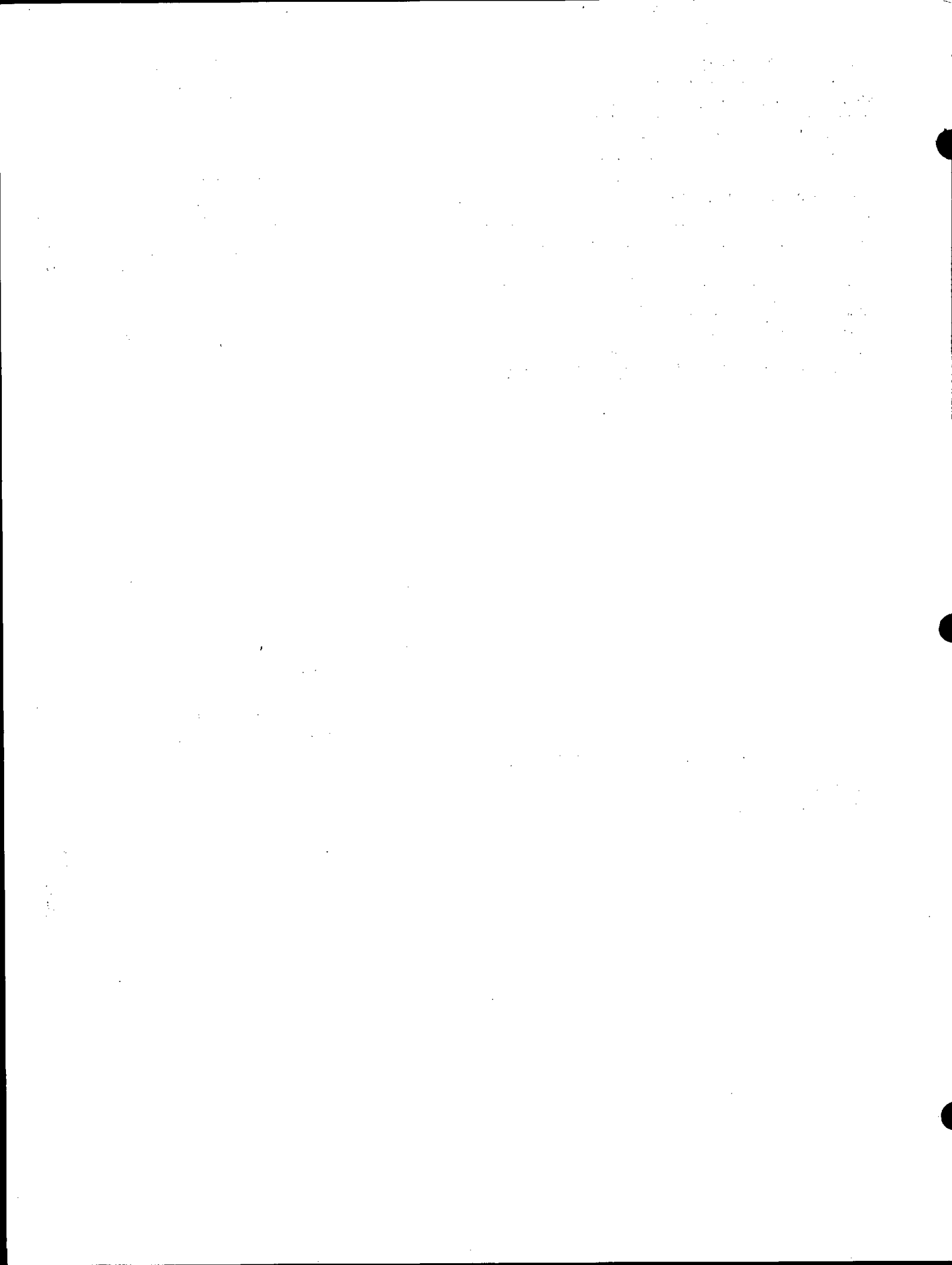
Anthony B. Kiedrowski
 Registered Land Surveyor
 DATE: 11/10/75

TIE SKETCH

(Show at least four ties)



North West corner of house foundation



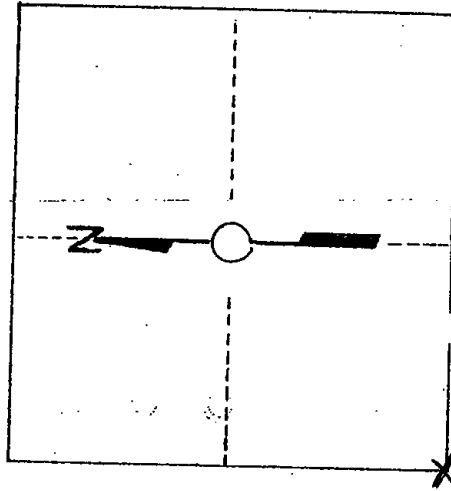
WAUSHARA COUNTY
CERTIFIED LAND CORNER

Description of corner evidence found:
HAMILTON MONUMENT AND TWO TIERS N.E. PER
ADAM COUNTY RECORDS VOL 101 Pgs 15

No. 33
Witnesses to corner location:

Dan Entinger
Scott Schindler

Section 6



T. 19 N R 8 E
WISCONSIN

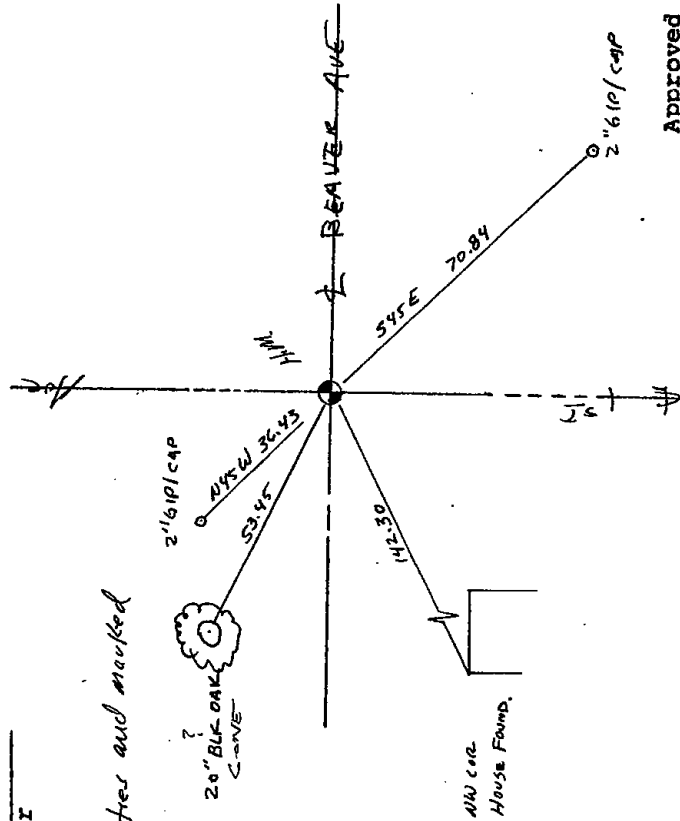
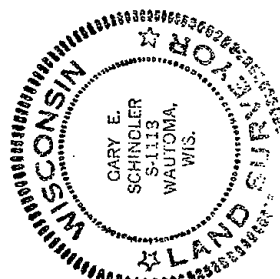
STATE OF WISCONSIN)
WAUSHARA COUNTY)

I, Gary E Schindler, do
hereby certify that on the 5th day
of July, 1988, I found
(evidence) (no evidence) of the
SW corner of Sec 6,
T 19 N, R 8 E, Fourth Principal
Meridian, and I re-established
said corner according to the Wis-
consin Statutes as shown and des-
cribed hereon.

Dated this 5th day of July, 1988

Gary E Schindler
Waushara County Surveyor

Procedure: Added two ties and marked



Approved By: _____