

# ADAMS COUNTY

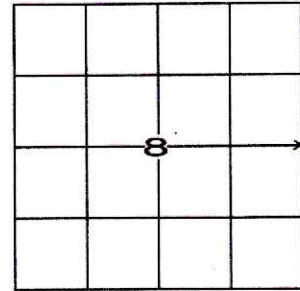
## PUBLIC LAND SURVEY MONUMENT RECORD

Type of Monument Broken Harrison

Adams County Coordinates (NAD 83, 2011)

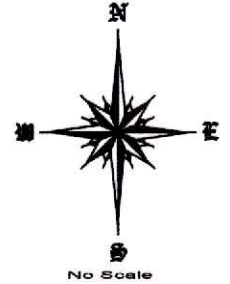
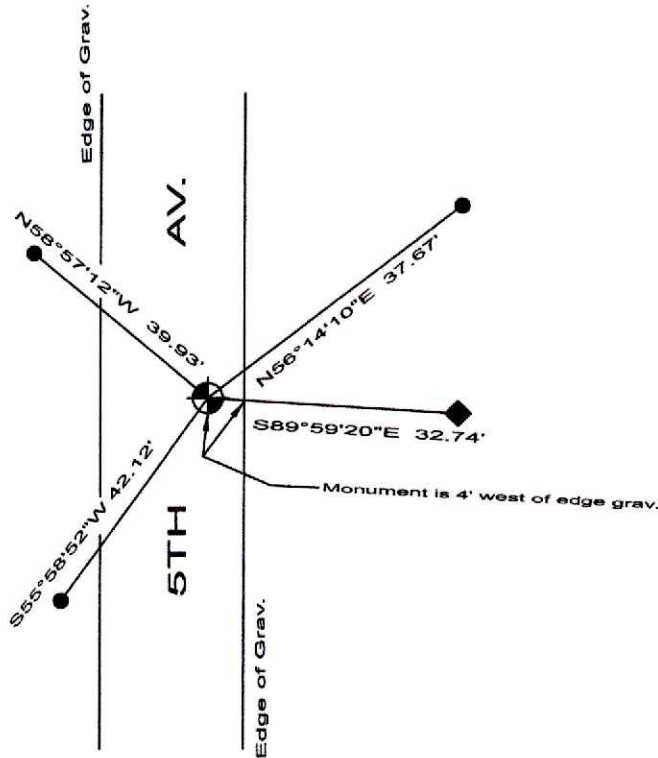
Northing 279868.475

Easting 567448.116



**Corner History and Basis for Location**

- 1974 - PLS 878 excavated and found nothing. Set Harrison online and equidistant between section corners.
- 2019 - PLS 2675 found Harrison monument with broken top 2" below surface. Accepted Harrison and set 4 new ties.
- 2022 - PLS 1739 found broken and tilted Harrison monument 1" below surface and 4 ties. Set monument upright and referenced. Excavated around monument and lowered to 6" below surface. Monument measured length was 1.5'. Measured to the existing 4 ties.



*Jerol M. Smart*  
 WISCONSIN  
 Jerol M. Smart  
 S-1739  
 Montello  
 WI  
 LAND SURVEYOR  
 JUNE 20, 2023

- Found broken Harrison monument
- Found 3/4" iron rod w/ Carsonite post
- Found 1" iron pipe w/ steel fence post

I, Jerol M. Smart, P.L.S., Adams County Surveyor, do hereby certify that the information shown hereon is correct and that I have fully complied with Wisconsin Statutes and Admin. code to the best of my knowledge and belief.

08 SECTION 19 TOWN 07 RANGE

# ADAMS COUNTY

COUNTY CORNER NO: 36  
 ROMPORTOL ID: 41907082000

## PUBLIC LAND SURVEY MONUMENT RECORD

TYPE OF MONUMENT: HARRISON (BROKEN-TOP)  
 ADAMS COUNTY COORDINATES, NAD 83 (1907)

N. 279868.377

E. 567448.327

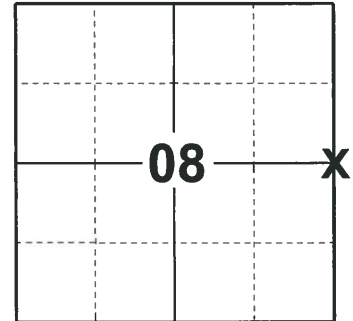
ELEVATION- - - - - DATUM - - - - -

FIELD WORK DATE: 05/02/2019

### BASIS FOR MONUMENT LOCATION

1974 - PLS 878 SET ON A STRAIGHT LINE EQUIDISTANT BETWEEN SECTION CORNERS. EXCAVATED AREA WITH BACKHOE, FOUND NOTHING.

2019 - PLS 2675 FOUND HARRISON (BROKEN-TOP) 2" BELOW THE ROAD SURFACE AND 1 TIE. THE MONUMENT AGREES WITH THE TIE. ACCEPTED THE HARRISON (BROKEN-TOP) AS THE CORNER LOCATION. SET 3 NEW TIES AND MEASURED TO THE EXISTING TIE.



**LOCATION**  
(INDICATE CORNER BY "X")

SEAL:



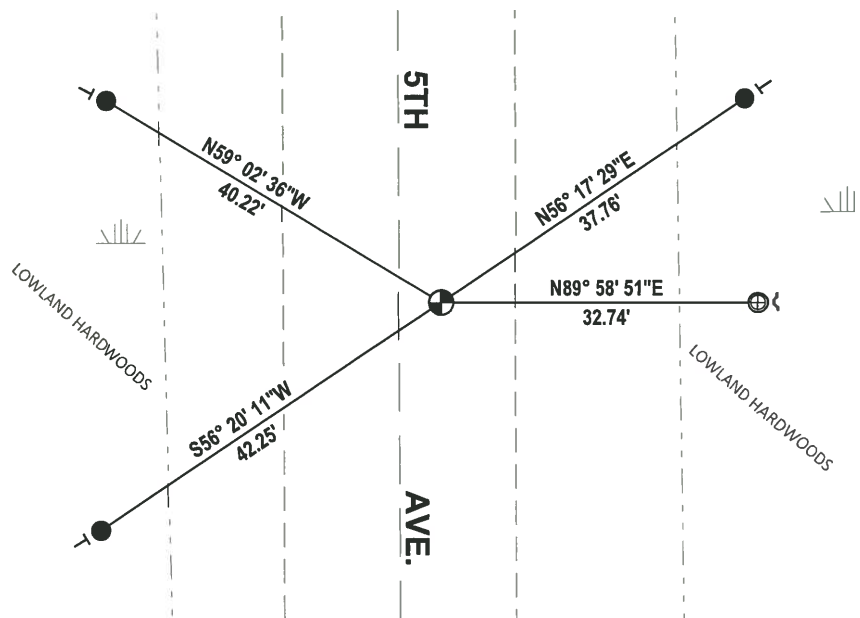
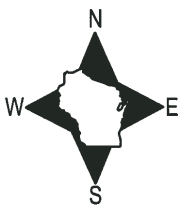
DATA SHOWN HERE ON THIS TIE SHEET IS CORRECT AND COMPLETE TO THE BEST OF MY KNOWLEDGE AND BELIEF.

PROFESSIONAL LAND SURVEYOR

DATE 6/4/19

### - TIE SKETCH -

NOTE: THE CORNER LANDS ±4' EAST OF 5TH AVE. CENTERLINE.



- SET 3/4" x 18" IRON REBAR, 1.50#/FT
- ⊕ FOUND 1.0" O.D. IRON PIPE
- ⊙ FOUND HARRISON (BROKEN-TOP) MONUMENT
- ┘ STEEL FENCE POST
- └ VINYL "T" POST

**ADAMS COUNTY**

**Survey Monument Record**

TYPE OF MONUMENT: Harrison Standard

STATE PLANE COORDINATES: N \_\_\_\_\_

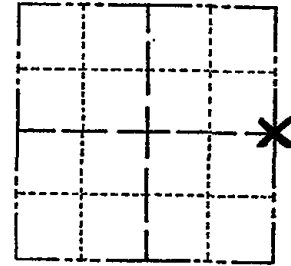
E \_\_\_\_\_

ELEVATION — M.S.L. DATUM: \_\_\_\_\_

THETA ANGLE: \_\_\_\_\_

FIELD BOOK: \_\_\_\_\_ PAGE \_\_\_\_\_

CORNER NO. 409 <sup>(36)</sup>  
 SECTION 8  
 TOWN 19  
 RANGE 7



LOCATION  
(Indicated by 'X')

SEAL:



**BASIS FOR MONUMENT LOCATION**

(Use reverse side if necessary)

Show info such as: History of corner, with reference to Vol. and pg, dates, surveyor; exact description of monument replaced; if location computed, by taped or EDM traverse; landowner remarks, etc.

Set on a straight line equidistant between section corners. Excavated area with backhoe, found nothing.

CORNER O.K.	6-14-77	SK-SS
TOP BROKEN	3-18-82	GR-SS
OK	3-30-97	GR-SS
"	12-5-91	KZ-JG
3 NEW TIES	3-18-97	JG-SS
OK	1-03-02 JG	OK, 9-24-07-JG

CERTIFIED CORRECT:

*Anthony B. Kiedrowski*  
Registered Land Surveyor

DATE: 6/6/74

**TIE SKETCH**

(Show at least four ties)

