

11 SECTION 19 TOWN 07 RANGE

ADAMS COUNTY

COUNTY CORNER NO: 39

ROMPORTOL ID: 41907112000

PUBLIC LAND SURVEY MONUMENT RECORD

TYPE OF MONUMENT: SURVEY NAIL
ADAMS COUNTY COORDINATES, NAD 83 (1907)

N. 279832.823

E. 583247.781

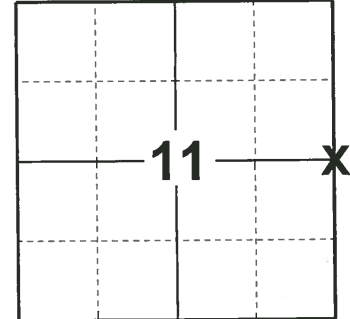
ELEVATION- - - - - DATUM - - - - -

FIELD WORK DATE: 05/02/2019

BASIS FOR MONUMENT LOCATION

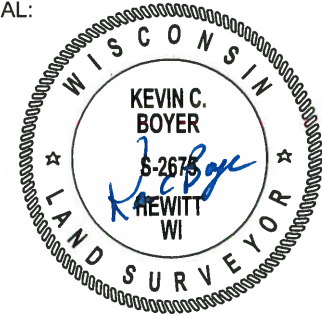
1975 - PLS 1103 RAN EDM/TRANSIT TRAVERSE AROUND SECTION 12 AND THE ADJACENT SECTIONS IN THE TOWN OF COLBURN TO DETERMINE THE SEARCH AREAS FOR INVESTIGATION. COULD FIND NO EVIDENCE OF THE ORIGINAL CORNER OF ANY REMONUMENTATION. RELOCATED CORNER EQUIDISTANT AND ON LINE BETWEEN THE ADJACENT SECTION CORNERS.

2019 - PLS 2675 FOUND NO EVIDENCE OF A MONUMENT OR ANY TIES OR WITNESSES. CALCULATED CORNER ON A STRAIGHT LINE EQUIDISTANT BETWEEN THE NE AND SE CORNERS OF SECTION 11. SET A SURVEY NAIL FOR THE CORNER LOCATION AND SET 4 NEW TIES.



LOCATION
(INDICATE CORNER BY "X")

SEAL:



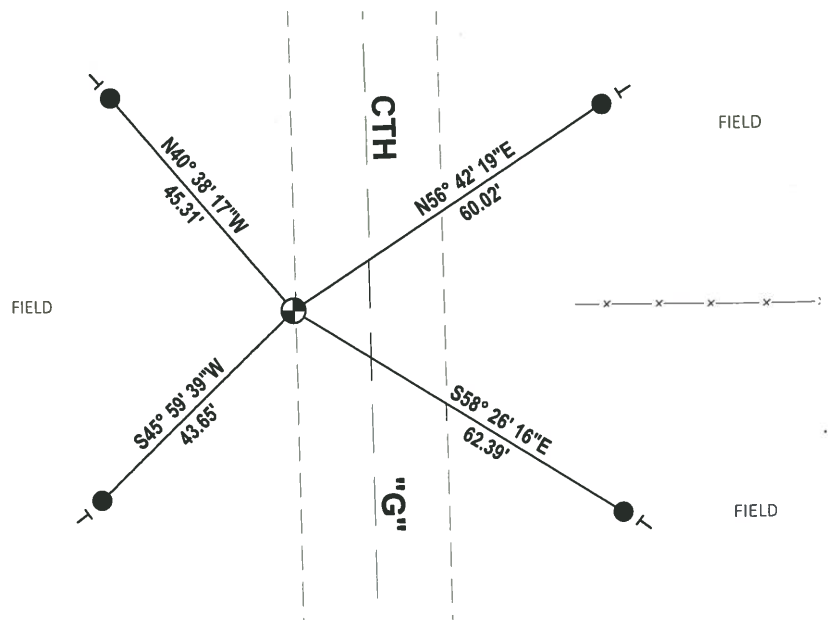
DATA SHOWN HERE ON THIS TIE SHEET IS CORRECT AND COMPLETE TO THE BEST OF MY KNOWLEDGE AND BELIEF.

PROFESSIONAL LAND SURVEYOR

DATE 6/4/19

TIE SKETCH

NOTE: THE CORNER LANDS ±12' WEST OF CTH "G" CENTERLINE.



- SET 3/4" x 18" IRON REBAR, 1.50#/FT
- ⊕ SET SURVEY NAIL MONUMENT
- ┊ VINYL "T" POST

ADAMS COUNTY

Survey Monument Record

TYPE OF MONUMENT: Standard Harrison

STATE PLANE COORDINATES: N _____

E _____

ELEVATION — M.S.L. DATUM: _____

THETA ANGLE: _____

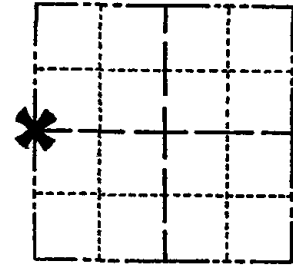
FIELD BOOK: _____ PAGE _____

CORNER NO. 830 (39)

SECTION 12

TOWN 19

RANGE 7



LOCATION
(Indicated by 'X')

SEAL:



BASIS FOR MONUMENT LOCATION

(Use reverse side if necessary)

Show info such as: History of corner, with reference to Vol. and pg. dates, surveyor; exact description of monument replaced; if location computed, by taped or EDM traverse; landowner remarks, etc.

Ran EDM/transit traverse around Section 12 and the adjacent sections in the town of Colburn to determine the search areas for investigation.

Could find no evidence of the original corner or any remonumentation.

Relocated corner equidistant and on line between the adjacent section corners.

CORNER	O.K.	-4-26-77	GR-SS
"	"	8-23-82	PK-SS
"	"	4-6-87	GR-SS
"	"	1-8-92	KZ-JG
"	"	3-18-97	JL-SS

CERTIFIED CORRECT:

Dale C. Hagen

Registered Land Surveyor
December 2, 1975

DATE:

TIE SKETCH 1-GONE 2-25-02 JG-SS
OK, 9-24-07-JG

(Show at least four ties)

NOTE:

Ties in trees to nail in disc.
No other bearing objects available.

