

ADAMS COUNTY

Survey Monument Record

TYPE OF MONUMENT: Harrison standard

STATE PLANE COORDINATES: N _____
E _____

ELEVATION — M.S.L. DATUM: _____

THETA ANGLE: _____

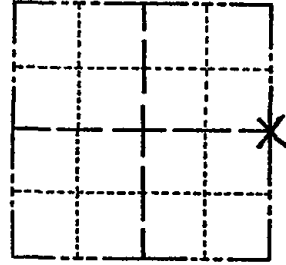
FIELD BOOK: 101 PAGE 14

CORNER NO. 787 ⁽⁴⁰⁾

SECTION 12

TOWN 19 N

RANGE 7 E



LOCATION
(Indicated by 'X')

SEAL:

BASIS FOR MONUMENT LOCATION

(Use reverse side if necessary)

Show info such as: History of corner, with reference to Vol. and pg, dates, surveyor; exact description of monument replaced; if location computed, by taped or EDM traverse; landowner remarks, etc.



CERTIFIED CORRECT:

Anthony B. Kiedrowski
Registered Land Surveyor

DATE: 8/7/75

Excavated with backhoe. Found 4x5x20" squared sandstone. Lowered stone and put Harrison on top. No record of stone. Location verified by EDM traverse of the section.

CORNER O.K. Spring '77
" " 3-18-82 GR-55

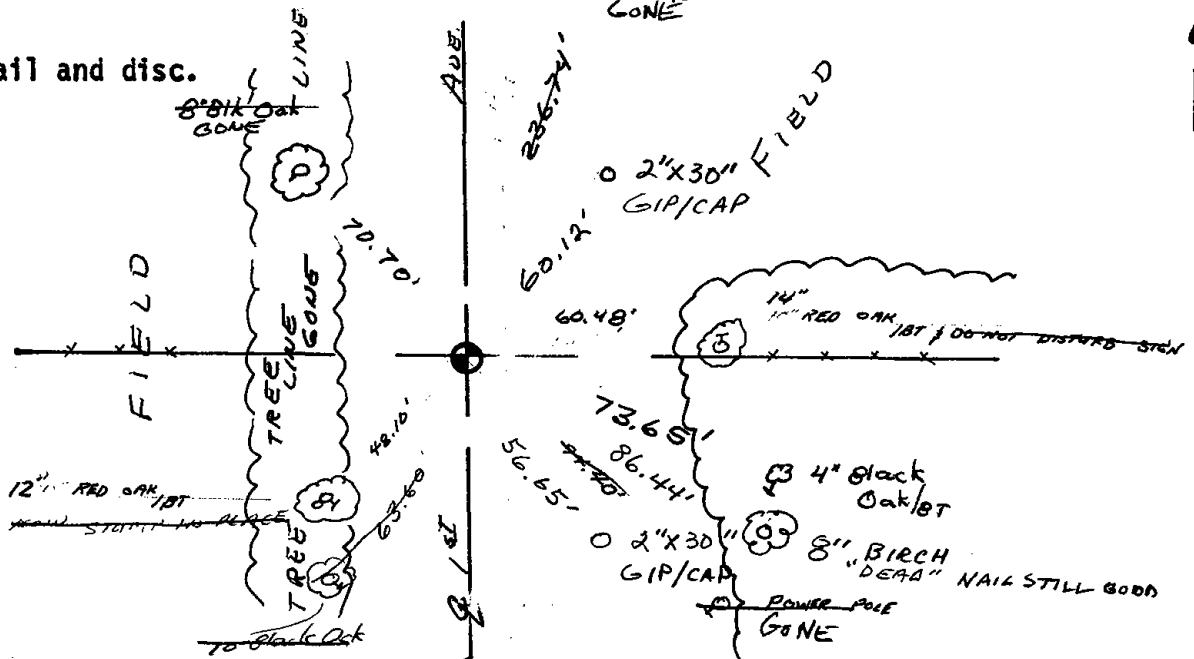
(NOTHING AVAILABLE)
2-GONE, LOOK AT WAH. CTY TIES 1-8-92 KZ-56

TIE SKETCH

SEE WAH. CTY TIE SHEET
3-18-97 JG-55

(Show at least four ties) CORNER OK 1-31-02 JG
" " 2-15-07

Ties to nail and disc.



WAUSHARA COUNTY
 CERTIFIED LAND CORNER
 Description of corner evidence found:
 HARRISON MONUMENT (404415 COUNTY RECORDS)

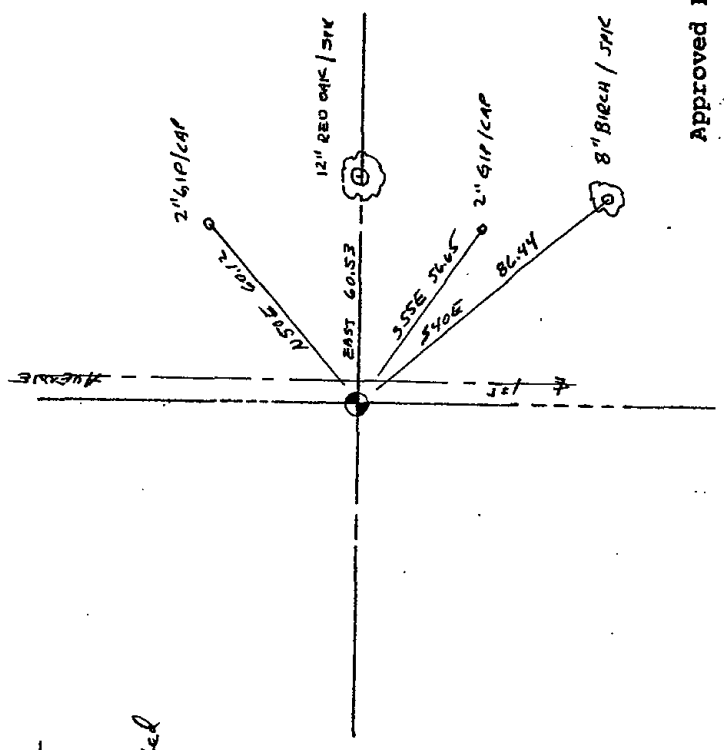
No. 34
 Witnesses to corner location:
Dan Entwinger
Scott Schindler

STATE OF WISCONSIN) SS
 WAUSHARA COUNTY)
 I, Gery E. Schindler, do hereby certify that on the 5th day of July, 1988, I found (evidence) (no evidence) of the W114 corner of Section 7, T 19 N, R 8 E, Fourth Principal Meridian, and I re-established said corner according to the Wisconsin Statutes as shown and described hereon.

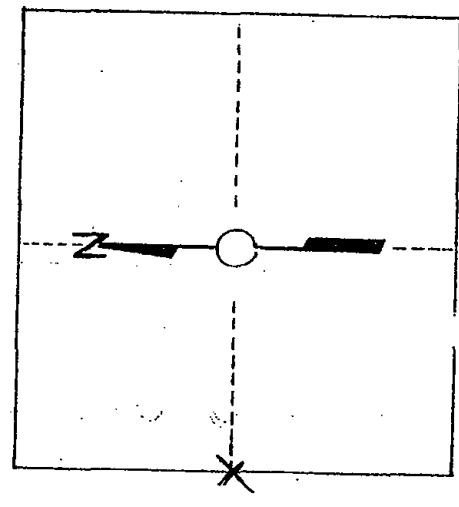
Dated this 5th day of July, 1988

Gery E. Schindler
 Waushara County Surveyor

Procedure: relied and marked



Section 7



T. 19 N R 8 E
 WISCONSIN

Approved By: _____