

07 SECTION 19 TOWN 07 RANGE

ADAMS COUNTY

COUNTY CORNER NO: 42
ROMPORTOL ID: 41907070020

PUBLIC LAND SURVEY MONUMENT RECORD

TYPE OF MONUMENT: HARRISON (BROKEN-TOP)
ADAMS COUNTY COORDINATES, NAD 83 (1907)

N. 277142.161

E. 559531.390

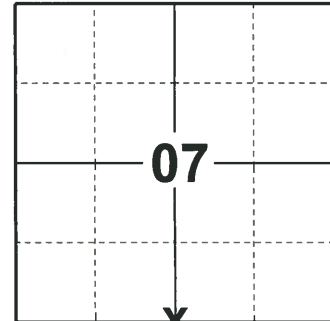
ELEVATION- - - - DATUM - - - -

FIELD WORK DATE: 05/06/2019

BASIS FOR MONUMENT LOCATION

1973 - PLS 878 EXCAVATED AREA WITH A BACKHOE AND FOUND A CHARCOAL STAKE IN CENTER OF CHARCOAL PIT. MONUMENTED STAKE WITH A HARRISON MONUMENT. TIED OUT CORNER.

2019 - PLS 2675 FOUND A HARRISON MONUMENT WITH A BROKEN-TOP 4" BELOW THE ROAD SURFACE. FOUND NO EVIDENCE OF ANY OF THE EXISTING TIES OR WITNESSES DUE TO LOGGING IN THE AREA. ACCEPTED THE HARRISON MONUMENT WITH A BROKEN-TOP AS THE BEST EVIDENCE OF THE CORNER LOCATION. SET 4 NEW TIES AND MEASURED TO THE TIES.



LOCATION

(INDICATE CORNER BY "X")

SEAL:



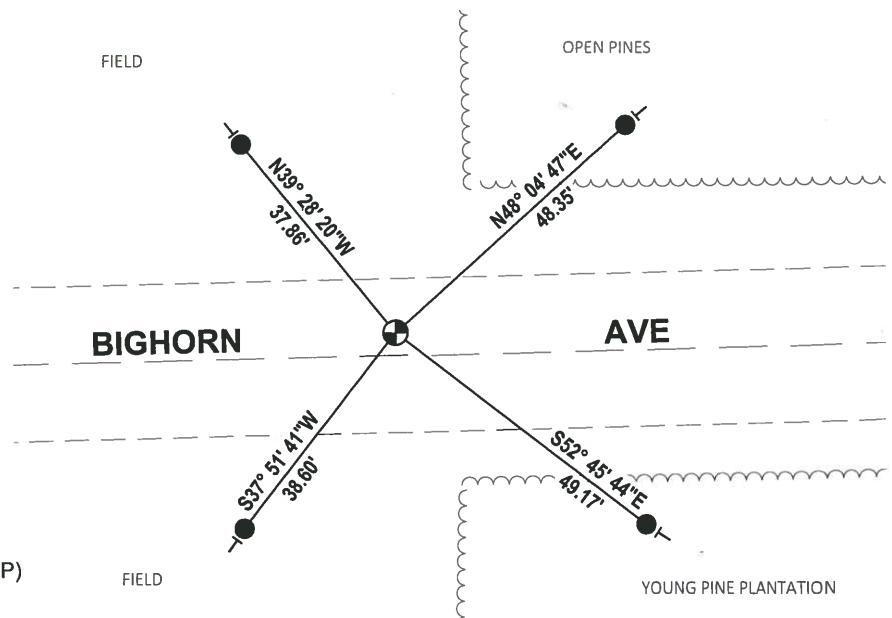
DATA SHOWN HERE ON THIS TIE SHEET IS CORRECT AND COMPLETE TO THE BEST OF MY KNOWLEDGE AND BELIEF.

PROFESSIONAL LAND SURVEYOR

DATE 6/4/19

- TIE SKETCH

NOTE: THE CORNER FALLS 3.5± NORTH OF THE CENTERLINE OF BIGHORN AVE.



- SET 3/4" x 18" IRON REBAR, 1.50#/FT
- ⊕ FOUND HARRISON MONUMENT (BROKEN-TOP)
- VINYL "T" POST

ADAMS COUNTY

Survey Monument Record

TYPE OF MONUMENT: 30" HARRISON

STATE PLANE COORDINATES: N _____

E _____

ELEVATION — M.S.L. DATUM: _____

THETA ANGLE: _____

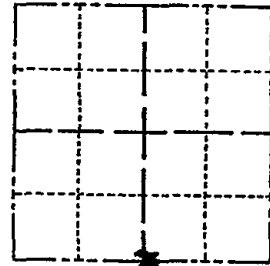
FIELD BOOK: 107 PAGE 22

CORNER NO. 212

SECTION 7

TOWN 19

RANGE 7



LOCATION
(Indicated by 'X')

SEAL:



BASIS FOR MONUMENT LOCATION

(Use reverse side if necessary)

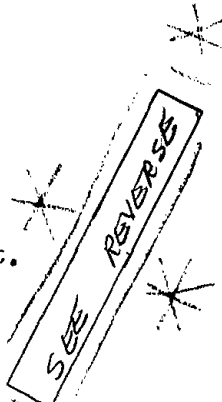
Show info such as: History of corner, with reference to Vol. and pg, dates, surveyor; exact description of monument replaced; if location computed, by taped or EDM traverse; landowner remarks, etc.

Set monument

October 19, 1972

Anthony B. Kiedrowski R.L.S 878

Excavated area with backhoe. Found charcoal stake in center of charcoal pit. Monumented stake.



CORNER O.R. 6-14-77 SK-SS
 2 NEW TIES 3-31-87 SS GR-SS

CERTIFIED CORRECT:

Anthony B. Kiedrowski
 Registered Land Surveyor

3- GONE, 2- NEW MON. TOP BROKEN OFF, 12-5-91 KZ-JG DATE: 2-22-73

TIE SKETCH 2 NEW 3-18-97 JG-SS
 1-GONE, 1-NEW, 1-03-02 TG STUMP
 2-GONE, 4-REMAIN
 (Show at least four ties) 9-21-07-JG

STUMP
 NAIL & WASHER
 10" DOOR IN PINE
 CONDITION 10" JACK 1BT
 DEAD
 10" COTTONWOOD 97 62-12
 4" Jack 78.75
 Pine 1BT 63.80
 GONE

5" BACK OAK
 (NO TIES, STN)
 3-31-87

NEW
 6" JACK
 PINE 1BT
 6" J. PINE 197
 94.35
 62.90
 6-31-87

2 BIGHORN AVE.

10" WOOD 1BT
 GONE 52.85
 GONE 40.25
 38.75
 NAIL & WASHER
 IN PINE
 5" DOOR 1BT
 PINE PLANTATION 4" DOOR 1BT
 GONE 1BT

76.20
 60.72
 GONE
 8" NORWAY
 NAIL & WASHER
 IN TIES
 6" DOOR 1BT
 GONE

R

