

08 SECTION 19 TOWN 07 RANGE

ADAMS COUNTY

COUNTY CORNER NO: 45
ROMPORTOL ID: 41907080000

PUBLIC LAND SURVEY MONUMENT RECORD

TYPE OF MONUMENT: HARRISON (BROKEN-TOP)
ADAMS COUNTY COORDINATES, NAD 83 (1907)

N. 277237.421

E. 567455.755

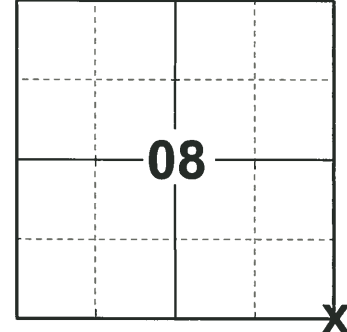
ELEVATION- - - - DATUM - - - -

FIELD WORK DATE: 05/06/2019

BASIS FOR MONUMENT LOCATION

1974 - PLS 878 EXCAVATED WITH BACKHOE. FOUND POINT FROM CHARRED STAKE. MONUMENTED SAME.

2019 - PLS 2675 FOUND HARRISON (BROKEN-TOP) 4" BELOW THE ROAD SURFACE, 1 WITNESS AND 1 TIE. THE MONUMENT AGREES WITH THE EXISTING WITNESS AND TIE. ACCEPTED THE HARRISON (BROKEN-TOP) AS THE CORNER LOCATION. SET 3 NEW TIES AND MEASURED TO THE EXISTING WITNESS AND TIE.



LOCATION

(INDICATE CORNER BY "X")

SEAL:



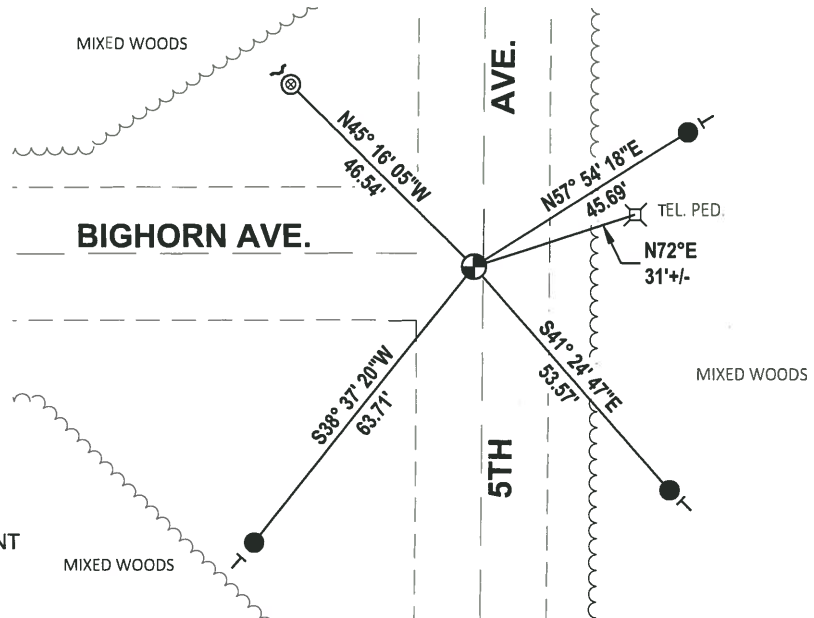
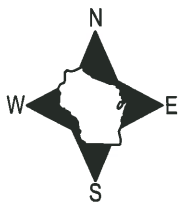
DATA SHOWN HERE ON THIS TIE SHEET IS CORRECT AND COMPLETE TO THE BEST OF MY KNOWLEDGE AND BELIEF.

PROFESSIONAL LAND SURVEYOR

DATE 6/4/19

- TIE SKETCH

NOTE: THE CORNER LANDS 2± WEST OF 5TH AVE. CENTERLINE AND 3± SOUTH OF BIGHORN AVE. CENTERLINE.



- SET 3/4" x 18" IRON REBAR, 1.50#/FT
- ⊙ FOUND 1-1/2" O.D. IRON PIPE
- ⊕ FOUND HARRISON (BROKEN-TOP) MONUMENT
- ┌ STEEL FENCE POST
- └ VINYL "T" POST

ADAMS COUNTY

Survey Monument Record

TYPE OF MONUMENT: Harrison Standard

STATE PLANE COORDINATES: N _____

E _____

ELEVATION — M.S.L. DATUM: _____

THETA ANGLE: _____

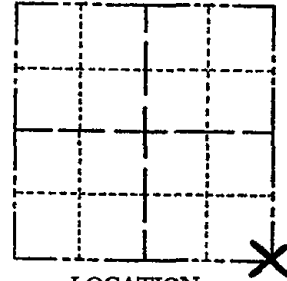
FIELD BOOK: _____ PAGE _____

CORNER NO. 412 ⁽⁴⁵⁾

SECTION 8

TOWN 19

RANGE 7



LOCATION
(Indicated by 'X')

SEAL:

BASIS FOR MONUMENT LOCATION

(Use reverse side if necessary)

Show info such as: History of corner, with reference to Vol. and pg, dates, surveyor; exact description of monument replaced; if location computed, by taped or EDM traverse; landowner remarks, etc.

Excavated with backhoe. Found point from charred stake. Monumented same.



CORNER O.K. 6-14-77 SK-SS
 " " 3-18-82 GR-SS
 " " 3-30-87 GR-SS
 " " 1-8-92 KZ-JG
 1-NEW, 1-GONE 3-18-97 JG-SS
 OK 1-03-02 JG

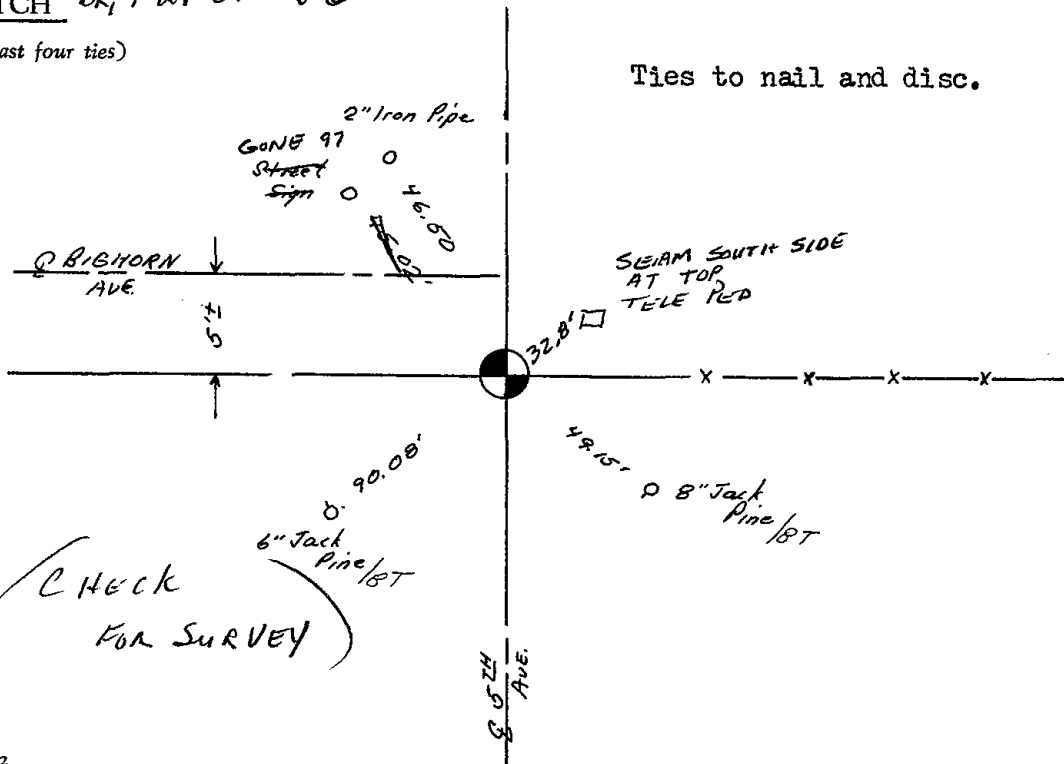
CERTIFIED CORRECT:

Anthony B. Kiedrowski
 Registered Land Surveyor
 6/6/74

DATE: _____

TIE SKETCH OK, 9-24-07 - JG

(Show at least four ties)



CHECK FOR SURVEY