

09 SECTION 19 TOWN 07 RANGE

ADAMS COUNTY

COUNTY CORNER NO: 47
ROMPORTOL ID: 41907090000

PUBLIC LAND SURVEY MONUMENT RECORD

TYPE OF MONUMENT: HARRISON (BROKEN-TOP)
ADAMS COUNTY COORDINATES, NAD 83 (1907)

N. 277214.701

E. 572728.749

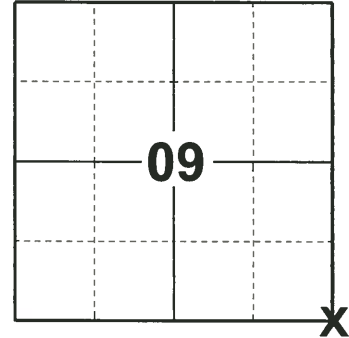
ELEVATION- - - - - DATUM - - - - -

FIELD WORK DATE: 05/02/2019

BASIS FOR MONUMENT LOCATION

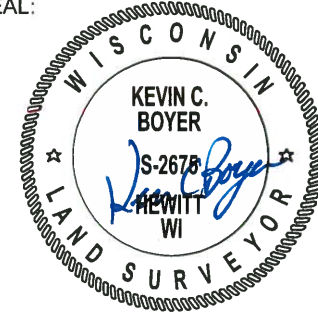
1975 - PLS 1103 RAN EDM/TRANSIT TRAVERSE AROUND SECTIONS 1, 2, 3, 10, 11, 12,13, 14, 15, AND 24 TO DETERMINE SEARCH AREAS FOR INVESTIGATION. NO EVIDENCE OF THE ORIGINAL CORNER OR ANY REMONUMENTATION WAS FOUND. RELOCATED CORNER BY RETRACING A SURVEY DONE BY DAVID R. CHENEY, S-45, IN THE SOUTHEAST QUARTER OF THE NORTHEAST QUARTER OF SECTION 16.

2019 - PLS 2675 FOUND HARRISON (BROKEN-TOP) 4" BELOW THE ROAD SURFACE AND 2 TIES. THE MONUMENT AGREES WITH BOTH TIES. ACCEPTED THE HARRISON (BROKEN-TOP) AS THE CORNER LOCATION. SET 2 NEW TIES AND MEASURED TO THE EXISTING TIES.



LOCATION
(INDICATE CORNER BY "X")

SEAL:



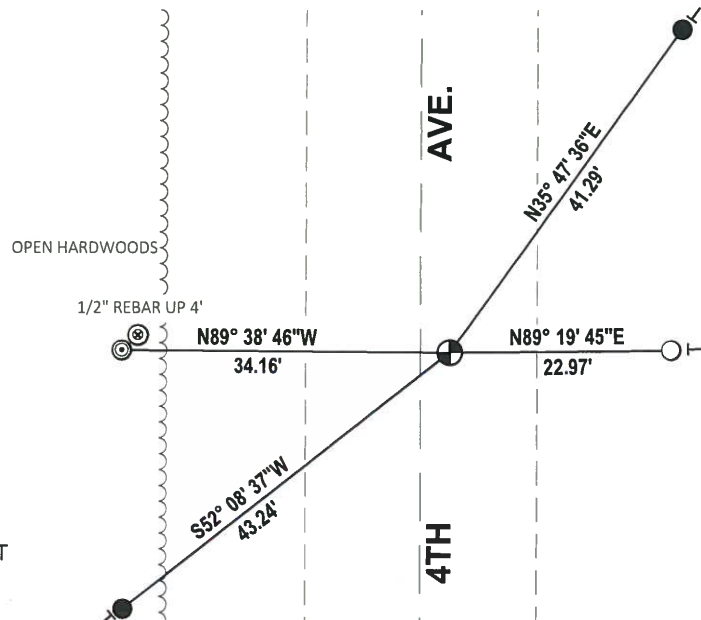
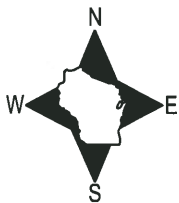
DATA SHOWN HERE ON THIS TIE SHEET IS CORRECT AND COMPLETE TO THE BEST OF MY KNOWLEDGE AND BELIEF.

PROFESSIONAL LAND SURVEYOR

DATE 6/4/19

- TIE SKETCH

NOTE: THE CORNER LANDS ±2.5' EAST OF 4TH AVE. CENTERLINE.



- SET 3/4" x 18" IRON REBAR, 1.50#/FT
- ⊙ FOUND 2-3/8" O.D. IRON PIPE
- ⊕ FOUND HARRISON (BROKEN-TOP) MONUMENT
- └ VINYL "T" POST

FIELD

ADAMS COUNTY

Survey Monument Record

TYPE OF MONUMENT: Standard Harrison

STATE PLANE COORDINATES: N _____

E _____

ELEVATION — M.S.L. DATUM: _____

THETA ANGLE: _____

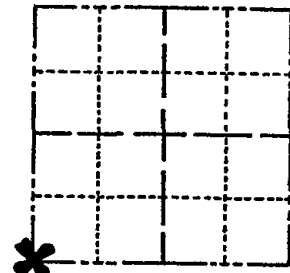
FIELD BOOK: _____ PAGE _____

CORNER NO. 827 (47)

SECTION 10

TOWN 19

RANGE 7



LOCATION
(Indicated by 'X')

SEAL:

BASIS FOR MONUMENT LOCATION

(Use reverse side if necessary)

Show info such as: History of corner, with reference to Vol. and pg, dates, surveyor; exact description of monument replaced; if location computed, by taped or EDM traverse; landowner remarks, etc.

Ran EDM/transit traverse around Sections 1, 2, 3, 10, 11, 12, 13, 14, 15, and 24 to determine the search area for investigation.

No evidence of the original corner or any remonumentation was found.

Relocated corner by retracing a survey done by David R. Cheney, S-45, in the Southeast Quarter of the Northeast Quarter of Section 16.



CORNER	O.K.	6-14-77	SK-55		
"	"	ALL NEW TIES	3-18-82	GR-55	
"	"	3-30-87	GR-55		
1-NEW	COR OK	1-8-92	KZ-JG		
"	"	3-18-91	JG-55		

CERTIFIED CORRECT:

Dale C. Hagen

Registered Land Surveyor

DATE: December 1975

TIE SKETCH 2-NEW 1-03-02 JG "DEAD" OK, 9-24-07-JG

(Show at least four ties)

NOTE

Ties in trees and posts to nail in disc.

