

12 SECTION 19 TOWN 07 RANGE

ADAMS COUNTY

COUNTY CORNER NO: 52
ROMPORTOL ID: 41907120020

PUBLIC LAND SURVEY MONUMENT RECORD

TYPE OF MONUMENT: HARRISON (BROKEN-TOP)
ADAMS COUNTY COORDINATES, NAD 83 (1907)

N. 277215.635

E. 585933.652

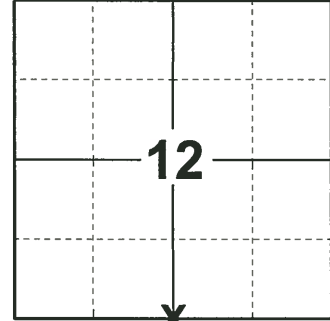
ELEVATION- - - - DATUM - - - -

FIELD WORK DATE: 05/02/2019

BASIS FOR MONUMENT LOCATION

1975 - PLS 1103 RAN EDM/TRANSIT TRAVERSE AROUND SECTIONS 1, 2, 3, 10, 11, 12, 13, 14, 15, AND 24 TO DETERMINE SEARCH FOR CORNERS. COULD FIND NO EVIDENCE OF THE ORIGINAL CORNER OR ANY REMONUMENTATION. SET CORNER EQUIDISTANT AND ON LINE BETWEEN THE SOUTHEAST AND THE SOUTHWEST CORNERS OF SECTION 12.

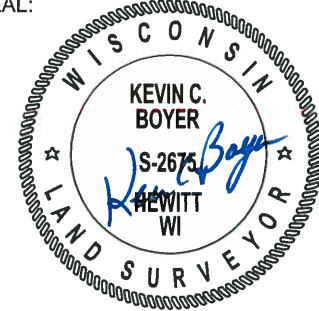
2019 - PLS 2675 FOUND HARRISON (BROKEN-TOP) 8" BELOW THE GROUND AND 1 WITNESS. THE MONUMENT AGREES WITH THE EXISTING WITNESS. ACCEPTED THE HARRISON (BROKEN-TOP) AS THE CORNER LOCATION. SET 4 NEW TIES AND MEASURED TO THE EXISTING WITNESS.



LOCATION

(INDICATE CORNER BY "X")

SEAL:



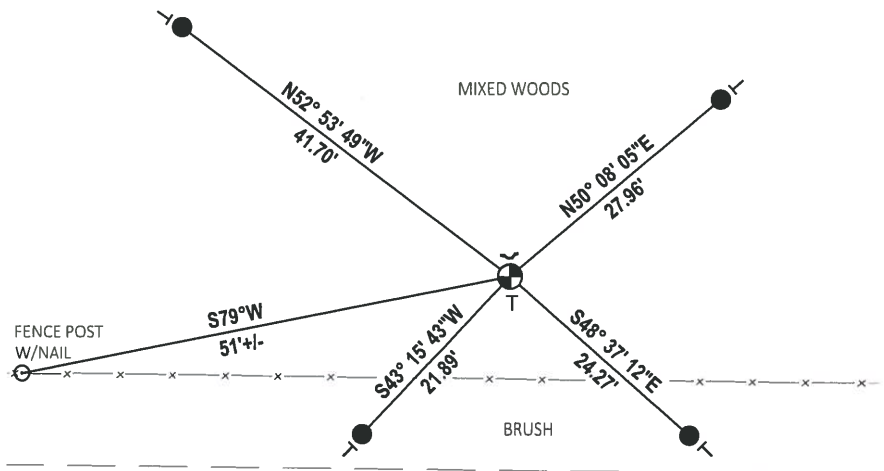
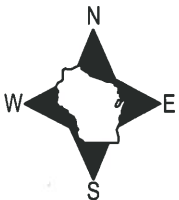
DATA SHOWN HERE ON THIS TIE SHEET IS CORRECT AND COMPLETE TO THE BEST OF MY KNOWLEDGE AND BELIEF.

PROFESSIONAL LAND SURVEYOR

DATE 6/4/19

TIE SKETCH

NOTE: THE CORNER LANDS ±10' NORTH OF THE FENCE LINE.



- SET 3/4" x 18" IRON REBAR, 1.50#/FT
- ⊕ FOUND HARRISON (BROKEN-TOP) MONUMENT
- ┘ STEEL FENCE POST
- └ VINYL "T" POST

ADAMS COUNTY

Survey Monument Record

TYPE OF MONUMENT: Harrison Monument

STATE PLANE COORDINATES: N _____

E _____

ELEVATION — M.S.L. DATUM: _____

THETA ANGLE: _____

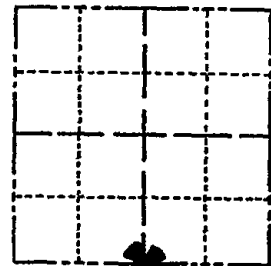
FIELD BOOK: _____ PAGE _____

CORNER NO. 813

SECTION 12

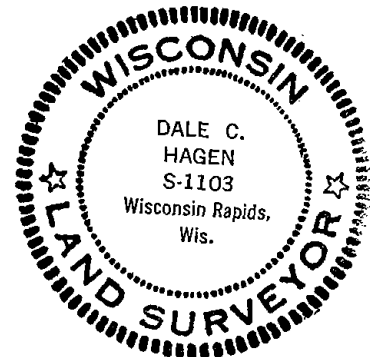
TOWN 19

RANGE 7



LOCATION (Indicated by 'X')

SEAL:



BASIS FOR MONUMENT LOCATION

(Use reverse side if necessary)

Show info such as: History of corner, with reference to Vol. and pg, dates, surveyor; exact description of monument replaced; if location computed, by taped or EDM traverse; landowner remarks, etc.

Ran EDM/transit traverse around Sections 1, 2, 3, 10, 11, 12, 13, 14, 15, and 24 to determine search for corners.

Could find no evidence of the original corner or any remonumentation.

Set corner equidistant and on line between the Southeast and the Southwest corners of Section 12.

CORNER O.K. 6-15-77 SK-SS
" " 3-18-82 GR-SS
" " 3-31-87 SS
1-GONE, 1-NEW TOP BROKEN OFF H.A.R. MONT. BOTTOM OK
6-24-92 JG

CERTIFIED CORRECT:

Dale C. Hagen
Registered Land Surveyor

DATE: Nov. 5, 1975

TIE SKETCH CORNER OK 1-30-02 JG
" " 02-15-07

(Show at least four ties)

NOTE:

Ties in trees to nail in disc.

