

ADAMS COUNTY

Survey Monument Record

TYPE OF MONUMENT: Harrison Monument

STATE PLANE COORDINATES: N \_\_\_\_\_

E \_\_\_\_\_

ELEVATION — M.S.L. DATUM: \_\_\_\_\_

THETA ANGLE: \_\_\_\_\_

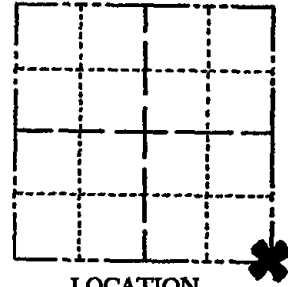
FIELD BOOK: \_\_\_\_\_ PAGE \_\_\_\_\_

CORNER NO. 812

SECTION 12

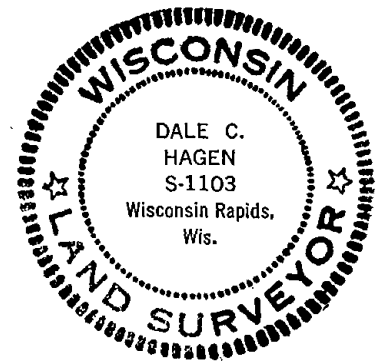
TOWN 19

RANGE 7



LOCATION  
(Indicated by 'X')

SEAL:



BASIS FOR MONUMENT LOCATION

(Use reverse side if necessary)

Show info such as: History of corner, with reference to Vol. and pg. dates, surveyor; exact description of monument replaced; if location computed, by taped or EDM traverse; landowner remarks, etc.

traverse

Ran EDM/transit around Sections 1, 2, 3, 10, 11, 12, 13, 14, 15 and 24 to determine search areas for corners.

Excavation with back-hoe by A. B. Kiedrowski, County Surveyor, yielded no evidence of the corner or any remonumentation.

Set corner proportionally and on line between the East Quarter corner of Section 12 and the Southeast Corner of Section 13.

CORNER O.K. 4-26-77 GR-SS  
" " 3-18-82 GR-SS  
2 NEW TIES 3-18-87 SS  
COR OK 1-8-92 KZ-JG

CERTIFIED CORRECT

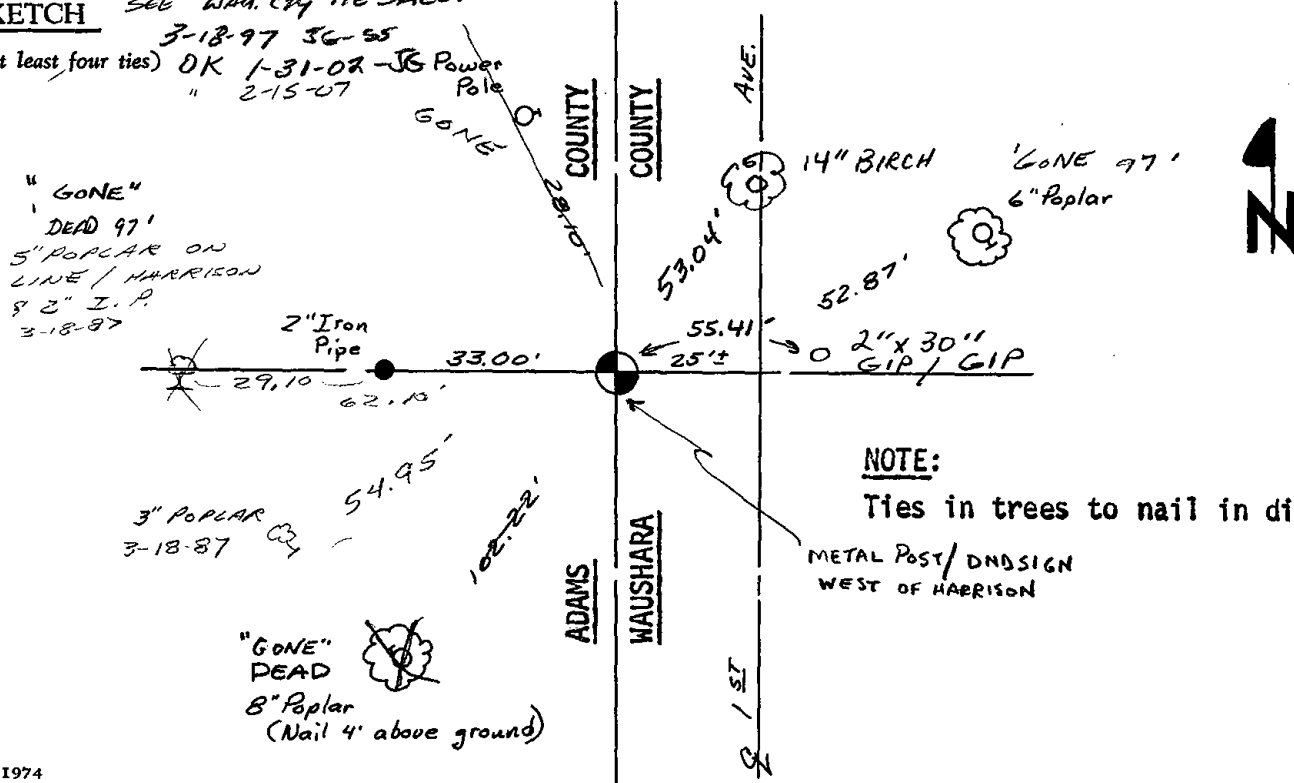
*Dale C. Hagen*  
Registered Land Surveyor

DATE: Nov. 5, 1975

TIE SKETCH

SEE WAU. CNTY TIE SHEET

(Show at least four ties) 3-18-97 36-SS  
OK 1-31-02 - JG Power Pole  
" 2-15-07



NOTE:

Ties in trees to nail in disc.

METAL POST/DND SIGN  
WEST OF HARRISON

STATE OF WISCONSIN )  
WAUSHARA COUNTY ) SS

I, LARRY E. SCHADLER, do hereby certify that on the 2<sup>ND</sup> day of SEP, 1988, I found (evidence) (no evidence) of the SW corner of SECTION 7, T 19 N, R 8 E, Fourth Principal Meridian, and I re-established said corner according to the Wisconsin Statutes as shown and described hereon.

Dated this 26<sup>th</sup> day of SEP, 1988

Larry E. Schadler  
Waushara County Surveyor

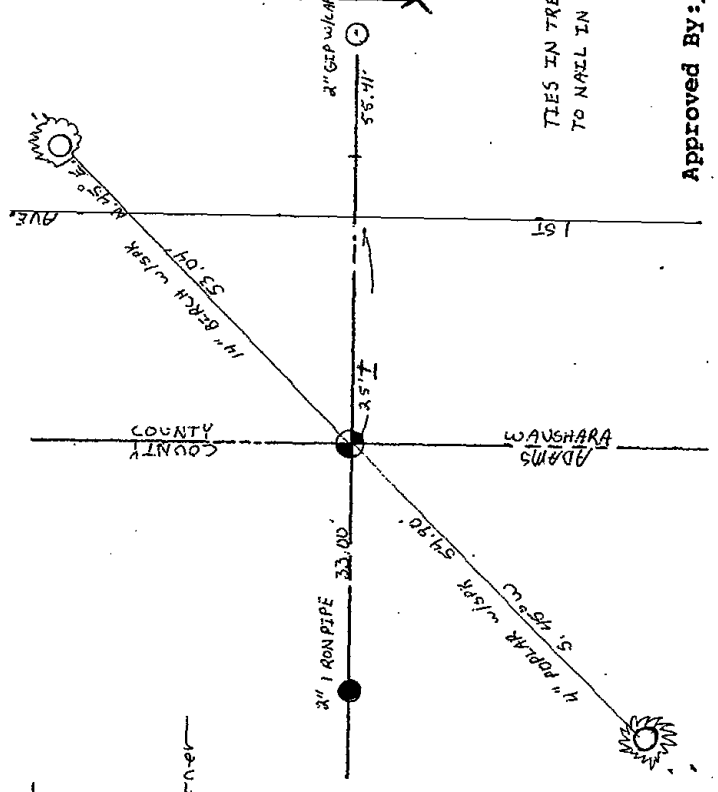
Procedure:  
Retired and Re-marked corner

SEE BACK OF PAGE FOR  
MAINTENANCE RECORDS

WAUSHARA COUNTY  
CERTIFIED LAND CORNER  
Description of corner evidence found:  
HARRISON MONUMENT AND TIE  
AS PER HAGEN TIE SHEET

No. 50  
Witnesses to corner location:  
DAN ELLINGER  
SCOTT SCHADLER

Section 7



TIES IN TREES  
TO NAIL IN DESC.

T. 19 N R 8 E  
WISCONSIN

Approved By: \_\_\_\_\_