

18 SECTION    19 TOWN    07 RANGE

# ADAMS COUNTY

COUNTY CORNER NO: 55  
 ROMPORTOL ID: 41907182000

## PUBLIC LAND SURVEY MONUMENT RECORD

TYPE OF MONUMENT: HARRISON (BROKEN-TOP)  
 ADAMS COUNTY COORDINATES, NAD 83 (2007)

N. 274535.431  
 E. 562162.752

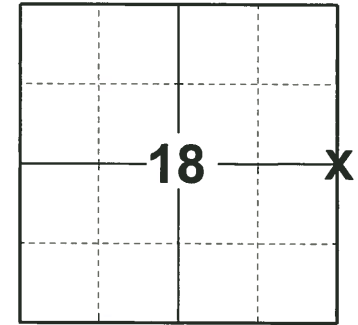
ELEVATION- - - - - DATUM - - - - -

FIELD WORK DATE: 05/15/2019

### BASIS FOR MONUMENT LOCATION

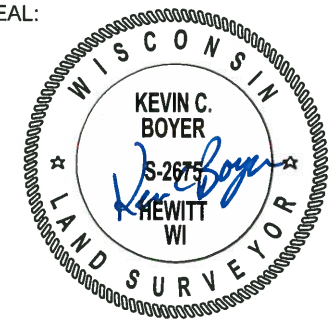
1977 - PLS 878 EXCAVATED WITH BACKHOE, FOUND NOTHING. SET ON LINE BETWEEN SECTION CORNERS, OPPOSITE FENCE LINE TO EAST. POSSESSION LINES NORTH AND SOUTH OF HERE INDICATE THIS AS THE BEST POSSIBLE LOCATION. A HALF WAY SPLIT WOULD NOT MATCH.

209 - PLS 2675 FOUND HARRISON (BROKEN-TOP) 4" BELOW THE ROAD SURFACE, 1 TIE, AND 2 WITNESSES. THE MONUMENT AGREES WITH THE EXISTING TIE AND WITNESSES. ACCEPTED THE HARRISON (BROKEN-TOP) AS THE CORNER LOCATION. SET 3 NEW TIES AND MEASURED TO THE EXISTING TIE AND WITNESSES.



**LOCATION**  
 (INDICATE CORNER BY "X")

SEAL:



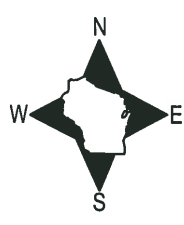
DATA SHOWN HERE ON THIS TIE SHEET IS CORRECT AND COMPLETE TO THE BEST OF MY KNOWLEDGE AND BELIEF.

PROFESSIONAL LAND SURVEYOR

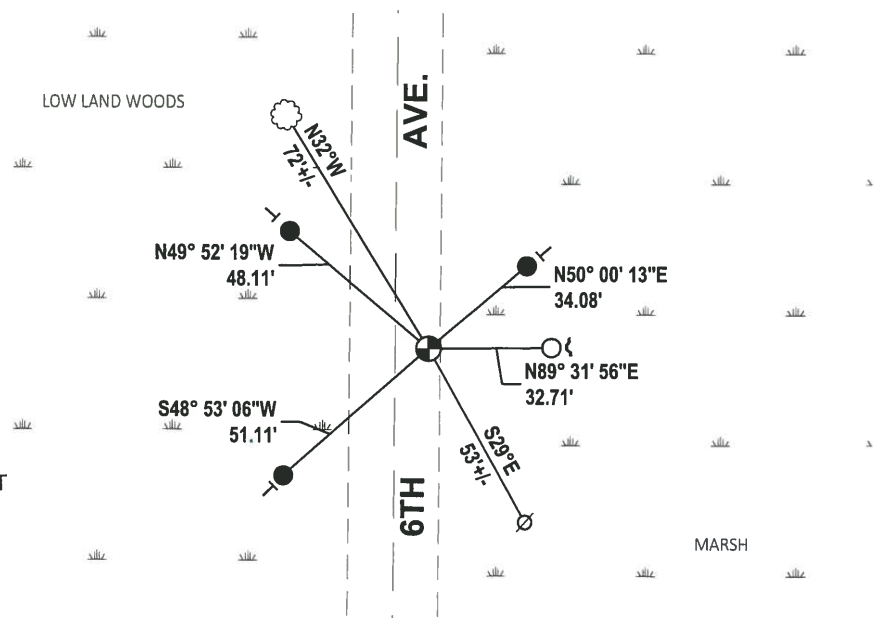
DATE 6/4/19

### - TIE SKETCH

NOTE: THE CORNER LANDS 8.5± EAST OF 6TH AVE. CENTERLINE.



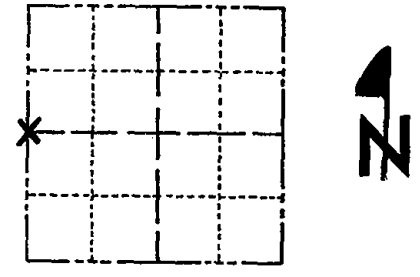
- SET 3/4" x 18" IRON REBAR, 1.50#/FT
- FOUND 3/4" IRON ROD
- ⊕ FOUND HARRISON (BROKEN-TOP) MONUMENT
- ∅ WITNESS POWER POLE
- ┌ STEEL FENCE POST
- └ VINYL "T" POST
- ☁ WITNESS TREE



# Government Land Corner Certificate

ADAMS County  
 TYPE OF MONUMENT: HARRISON  
 STATE PLANE COORDINATES: N \_\_\_\_\_  
 E \_\_\_\_\_  
 ELEVATION — M.S.L. DATUM: \_\_\_\_\_  
 THETA ANGLE: \_\_\_\_\_  
 FIELD BOOK: 57 PAGE 14  
 DRAWN BY: LANCE HABECK

CORNER NO. 55  
 SECTION 17  
 TOWN 19 N  
 RANGE 7 E



LOCATION  
 (Indicated by 'X')

## BASIS FOR MONUMENT LOCATION

Show info such as: History of corner, with reference to Vol. and pg., dates, surveyor; exact description of monument replaced; if location computed, by taped or EDM traverse; landowner remarks, etc. (Use reverse side if necessary)

Excavated with backhoe, found nothing. Set on line between section corners, opposite fence line to east. Possession lines north and south of here indicate this as the best possible location. A half way split would not match.

SEAL:



DATA SHOWN HERE ON  
 CERTIFIED CORRECT:

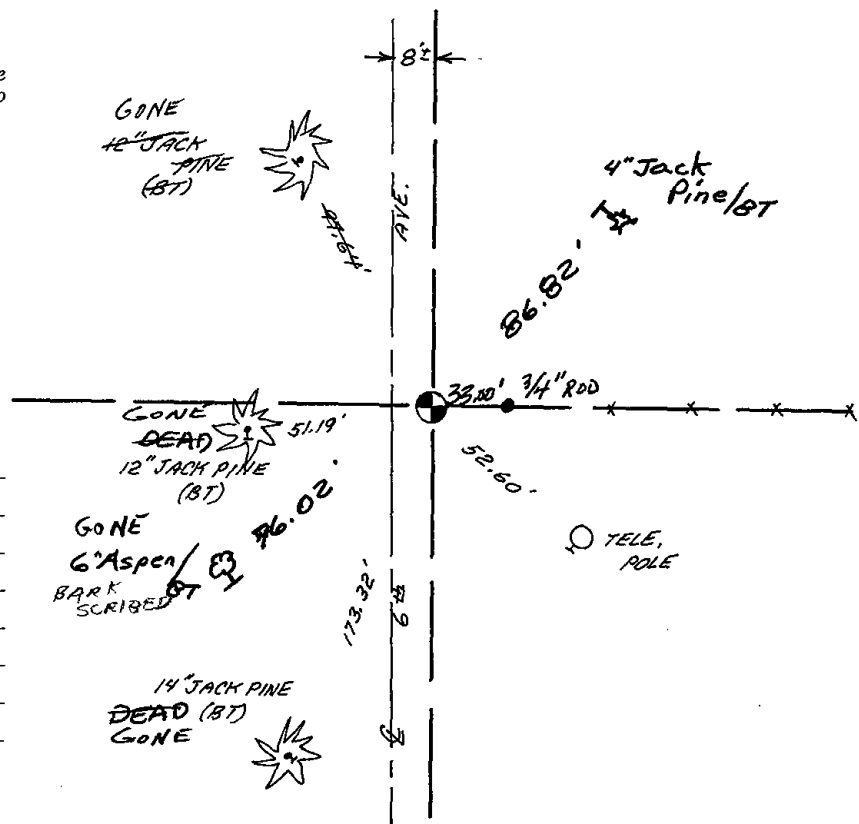
*Anthony B. Kiedrowski*  
 Registered Land Surveyor

DATE: 8/11/77

## TIE SKETCH

Show at least four ties, also fence lines, roads, topo, size and type of witness trees' and if off road - best way to arrive at corner.

Ties to nail and bottle cap.



## MAINTENANCE RECORD

Date	Init.	Remarks
3-18-82	GR-SS	Mon. OK NEW TIES
3-31-87	SS	OK
12-5-91	KE-SG	OK
3-7-97	JG-SS	2-GONE, 1-NEW, MON. OK
1-04-02	JG	1-GONE
9-24-07	JG	1-GONE