

17 SECTION 19 TOWN 07 RANGE

# ADAMS COUNTY

COUNTY CORNER NO: 56  
ROMPORTOL ID: 41907172000

## PUBLIC LAND SURVEY MONUMENT RECORD

TYPE OF MONUMENT: HARRISON  
ADAMS COUNTY COORDINATES, NAD 83 (2007)

N. 274564.623

E. 567450.434

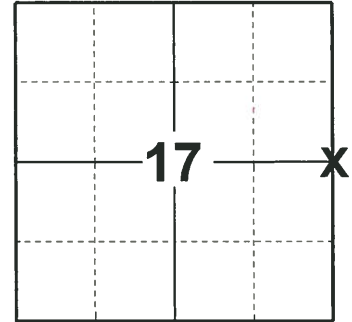
ELEVATION- - - - DATUM - - - -

FIELD WORK DATE: 05/13/2019

### BASIS FOR MONUMENT LOCATION

1978 - PLS 878 SET MONUMENT EQUIDISTANT AND ON LINE BETWEEN ADJACENT SECTION CORNERS. EXCAVATED WITH BACKHOE AND FOUND NOTHING.

2019 - PLS 2675 FOUND HARRISON 6" BELOW THE ROAD SURFACE AND 1 TIE. THE MONUMENT AGREES WITH THE EXISTING TIE. ACCEPTED THE HARRISON AS THE CORNER LOCATION. SET 3 NEW TIES AND MEASURED TO THE EXISTING TIE.



LOCATION  
(INDICATE CORNER BY "X")

SEAL:



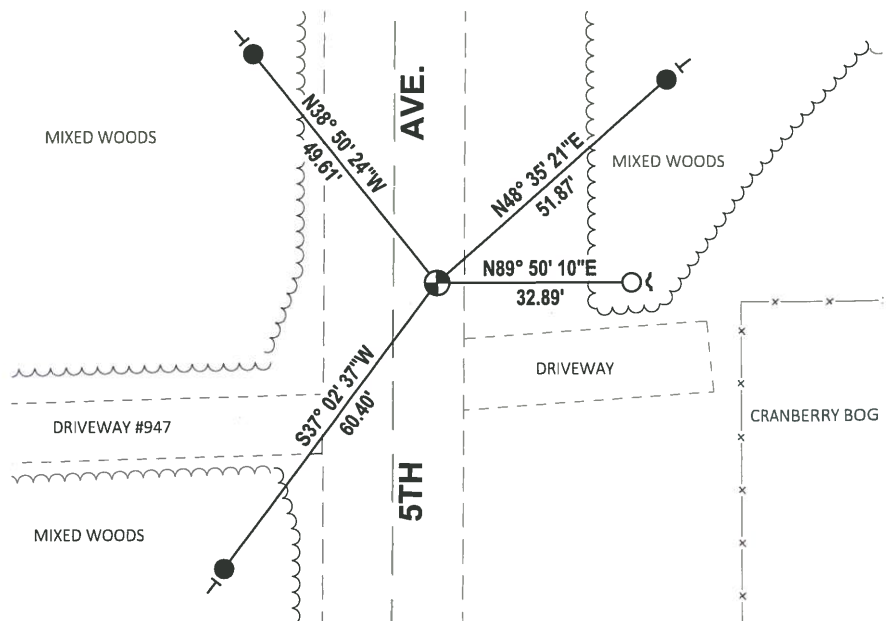
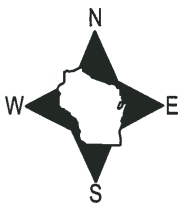
DATA SHOWN HERE ON THIS TIE SHEET IS CORRECT AND COMPLETE TO THE BEST OF MY KNOWLEDGE AND BELIEF.

PROFESSIONAL LAND SURVEYOR

DATE 6/4/19

### TIE SKETCH

NOTE: THE CORNER LANDS 7.5'± EAST OF 5TH AVE. CENTERLINE.

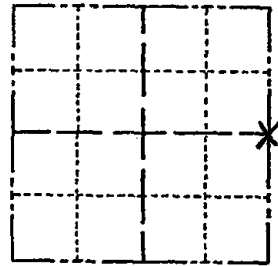


- SET 3/4" x 18" IRON REBAR, 1.50#/FT
- FOUND 3/4" IRON ROD
- ⊕ FOUND HARRISON MONUMENT
- ┘ STEEL FENCE POST
- VINYL "T" POST

# Government Land Corner Certificate

ADAMS County  
 TYPE OF MONUMENT: HARRISON  
 STATE PLANE COORDINATES: N \_\_\_\_\_  
 E \_\_\_\_\_  
 ELEVATION — M.S.L. DATUM: \_\_\_\_\_  
 THETA ANGLE: \_\_\_\_\_  
 FIELD BOOK: 57 PAGE 15  
 DRAWN BY: LANCE HABECK

CORNER NO. 56  
 SECTION 17  
 TOWN 19 N  
 RANGE 7 E



LOCATION  
(Indicated by 'X')

## BASIS FOR MONUMENT LOCATION

Show info such as: History of corner, with reference to Vol. and pg., dates, surveyor; exact description of monument replaced; if location computed, by taped or EDM traverse; landowner remarks, etc. (Use reverse side if necessary)

Set monument equidistant and on line between adjacent section corners.  
 Excavated with Backhoe.  
 Found nothing.

SEAL:



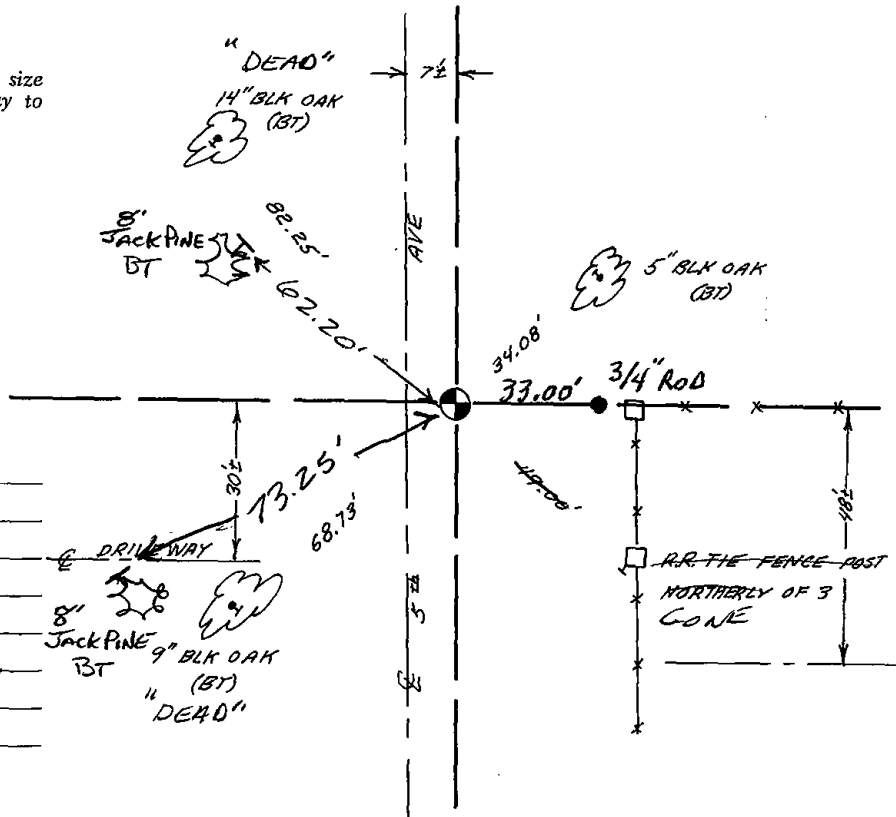
DATA SHOWN HERE ON  
CERTIFIED CORRECT:

Anthony B. Kiedrowski  
Registered Land Surveyor

DATE: 3/6/78

## TIE SKETCH

Show at least four ties, also fence lines, roads, topo, size and type of witness trees' and if off road - best way to arrive at corner.



## MAINTENANCE RECORD

Date	Init.	Remarks
8-23-82	PK-SS	All O.K.
3-30-87	GR-SS	" "
1-8-92	KZ JG	1-GONE, COL OK
3-18-97	JG-SS	OK
1-04-02	JG	1-NEW
9-24-07	JG	2-NEW, MON. OK