

16 SECTION 19 TOWN 07 RANGE

ADAMS COUNTY

COUNTY CORNER NO: 57
 ROMPORTOL ID: 41907162000

PUBLIC LAND SURVEY MONUMENT RECORD

TYPE OF MONUMENT: HARRISON (BROKEN-TOP)
 ADAMS COUNTY COORDINATES, NAD 83 (2007)

N. 274586.628

E. 572714.527

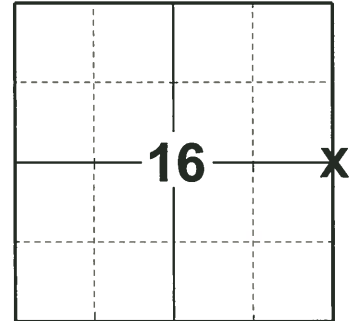
ELEVATION- - - - - DATUM - - - - -

FIELD WORK DATE: 05/13/2019

BASIS FOR MONUMENT LOCATION

1975 - PLS 1103 RAN EDM/TRANSIT TRAVERSE AROUND SECTIONS 1, 2, 3, 10, 11, 12, 13, 14, 15, AND 24 TO DETERMINE SEARCH AREAS FOR INVESTIGATION. COULD FIND NO EVIDENCE OF THE ORIGINAL CORNER OR ANY REMONUMENTATION. RELOCATED CORNER BY RETRACING SURVEY DONE BY DAVID R. CHENEY, S-45, IN SOUTHEAST QUARTER OF THE NORTHEAST QUARTER OF SECTION 16.

2019 - PLS 2675 FOUND HARRISON (BROKEN-TOP) 8" BELOW THE ROAD SURFACE AND 1 TIE. THE MONUMENT AGREES WITH THE EXISTING TIE. ACCEPTED THE HARRISON (BROKEN-TOP) AS THE CORNER LOCATION. SET 4 NEW TIES AND MEASURED TOT HE EXISTING TIE.



LOCATION
(INDICATE CORNER BY "X")

SEAL:



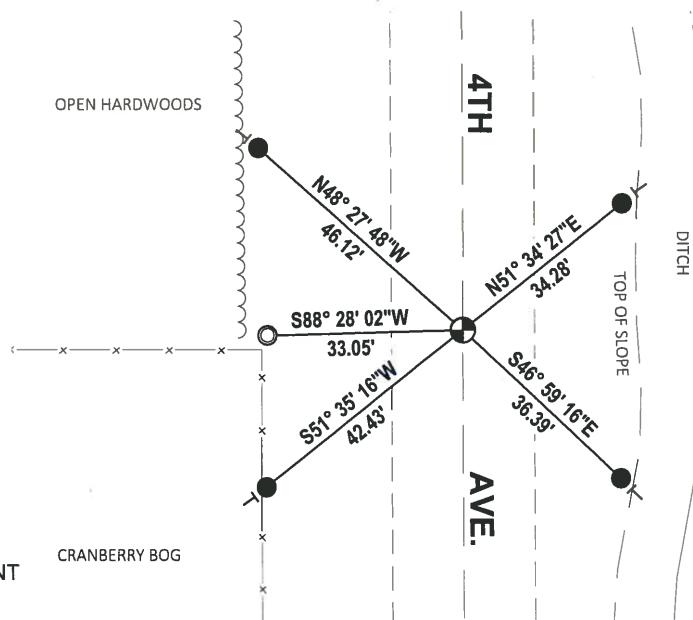
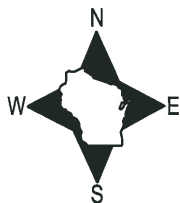
DATA SHOWN HERE ON THIS TIE SHEET IS CORRECT AND COMPLETE TO THE BEST OF MY KNOWLEDGE AND BELIEF.

PROFESSIONAL LAND SURVEYOR

DATE 6/4/19

- TIE SKETCH

NOTE: THE CORNER LANDS ON THE CENTERLINE OF 4TH AVE.



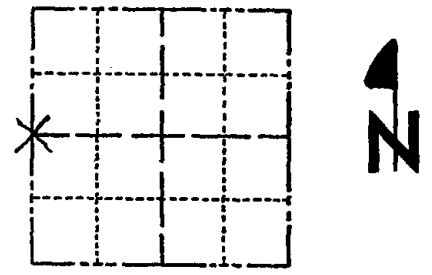
- SET 3/4" x 18" IRON REBAR, 1.50#/FT
- FOUND 1-1/4" O.D. IRON PIPE
- ⊕ FOUND HARRISON (BROKEN-TOP) MONUMENT
- VINYL "T" POST

ADAMS COUNTY

CORNER NO. 834 ⁽⁵⁷⁾
 SECTION 15
 TOWN 19
 RANGE 7

Survey Monument Record

TYPE OF MONUMENT: Standard Harrison
 STATE PLANE COORDINATES: N _____
 E _____
 ELEVATION — M.S.L. DATUM: _____
 THETA ANGLE: _____
 FIELD BOOK: _____ PAGE _____



LOCATION
(Indicated by 'X')

BASIS FOR MONUMENT LOCATION

(Use reverse side if necessary)
 Show info such as: History of corner, with reference to Vol. and pg. dates, surveyor; exact description of monument replaced; if location computed, by taped or EDM traverse; landowner remarks, etc.

Ran EDM/transit traverse around Sections 1, 2, 3, 10, 11, 12, 13, 14, 15 and 24 to determine search areas for investigation.

Could find no evidence of the original corner or any remonumentation.

Relocated corner by retracing survey done by David R, Cheney, S-45, in the Southeast Quarter of the Northeast Quarter of Section 16.

SEAL:



CORNER	O.K.	6-14-77	SK-SS
"	"	3-18-82	GR-SS
"	"	3-20-87	GR-SS
"	"	1-8-92	KZ-JG
1-GONE, 2-N&W 3-18-97 JG-SS			

CERTIFIED CORRECT:
Dale C. Hagen
 Registered Land Surveyor
 DATE: December 2, 1975

TIE SKETCH ALL OK 1-04-02 JG OK, 9-24-07 JG

(Show at least four ties)

NOTE:
 Ties in trees to nail in disc.

