

18 SECTION 19 TOWN 07 RANGE

ADAMS COUNTY

COUNTY CORNER NO: 62
ROMPORTOL ID: 41907180020

PUBLIC LAND SURVEY MONUMENT RECORD

TYPE OF MONUMENT: HARRISON
ADAMS COUNTY COORDINATES, NAD 83 (2007)

N. 271846.471

E. 559503.089

ELEVATION- - - - DATUM - - - -

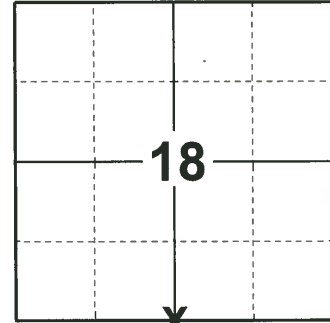
FIELD WORK DATE: 05/15/2019

BASIS FOR MONUMENT LOCATION

1977 - PLS 1103 RAN EDM/T2 TRAVERSE AROUND SECTION 19 AND MANY ADJACENT SECTIONS TO DETERMINE SEARCH AREA FOR INVESTIGATION. COULD FIND NO EVIDENCE OF THE ORIGINAL CORNER OR REMONUMENTATION THROUGH EXCAVATION WITH BACKHOE BY A.B. KIEDROWSKI, ADAMS COUNTY SURVEYOR. COULD FIND NO BEARING TREES. RELOCATED CORNER BY SINGLE PROPORTIONATE (ON LINE) MEASURE BETWEEN ADJACENT SECTION CORNERS. SET HARRISON MONUMENT ON 9-1-1977.

2000 - PLS 2281 HARRISON MONUMENT RESET AFTER COMPLETION OF COUNTY HIGHWAY C RECONSTRUCTION PROJECT. LOCATION IS BASED ON THE EXISTING MONUMENT FOUND BEFORE CONSTRUCTION BEGAN.

2019 - PLS 2675 FOUND HARRISON 4" BELOW THE ROAD SHOULDER AND 4 TIES. THE MONUMENT AGREES WITH ALL 4 TIES. ACCEPTED THE HARRISON AS THE CORNER LOCATION AND MEASURED TO THE EXISTING TIES.



LOCATION

(INDICATE CORNER BY "X")

SEAL:



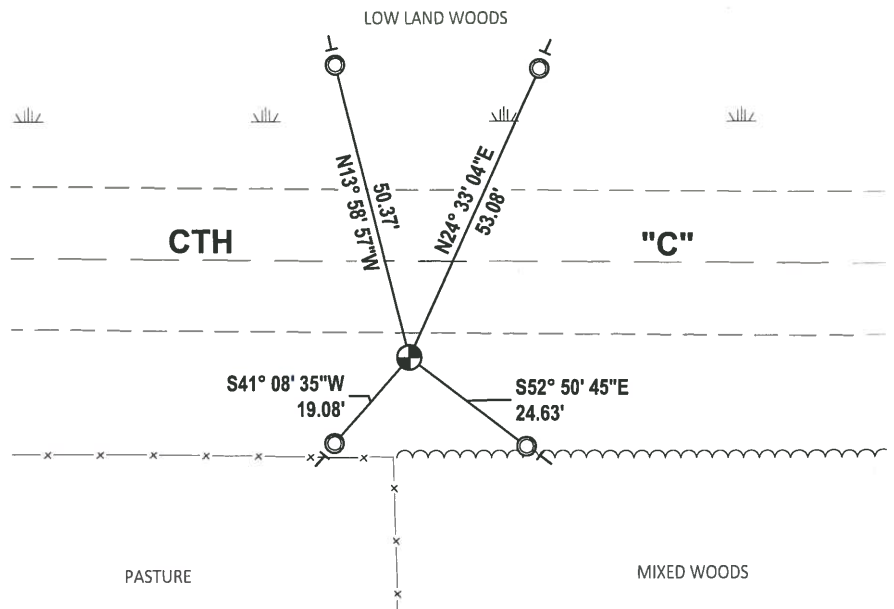
DATA SHOWN HERE ON THIS TIE SHEET IS CORRECT AND COMPLETE TO THE BEST OF MY KNOWLEDGE AND BELIEF.

PROFESSIONAL LAND SURVEYOR

DATE 6/4/19

TIE SKETCH

NOTE: THE CORNER LANDS 16'± SOUTH OF CTH "C" CENTERLINE.



- FOUND 1-1/4" O.D. IRON PIPE
- ⊕ FOUND HARRISON MONUMENT
- VINYL "T" POST

ADAMS COUNTY U.S. PUBLIC LAND SURVEY

MONUMENT LOCATION RECORD

LANDMARK BENCHMARK

CORNER IDENTITY: SOUTH QUATER CONER

STATE PLANE COORDINATE: N: _____

E: _____

ZONE: _____

ELEVATION: _____

DATUM: _____

THETA ANGLE: _____

WEATHER: SUNNY/COLD TEMPERATURE: 58° F

DATE OF SURVEY: 11/4/99

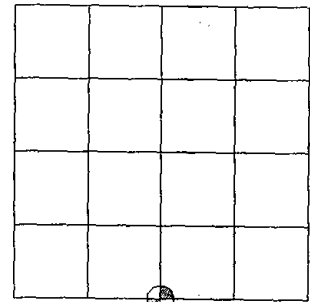
SURVEY PARTY: MARK HINTZ / CHRIS THORSON

- FOUND
- SET
- RE-SET
- RE-TIED



CORNER # 62
SECTION 18
TOWNSHIP 19 NORTH
RANGE 7 EAST

SECTION 18



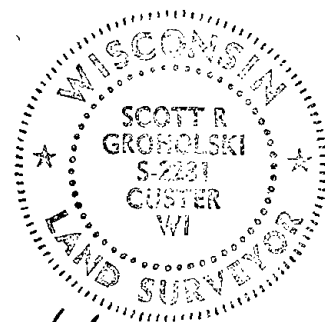
LOCATION

BASIS FOR MONUMENT LOCATION:

(DESCRIBE METHOD OF SURVEY AND CORNER AUTHENTICATION)

HARRISON MONUMENT RESET AFTER COMPLETION OF COUNTY HIGHWAY C RECONSTRUCTION PROJECT. LOCATION IS BASED ON THE EXISTING MONUMENT FOUND BEFORE CONSTRUCTION BEGAN.

SEAL



[Signature]

SCOTT GRQHOLSKI (RLS #2231)

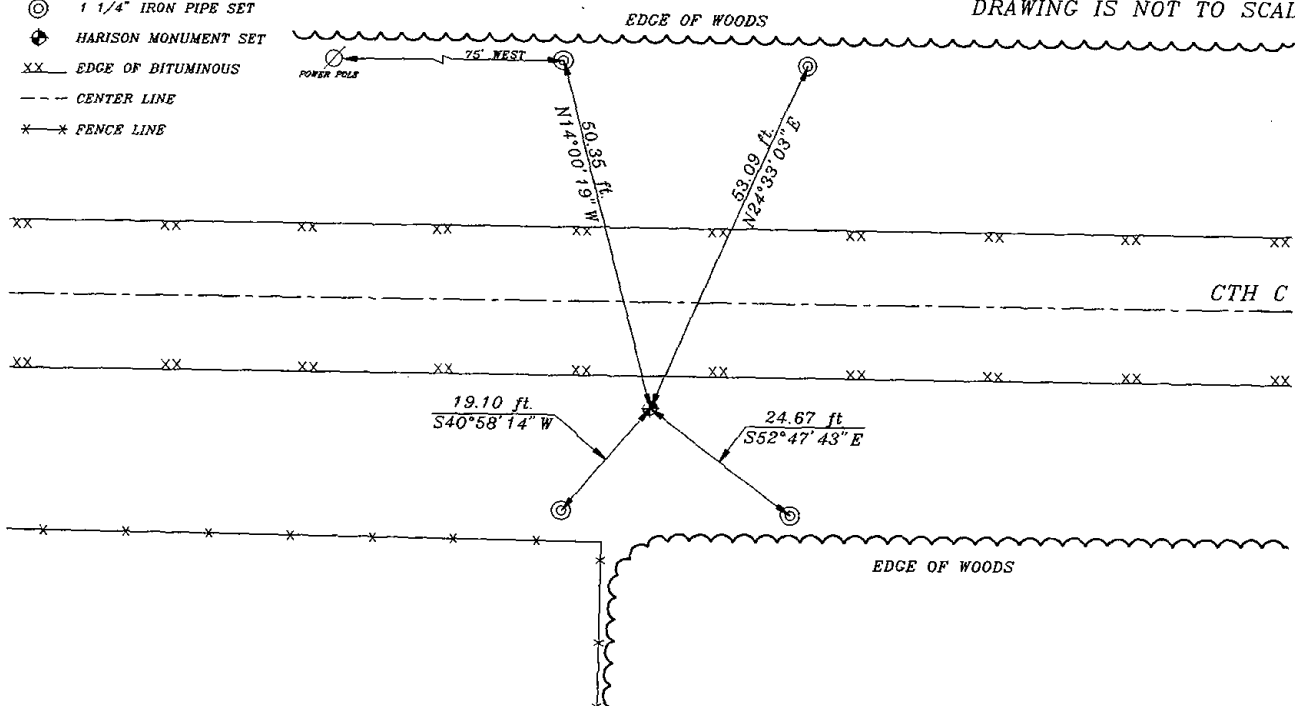
DATE 1/11/00

TIE SKETCH:

SHOW MINIMUM OF FOUR (4) HORIZONTAL TIE DISTANCES TO FIXED WITNESS MONUMENTS. DESCRIBE ALL MONUMENTS FOUND OR SET. CORRECT ALL DISTANCES SHOWN TO STANDARD TEMPERATURE OF 68° F.

LEGEND

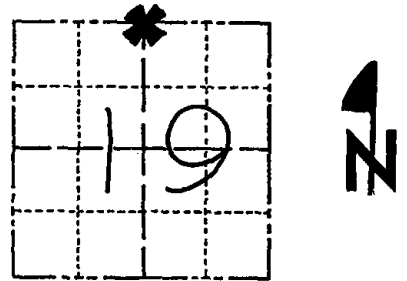
- ⊙ 1 1/4" IRON PIPE SET
- ⊕ HARRISON MONUMENT SET
- XX EDGE OF BITUMINOUS
- CENTER LINE
- * * FENCE LINE



Government Land Corner Certificate

ADAMS County
 TYPE OF MONUMENT: HARRISON STD.
 STATE PLANE COORDINATES: N _____
 E _____
 ELEVATION — M.S.L. DATUM: _____
 THETA ANGLE: _____
 FIELD BOOK: 54 PAGE 28
 DRAWN BY: SCOTT SORENSEN

CORNER NO. 62
 SECTION 19
 TOWN 19
 RANGE 7



LOCATION
(Indicated by 'X')

BASIS FOR MONUMENT LOCATION

Show info such as: History of corner, with reference to Vol. and pg., dates, surveyor; exact description of monument replaced; if location computed, by taped or EDM traverse; landowner remarks, etc. (Use reverse side if necessary)

Ran EDM/T2 traverse around Section 19 and many adjacent sections to determine search area for investigation.

Could find no evidence of the original corner or remonumentation through excavation with backhoe by Anthony B. Kiedrowski, Adams County Surveyor. Could find no bearing trees.

Relocated corner by single proportionate (on line) measure between adjacent section corners.

Set Harrisons monument on 9-1-1977.

SEAL:



DATA SHOWN HERE ON
CERTIFIED CORRECT

Dale C. Hagen
Registered Land Surveyor

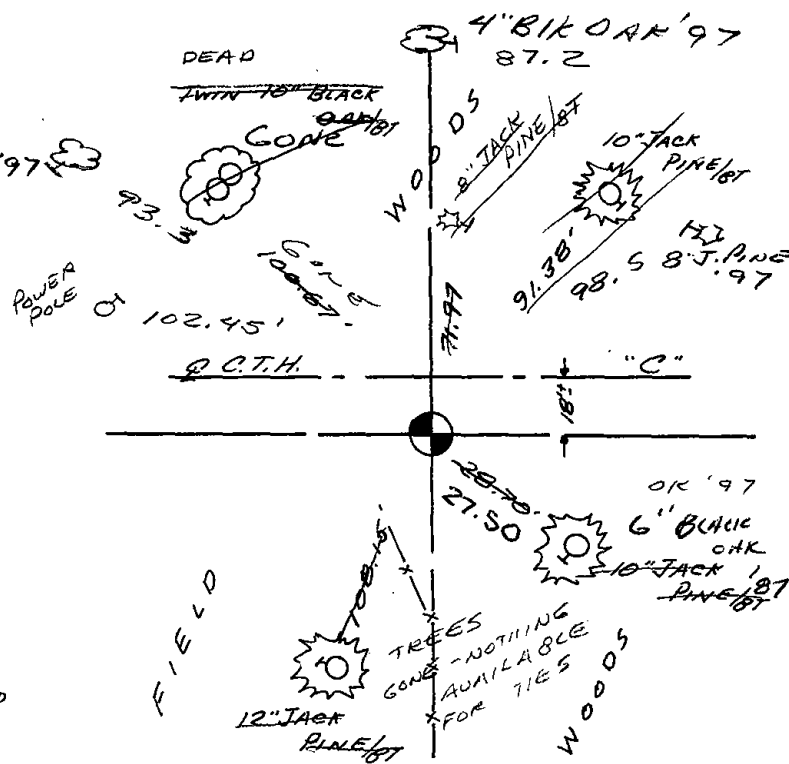
DATE: 11-2-1977

TIE SKETCH

Show at least four ties, also fence lines, roads, topo, size and type of witness trees' and if off road - best way to arrive at corner.

NOTE

Ties in trees to nail in disc.



MAINTENANCE RECORD

Date	Init.	Remarks
8-23-82	PK-SS	HAR. OK - NEW TIES
2-9-87	GR-SS	" "
12-5-91	KT-SS	" "
12-22-97	JG-SS	3 NEW TIES
SEE ATTACHED SHEET, GROHOLSKI, 1/11/00		
1-04-02	SLG	ALL OK