

16 SECTION    19 TOWN    07 RANGE

# ADAMS COUNTY

COUNTY CORNER NO: 66  
 ROMPORTOL ID: 41907160020

## PUBLIC LAND SURVEY MONUMENT RECORD

TYPE OF MONUMENT: SURVEY NAIL  
 ADAMS COUNTY COORDINATES, NAD 83 (2007)

N. 271926.140

E. 570074.070

ELEVATION- - - - - DATUM - - - - -

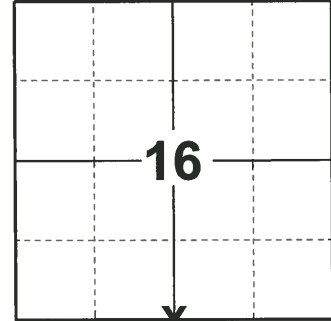
FIELD WORK DATE: 05/13/2019

### BASIS FOR MONUMENT LOCATION

1981 - PLS 878 NO RESURVEY RECORDS. DID NOT DIG BECAUSE THERE IS NO HINT OF OCCUPATION LINES IN THIS AREA. THE CORNER IS SET ON A STRAIGHT LINE EQUIDISTANT BETWEEN SECTION CORNERS.

2000 - PLS 2281 HARRISON MONUMENT RESET AFTER COMPLETION OF COUNTY HIGHWAY C RECONSTRUCTION PROJECT. LOCATION IS BASED ON THE EXISTING MONUMENT FOUND BEFORE CONSTRUCTION BEGAN.

2019 - PLS 2675 FOUND MAG NAIL IN THE ROAD SURFACE, REMOVED, FOUND NO ADDITION MONUMENTS BELOW AND 4 TIES. THE MAG NAIL LOCATION AGREES WITH ALL 4 TIES. ACCEPTED THE MAG NAIL LOCATION AS THE CORNER LOCATIONS. SET A SURVEY NAIL IN THE MAG NAIL LOCATION AND MEASURED TO THE EXISTING TIES AND A FOUND PROPERTY IRON.



**LOCATION**

(INDICATE CORNER BY "X")

SEAL:



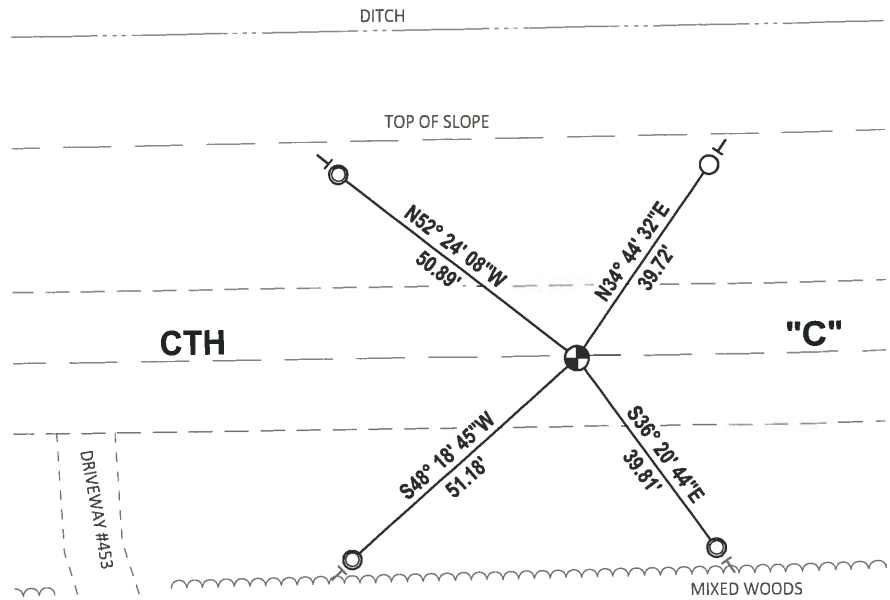
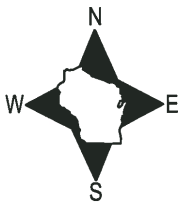
DATA SHOWN HERE ON THIS TIE SHEET IS CORRECT AND COMPLETE TO THE BEST OF MY KNOWLEDGE AND BELIEF.

PROFESSIONAL LAND SURVEYOR

DATE 6/4/19

### - TIE SKETCH

NOTE: THE CORNER LANDS .5± SOUTH OF CTH "C" CENTERLINE.



- FOUND 3/4" IRON ROD
- ⊙ FOUND 1-1/4" O.D. IRON PIPE
- SET SURVEY NAIL MONUMENT
- | VINYL "T" POST

# ADAMS COUNTY U.S. PUBLIC LAND SURVEY

## MONUMENT LOCATION RECORD

LANDMARK       BENCHMARK

CORNER IDENTITY: SOUTH QUATER CONER

STATE PLANE COORDINATE: N: \_\_\_\_\_

E: \_\_\_\_\_

ZONE: \_\_\_\_\_

ELEVATION: \_\_\_\_\_

DATUM: \_\_\_\_\_

THETA ANGLE: \_\_\_\_\_

WEATHER: SUNNY/COLD      TEMPERATURE: 58° F

DATE OF SURVEY: 11/4/99

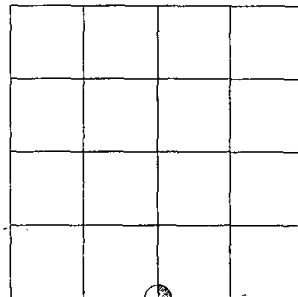
SURVEY PARTY: MARK HINTZ / CHRIS THORSON

- FOUND
- SET
- RE-SET
- RE-TIED



CORNER # 66  
 SECTION 16  
 TOWNSHIP 19 NORTH  
 RANGE 7 EAST

SECTION 16



LOCATION

### BASIS FOR MONUMENT LOCATION:

(DESCRIBE METHOD OF SURVEY AND CORNER AUTHENTICATION)

HARRISON MONUMENT RESET AFTER COMPLETION OF COUNTY HIGHWAY C RECONSTRUCTION PROJECT. LOCATION IS BASED ON THE EXISTING MONUMENT FOUND BEFORE CONSTRUCTION BEGAN.

OK, 9-24-07-JG

SEAL



*Scott R. Groholski*  
 SCOTT GROHOLSKI (RLS #2281)

DATE

1/11/00

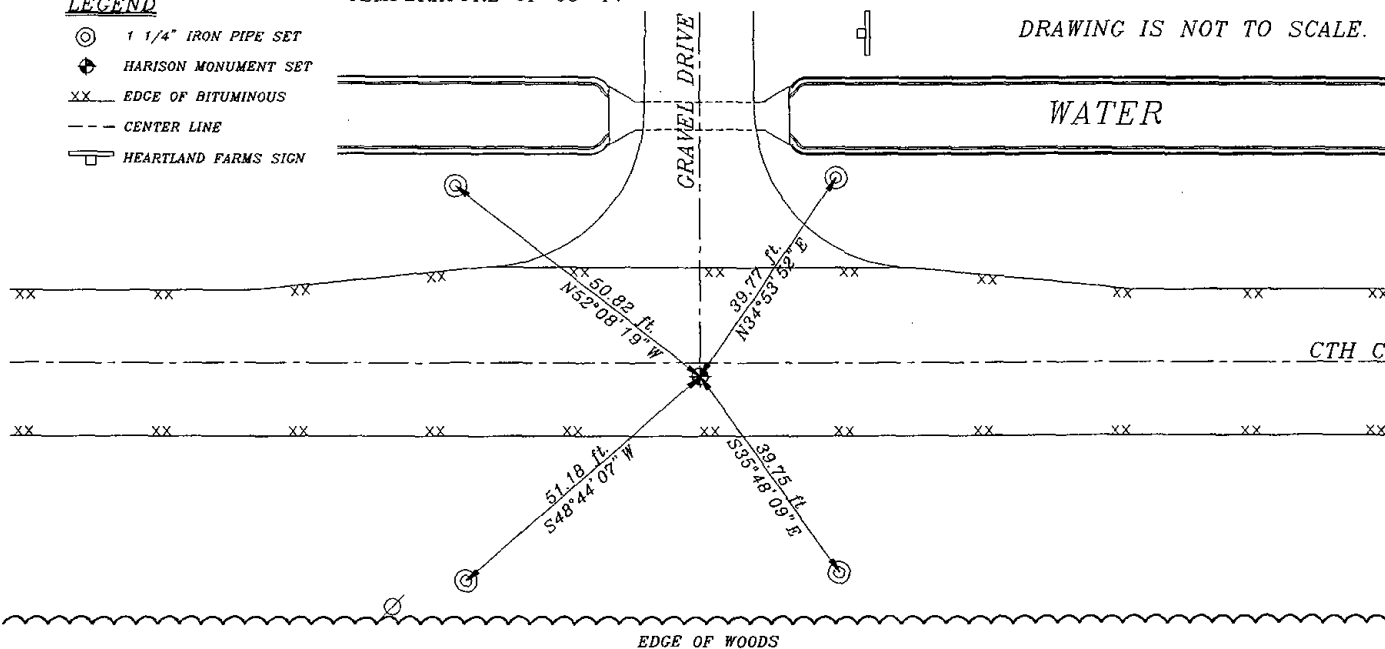
### TIE SKETCH:

SHOW MINIMUM OF FOUR (4) HORIZONTAL TIE DISTANCES TO FIXED WITNESS MONUMENTS. DESCRIBE ALL MONUMENTS FOUND OR SET. CORRECT ALL DISTANCES SHOWN TO STANDARD TEMPERATURE OF 68° F.

#### LEGEND

- ⊙ 1 1/4" IRON PIPE SET
- ⊕ HARRISON MONUMENT SET
- XX EDGE OF BITUMINOUS
- CENTER LINE
- ▭ HEARTLAND FARMS SIGN

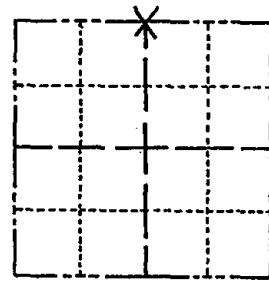
DRAWING IS NOT TO SCALE.



# Government Land Corner Certificate

ADAMS County  
 TYPE OF MONUMENT: HARRISON  
 STATE PLANE COORDINATES: N \_\_\_\_\_  
 E \_\_\_\_\_  
 ELEVATION — M.S.L. DATUM: \_\_\_\_\_  
 THETA ANGLE: \_\_\_\_\_  
 FIELD BOOK: 88 PAGE 27  
 DRAWN BY: L. COOMBS

CORNER NO. 66  
 SECTION 21  
 TOWN 19  
 RANGE 7



LOCATION  
(Indicated by 'X')

SEAL:



DATA SHOWN HERE ON  
CERTIFIED CORRECT:

*Anthony B. Kiedrowski*  
Registered Land Surveyor

DATE: 8/8/81

## BASIS FOR MONUMENT LOCATION

Show info such as: History of corner, with reference to Vol. and pg., dates, surveyor; exact description of monument replaced; if location computed, by taped or EDM traverse; landowner remarks, etc. (Use reverse side if necessary)

No resurvey records. Did not dig because there is no hint of occupation lines in this area. The corner is set on a straight line equidistant between section corners,

## TIE SKETCH

Show at least four ties, also fence lines, roads, topo, size and type of witness trees' and if off road - best way to arrive at corner.

