

15 SECTION 19 TOWN 07 RANGE

ADAMS COUNTY

COUNTY CORNER NO: 68
 ROMPORTOL ID: 41907150020

PUBLIC LAND SURVEY MONUMENT RECORD

TYPE OF MONUMENT: SURVEY NAIL
 ADAMS COUNTY COORDINATES, NAD 83 (2007)

N. 271925.232

E. 575334.138

ELEVATION- _____ DATUM _____

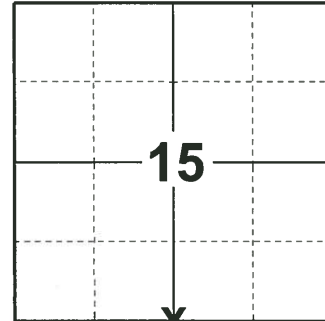
FIELD WORK DATE: 05/13/2019

BASIS FOR MONUMENT LOCATION

1975 - PLS 1103 RAN EDM/TRANSIT TRAVERSE AROUND SECTIONS 15 AND THE ADJACENT SECTIONS IN THE TOWN OF COLBURN. EXCAVATION WITH BACKHOE BY A.B. KIEDROWSKI, COUNTY SURVEYOR YIELDED NO EVIDENCE OF THE ORIGINAL CORNER OR ANY REMONUMENTATION. CORNER SET EQUIDISTANT AND ON LINE BETWEEN ADJACENT SECTION CORNERS.

2000 - PLS 2281 HARRISON MONUMENT RESET AFTER COMPLETION OF COUNTY HIGHWAY C RECONSTRUCTION PROJECT. LOCATION IS BASED ON THE EXISTING MONUMENT FOUND BEFORE CONSTRUCTION BEGAN.

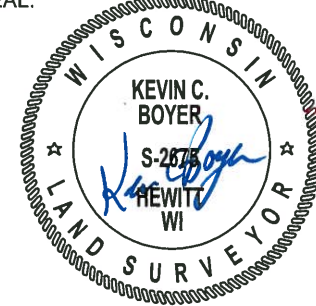
2019 - PLS 2675 FOUND MAG-NAIL SHAFT IN THE ROAD SURFACE, REMOVED, AND FOUND NO OTHER EVIDENCE OF ANY ADDITIONAL MONUMENTS BELOW. THE MAG-NAIL AGREES WITH THE EXISTING TIES. ACCEPTED THE MAG-NAIL SHAFT AS THE CORNER LOCATION. SET A SURVEY NAIL IN THE MAG-NAIL LOCATION AND MEASURED TO THE EXISTING TIES AND TO A FOUND PROPERTY IRON.



LOCATION

(INDICATE CORNER BY "X")

SEAL:



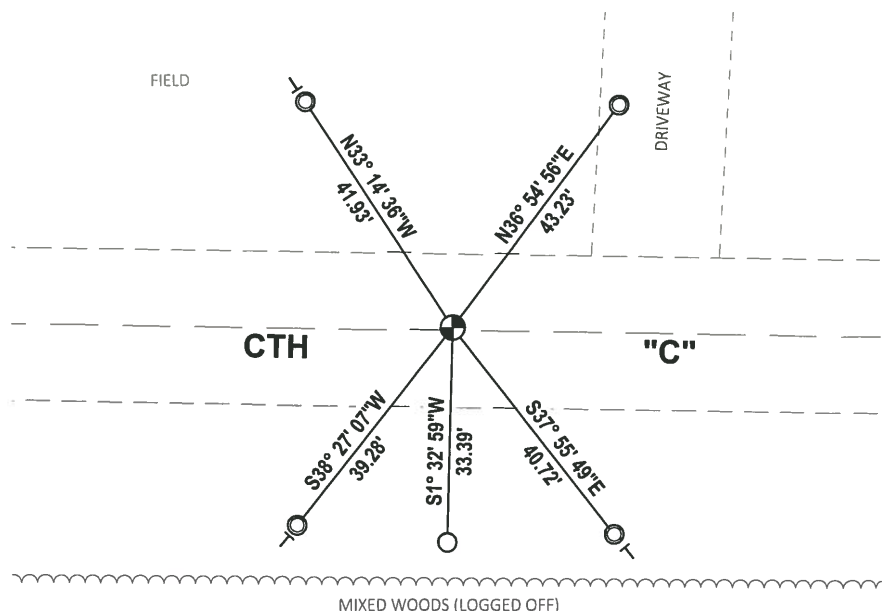
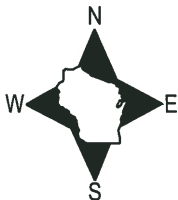
DATA SHOWN HERE ON THIS TIE SHEET IS CORRECT AND COMPLETE TO THE BEST OF MY KNOWLEDGE AND BELIEF.

PROFESSIONAL LAND SURVEYOR

DATE 6/4/19

TIE SKETCH

NOTE: THE CORNER LANDS 0.4± NORTH OF THE CENTERLINE OF CTH "C"



- FOUND 3/4" IRON ROD
- ⊙ FOUND 1-1/4" O.D. IRON PIPE
- ⊕ SET SURVEY NAIL
- | VINYL "T" POST

ADAMS COUNTY U.S. PUBLIC LAND SURVEY

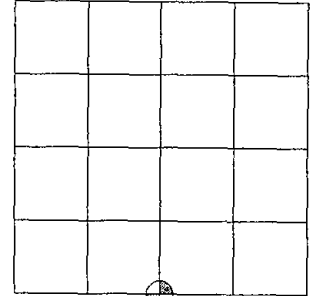
MONUMENT LOCATION RECORD

LANDMARK BENCHMARK:
CORNER IDENTITY: SOUTH QUATER CONER
STATE PLANE COORDINATE: N: _____ E: _____
ZONE: _____
ELEVATION: _____
DATUM: _____
THETA ANGLE: _____
WEATHER: SUNNY/COLD TEMPERATURE: 58° F
DATE OF SURVEY: 11/4/99
SURVEY PARTY: MARK HINTZ / CHRIS THORSON

- FOUND
- SET
- RE-SET
- RE-TIED

CORNER # 68
SECTION 15
TOWNSHIP 19 NORTH
RANGE 7 EAST

SECTION 15



LOCATION



BASIS FOR MONUMENT LOCATION:

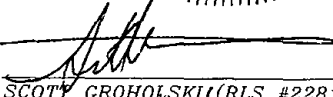
(DESCRIBE METHOD OF SURVEY AND CORNER AUTHENTICATION)

HARRISON MONUMENT RESET AFTER COMPLETION OF COUNTY HIGHWAY C RECONSTRUCTION PROJECT. LOCATION IS BASED ON THE EXISTING MONUMENT FOUND BEFORE CONSTRUCTION BEGAN.

OK. 9-24-07- JL

SEAL




SCOTT GRONOLSKI (RLS #2281)



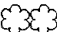
DATE

1/6/00

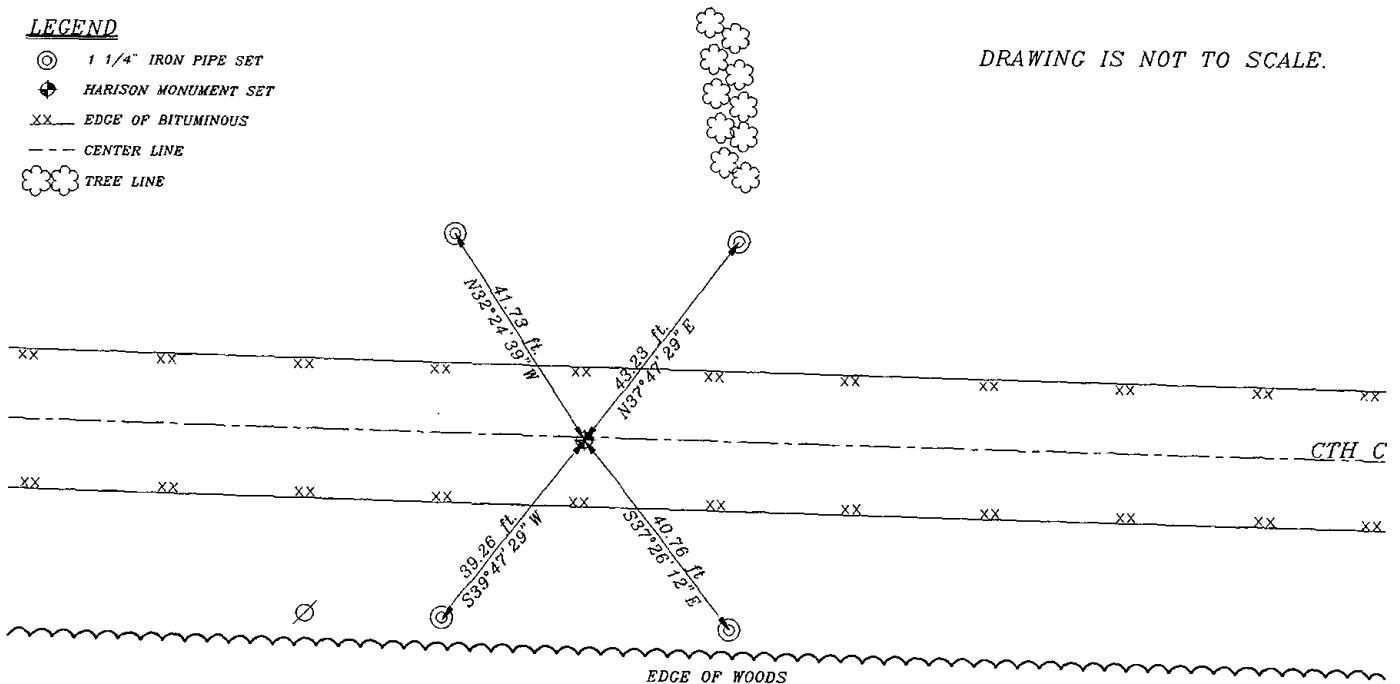
TIE SKETCH:

SHOW MINIMUM OF FOUR (4) HORIZONTAL TIE DISTANCES TO FIXED WITNESS MONUMENTS. DESCRIBE ALL MONUMENTS FOUND OR SET. CORRECT ALL DISTANCES SHOWN TO STANDARD TEMPERATURE OF 68° F.

LEGEND

-  1 1/4" IRON PIPE SET
-  HARRISON MONUMENT SET
- XX EDGE OF BITUMINOUS
- CENTER LINE
-  TREE LINE

DRAWING IS NOT TO SCALE.



ADAMS COUNTY

Survey Monument Record

TYPE OF MONUMENT: Standard Harrison

STATE PLANE COORDINATES: N _____ E _____

ELEVATION — M.S.L. DATUM: _____

THETA ANGLE: _____

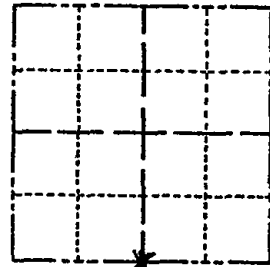
FIELD BOOK: _____ PAGE _____

CORNER NO. 910

SECTION 15

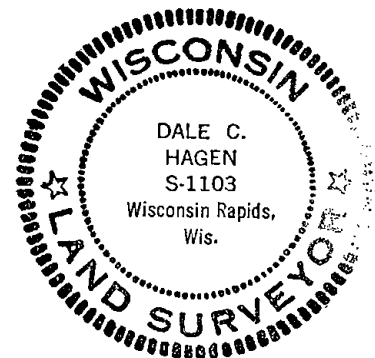
TOWN 19

RANGE 7E



LOCATION (Indicated by 'X')

SEAL:



BASIS FOR MONUMENT LOCATION

(Use reverse side if necessary)

Show info such as: History of corner, with reference to Vol. and pg, dates, surveyor; exact description of monument replaced; if location computed, by taped or EDM traverse; landowner remarks, etc.

Ran EDM/transit traverse around Section 15 and the adjacent sections in the Town of Colburn.

Excavation with backhoe by A.B.Kiedrowski, County Surveyor yielded no evidence of the original corner or any remonumentation.

Corner set equidistant and on line between adjacent section corners.

CORNER	O.K.	6-14-77	SK-SS
"	"	3-18-82	GR-SS
"	"	2-9-87	GR-SS
"	"	1-8-92	KZ-SG

SEE ATTACHED SHEET, GROHOLSKI, 1/11/08

CERTIFIED CORRECT:

Dale C. Hagen

Registered Land Surveyor
DATE: December 2, 1975

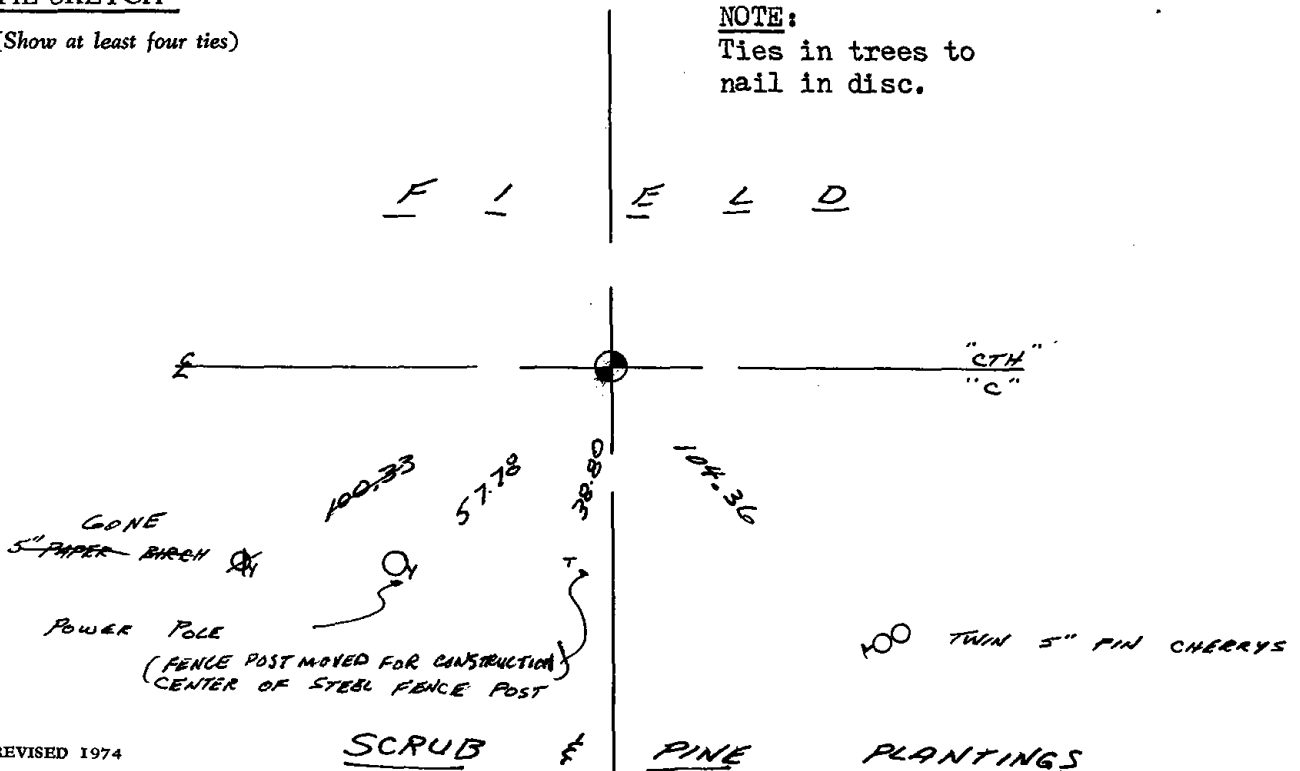
TIE SKETCH

2-GONE 1-04-02 JG

(Show at least four ties)

NOTE:

Ties in trees to nail in disc.



SCRUB

PINE

PLANTINGS