

15 SECTION 19 TOWN 07 RANGE

ADAMS COUNTY

COUNTY CORNER NO: 69
ROMPORTOL ID: 41907150000

PUBLIC LAND SURVEY MONUMENT RECORD

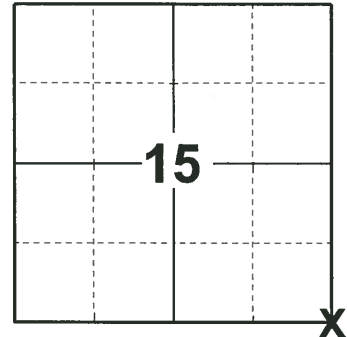
TYPE OF MONUMENT: HARRISON (BROKEN-TOP)
ADAMS COUNTY COORDINATES, NAD 83 (2007)

N. 271890.344

E. 577966.012

ELEVATION- - - - - DATUM - - - - -

FIELD WORK DATE: 05/07/2019



LOCATION

(INDICATE CORNER BY "X")

SEAL:



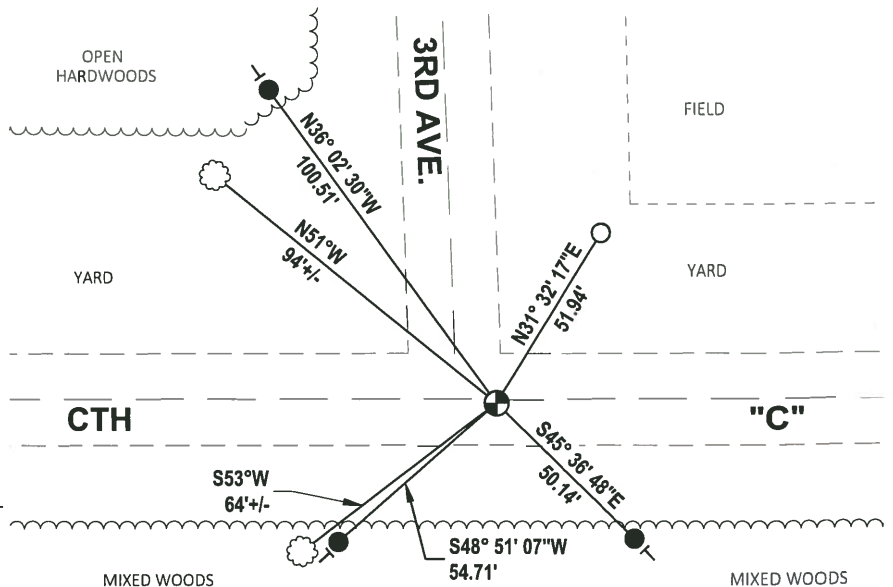
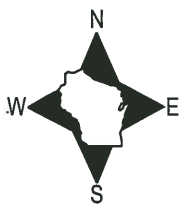
DATA SHOWN HERE ON THIS TIE SHEET IS CORRECT AND COMPLETE TO THE BEST OF MY KNOWLEDGE AND BELIEF.

PROFESSIONAL LAND SURVEYOR

DATE 6/4/19

- TIE SKETCH

NOTE: THE CORNER LANDS 1.8± SOUTH OF CENTERLINE OF CTH "C" AND 10.5± EAST OF CENTERLINE OF 3RD AVE.



- SET 3/4" x 18" IRON REBAR, 1.50#/FT
- FOUND 3/4" IRON ROD
- ⊕ FOUND HARRISON (BROKEN-TOP) MONUMENT
- └ VINYL "T" POST
- ☁ WITNESS TREE

ADAMS COUNTY

Survey Monument Record

TYPE OF MONUMENT: Harrison Monument

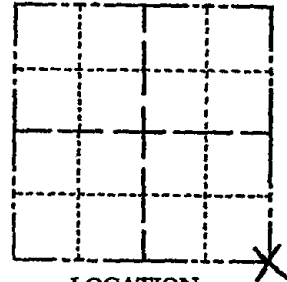
STATE PLANE COORDINATES: N _____
E _____

ELEVATION — M.S.L. DATUM: _____

THETA ANGLE: _____

FIELD BOOK: _____ PAGE _____

CORNER NO. 816
SECTION 15
TOWN 19
RANGE 7E



LOCATION
(Indicated by 'X')

SEAL:

BASIS FOR MONUMENT LOCATION

(Use reverse side if necessary)

Show info such as: History of corner, with reference to Vol. and pg, dates, surveyor; exact description of monument replaced; if location computed, by taped or EDM traverse; landowner remarks, etc.

Ran EDM/transit traverse around Sections 1, 2, 3, 10, 11, 12, 13, 14, 15 and 24 to determine search areas for corners.

Did not dig for corner because search area fell within cut section of roadway.

Set corner proportionally between adjacent Section corners to the East and West and on the centerline of County Trunk Highway 'C'.



CORNER.	O.K.	4-26-77	GR-SS
"	"	3-18-82	GR-SS
"	"	2-9-86	OK GR-SS
"	"	1-8-92	KZ-JG
"	"	9-24-07	JL

CERTIFIED CORRECT

Dale C. Hagen
Registered Land Surveyor

DATE: Nov. 5, 1975

TIE SKETCH

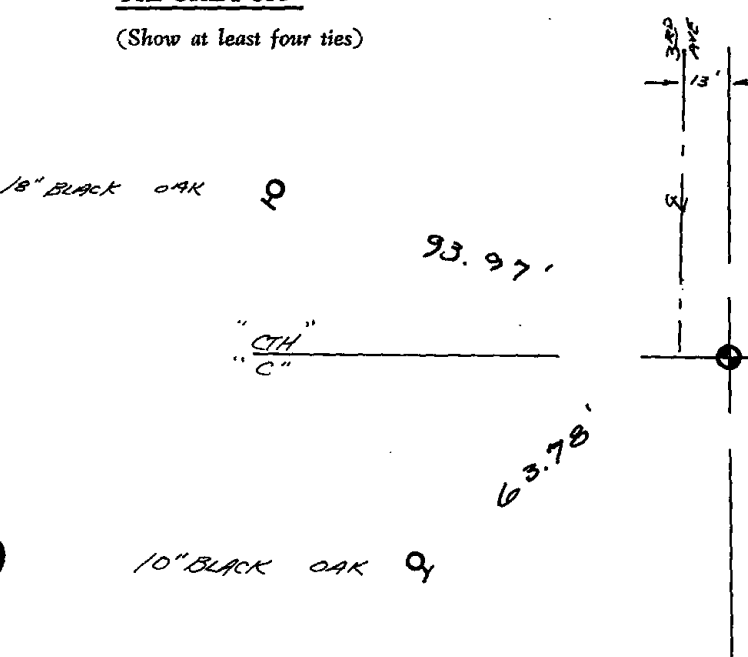
(Show at least four ties)

NOTE:

Ties in trees to nail in disc.



SW CORNER CONCRETE TELEPHONE PAD



64.24'

63.78'

10" BLACK OAK