

14 SECTION    19 TOWN    07 RANGE

# ADAMS COUNTY

COUNTY CORNER NO: 70  
 ROMPORTOL ID: 41907140020

## PUBLIC LAND SURVEY MONUMENT RECORD

TYPE OF MONUMENT: SURVEY NAIL  
 ADAMS COUNTY COORDINATES, NAD 83 (2007)

N. 271900.194  
 E. 580654.999

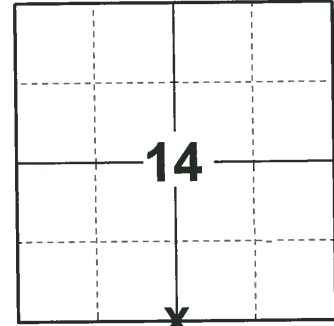
ELEVATION- - - - - DATUM - - - - -

FIELD WORK DATE: 05/07/2019

### BASIS FOR MONUMENT LOCATION

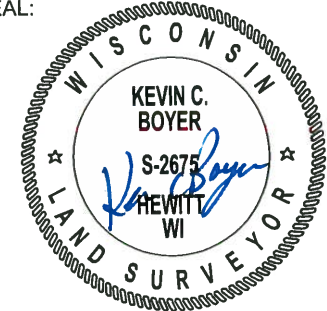
1975 - PLS 1103 RAN EDM/TRANSIT TRAVERSE AROUND SECTIONS 1, 2, 3, 10, 11, 12, 13, 14, 15, AND 24 TO DETERMINE SEARCH AREAS FOR INVESTIGATION. COULD FIND NO EVIDENCE OF THE ORIGINAL CORNER OR ANY REMONUMENTATION. SET CORNER EQUIDISTANT AND ON LINE BETWEEN ADJACENT SECTION CORNERS.

2019 - PLS 2675 FOUND A MAG NAIL IN THE ROAD SURFACE, REMOVED AND FOUND NO OTHER EVIDENCE OF ANY ADDITIONAL MONUMENTS BELOW. THE MAG NAIL LOCATION AGREES WITH A EQUIDISTANT STRAIGHT LINE SPLIT BETWEEN THE SW AND SE CORNERS OF SECTION 14. ACCEPTED THIS AS THE CORNER LOCATION. REPLACED THE MAG NAIL WITH A SURVEY NAIL AND SET 4 NEW TIES.



**LOCATION**  
 (INDICATE CORNER BY "X")

SEAL:



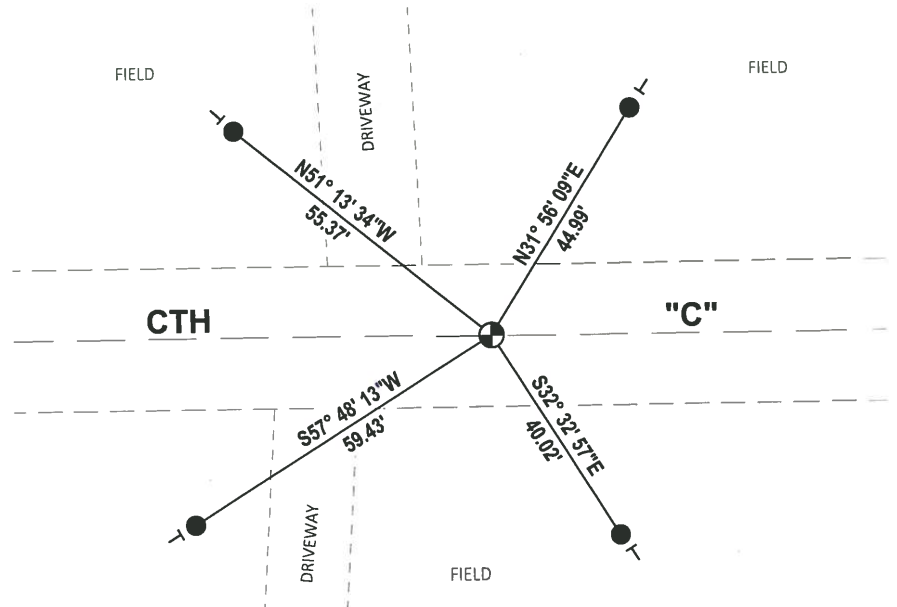
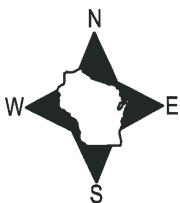
DATA SHOWN HERE ON THIS TIE SHEET IS CORRECT AND COMPLETE TO THE BEST OF MY KNOWLEDGE AND BELIEF.

PROFESSIONAL LAND SURVEYOR

DATE 6/4/19

### TIE SKETCH

NOTE: THE CORNER LANDS ON THE CENTERLINE OF CTH "C".



- SET 3/4" x 18" IRON REBAR, 1.50#/FT
- ⊙ SET SURVEY NAIL MONUMENT
- ⊥ VINYL "T" POST

ADAMS COUNTY

Survey Monument Record

TYPE OF MONUMENT: Standard Harrison

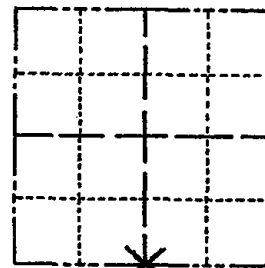
STATE PLANE COORDINATES: N \_\_\_\_\_  
E \_\_\_\_\_

ELEVATION — M.S.L. DATUM: \_\_\_\_\_

THETA ANGLE: \_\_\_\_\_

FIELD BOOK: \_\_\_\_\_ PAGE \_\_\_\_\_

CORNER NO. 832 (70)  
SECTION 14  
TOWN 19 N  
RANGE 7 E



LOCATION  
(Indicated by 'X')

SEAL:



BASIS FOR MONUMENT LOCATION

(Use reverse side if necessary)

Show info such as: History of corner, with reference to Vol. and pg, dates, surveyor; exact description of monument replaced; if location computed, by taped or EDM traverse; landowner remarks, etc.

Ran EDM/transit traverse around Sections 1, 2, 3, 10, 11, 12, 13, 14, 15 and 24 to determine search areas for investigation.

Could find no evidence of the original corner or any remonumentation.

Set corner equidistant and on line between adjacent section corners.

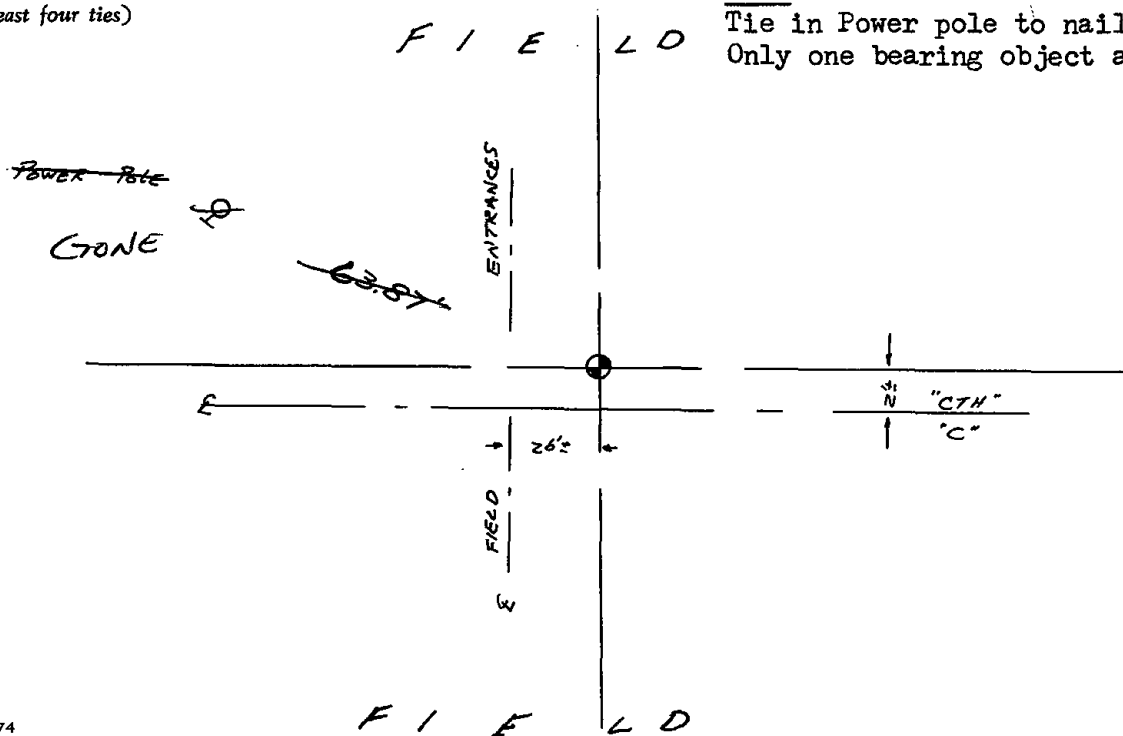
CORNER	O.K.	4-26-77	GR-55
"	"	3-18-82	GR-55
NO TIES AVAILABLE		2-9-87	GR
"	"	1-8-92	KZ-JG

CERTIFIED CORRECT:

*Dale C. Hagen*  
Registered Land Surveyor  
DATE: December 2, 1975

TIE SKETCH

(Show at least four ties)



NOTE:

Tie in Power pole to nail in disc.  
Only one bearing object available.