

19 SECTION 19 TOWN 07 RANGE

ADAMS COUNTY

COUNTY CORNER NO: 75
ROMPORTOL ID: 41907192000

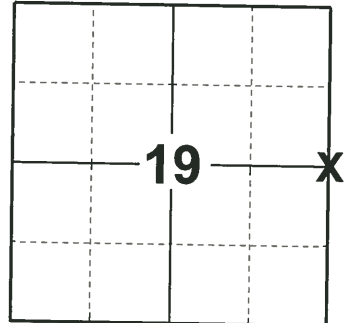
PUBLIC LAND SURVEY MONUMENT RECORD

TYPE OF MONUMENT: HARRISON
ADAMS COUNTY COORDINATES, NAD 83 (2007)

N. 269224.076
E. 562153.584

ELEVATION- _____ DATUM _____

FIELD WORK DATE: 05/21/2019



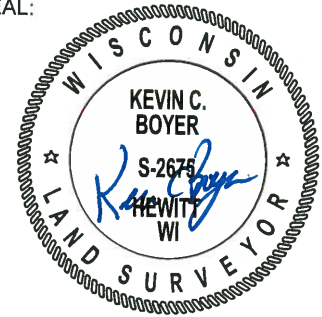
LOCATION
(INDICATE CORNER BY "X")

BASIS FOR MONUMENT LOCATION

1977 - PLS 1103 RAN EDM/T2 TRAVERSE AROUND SECTION 19 AND MANY ADJACENT SECTIONS TO DETERMINE SEARCH AREA FOR INVESTIGATION. EXCAVATION WITH BACKHOE YIELDED NO EVIDENCE OF THE ORIGINAL CORNER, ANY REMONUMENTATION, AND NO BEARING TREES WERE FOUND. RELOCATED CORNER BY SINGLE PROPORTIONATE MEASURE ON LINE BETWEEN ADJACENT SECTION CORNERS. SET HARRISON MONUMENT ON 9-1-1977.

2019 - PLS 2675 FOUND HARRISON FLUSH WITH THE GROUND AND 3 WITNESS. THE MONUMENT AGREES WITH THE EXISTING WITNESSES. ACCEPTED THE HARRISON AS THE CORNER LOCATION. SET 4 NEW TIES AND MONUMENT TO THE EXISTING WITNESS.

SEAL:



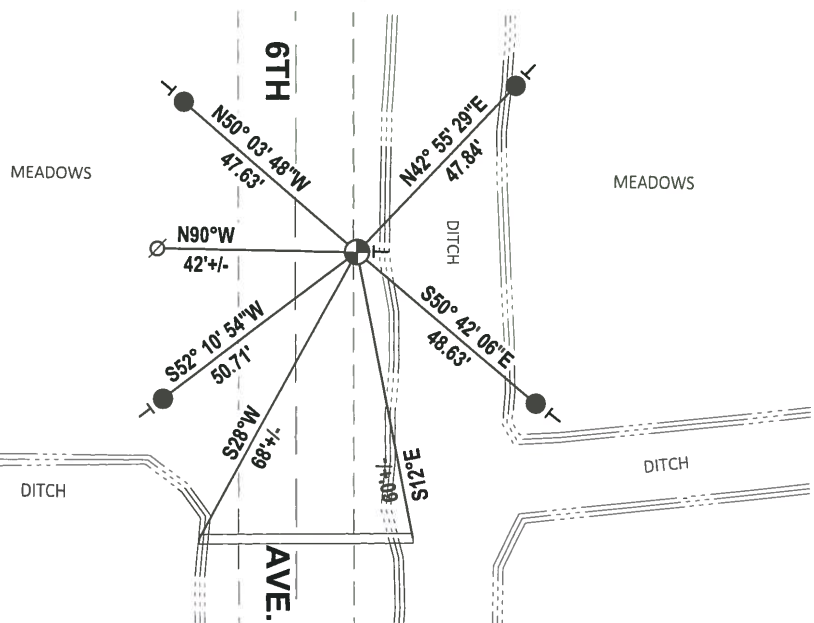
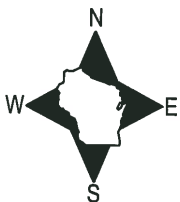
DATA SHOWN HERE ON THIS TIE SHEET IS CORRECT AND COMPLETE TO THE BEST OF MY KNOWLEDGE AND BELIEF.

PROFESSIONAL LAND SURVEYOR

DATE 6/4/19

TIE SKETCH

NOTE: THE CORNER LANDS 12.8'± EAST OF CENTERLINE OF 6TH AVE.

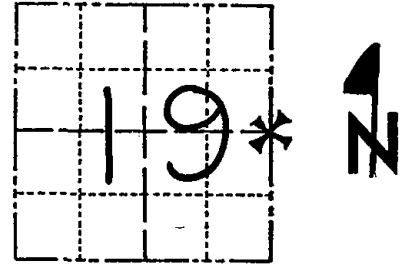


- SET 3/4" x 18" IRON REBAR, 1.50#/FT
- ⊕ FOUND HARRISON MONUMENT
- ∅ WITNESS POWER POLE
- ┆ VINYL "T" POST

Government Land Corner Certificate

ADAMS County
 TYPE OF MONUMENT: HARRISON
 STATE PLANE COORDINATES: N _____
 E _____
 ELEVATION — M.S.L. DATUM: _____
 THETA ANGLE: _____
 FIELD BOOK: 54 PAGE 27
 DRAWN BY: D.C. HAGEN

CORNER NO. 75
 SECTION 19
 TOWN 19
 RANGE 7



LOCATION
(Indicated by 'X')

BASIS FOR MONUMENT LOCATION

Show info such as: History of corner, with reference to Vol. and pg., dates, surveyor; exact description of monument replaced; if location computed, by taped or EDM traverse; landowner remarks, etc. (Use reverse side if necessary)

Ran EDM/T2 traverse around Section 19 and many adjacent sections to determine search area for investigation.

Excavation with backhoe yielded no evidence of the original corner, any remonumentation, and no bearing trees were found.

Relocated corner by single proportionate measure on line between adjacent section corners.

Set Harrison monument on 9-1-1977.

SEAL:



DATA SHOWN HERE ON
CERTIFIED CORRECT:

Dale C. Hagen
Registered Land Surveyor

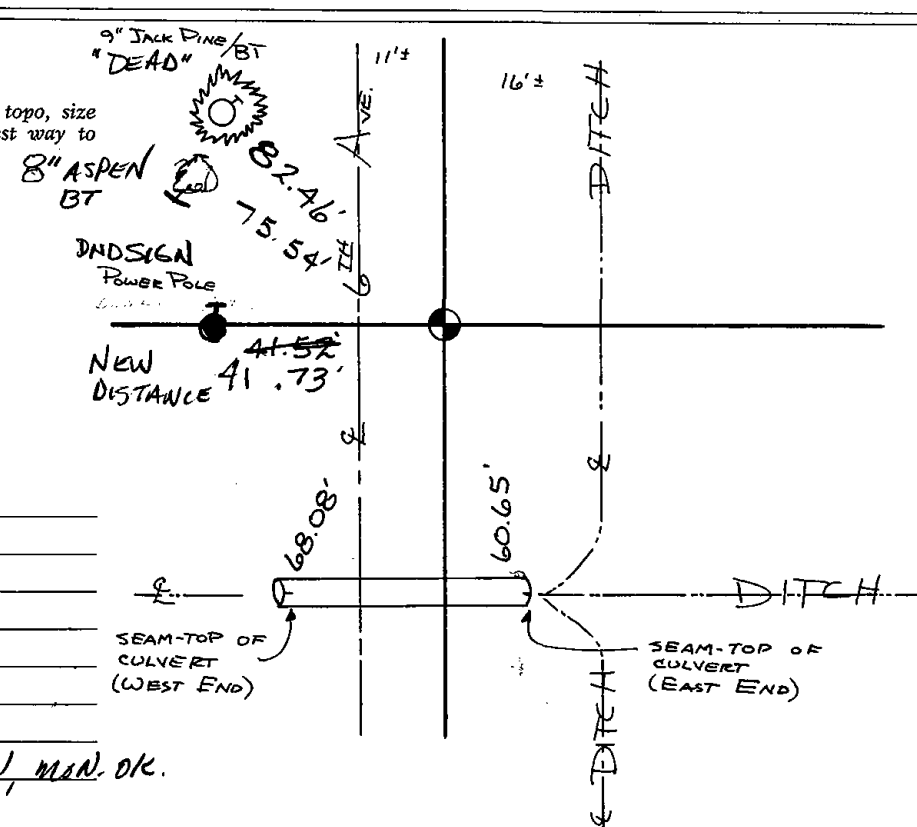
DATE: 11-2-1977

TIE SKETCH

Show at least four ties, also fence lines, roads, topo, size and type of witness trees' and if off road - best way to arrive at corner.

NOTE

Ties in trees to nail in disc.



MAINTENANCE RECORD

Date	Init.	Remarks
8-23-82	PK-SS	O.K.
2-9-87	ORSS	OK
1-8-92	KZ-JG	OK
3-7-97	JG-SS	OK
1-04-02	JG	OK
10-4-07	JG-PS	1-DEAD, 1-NEW, MAIN OK.