

24 SECTION 19 TOWN 06 RANGE

ADAMS COUNTY

COUNTY CORNER NO: 93

ROMPORTOL ID: 41906240000

PUBLIC LAND SURVEY MONUMENT RECORD

TYPE OF MONUMENT: HARRISON
ADAMS COUNTY COORDINATES, NAD 83 (2007)

N. 266539.519

E. 557194.925

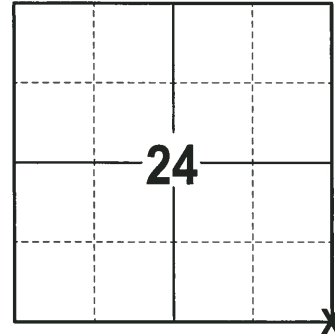
ELEVATION- DATUM

FIELD WORK DATE: 01/29/2018

BASIS FOR MONUMENT LOCATION

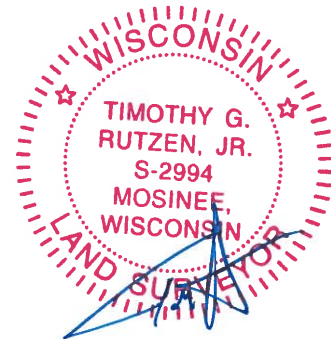
1977 - PLS 1103 RAN EDM/T2 TRAVERSE ALONG THE RANGE LINE FROM THE SOUTHWEST CORNER OF SECTION 31-19-7 TO THE NORTHWEST CORNER OF SECTION 18-19-7 TO DETERMINE SEARCH AREA FOR INVESTIGATION. COULDN'T FIND ANY EVIDENCE OF THE ORIGINAL CORNER OR ANY SUBSEQUENT REMONUMENTATION OR ANY OF THE BEARING TREES. RELOCATED THE CORNER BY SINGLE PROPORTIONATE MEASUREMENT BETWEEN THE ABOVE NOTED CORNERS ON STRAIGHT LINES WITH PI AT THE NORTHWEST CORNER OF SECTION 19-19-7 TO MATCH THE ONLY SUBSTANTIAL OCCUPATION ALONG THE RANGE LINE. SET A HARRISON MONUMENT AT THE CALCULATED LOCATION AND TIED OUT.

2018 - PLS 2994 FOUND A HARRISON MONUMENT 4" ABOVE THE GROUND SURFACE AND 1 WITNESS TREE. THE MONUMENT AGREES WITH THE EXISTING WITNESS TREE. ACCEPTED THE HARRISON MONUMENT AS THE CORNER LOCATION. SET 4 NEW TIES AND MEASURED TO THE TIES AND WITNESS TREE.



LOCATION
(INDICATE CORNER BY "X")

SEAL:



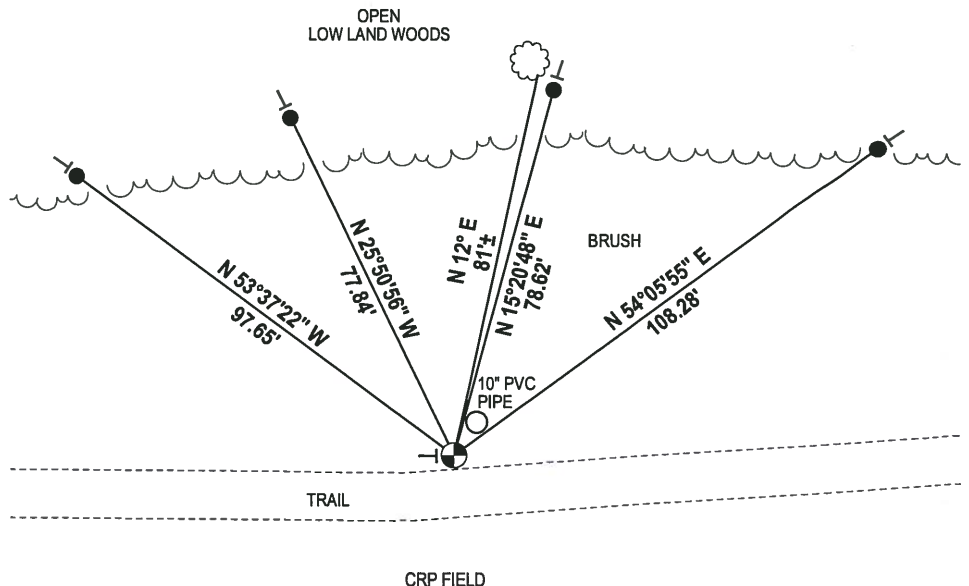
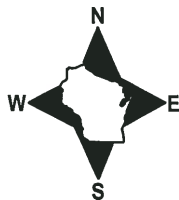
DATA SHOWN HERE ON THIS TIE SHEET IS CORRECT AND COMPLETE TO THE BEST OF MY KNOWLEDGE AND BELIEF.

PROFESSIONAL LAND SURVEYOR

DATE 3-1-18

- TIE SKETCH

NOTE: THE CORNER FALLS 8 1/2' NORTH OF THE CENTERLINE OF THE TRAIL.

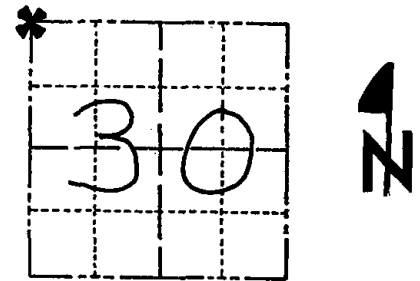


- 3/4" x 18" IRON REBAR SET, 1.50#/FT
- ⊙ HARRISON FOUND
- └ VINYL "T" POST
- ☁ WITNESS TREE FOUND

Government Land Corner Certificate

ADAMS _____ County
 TYPE OF MONUMENT: HARRISON STD.
 STATE PLANE COORDINATES: N _____
 E _____
 ELEVATION — M.S.L. DATUM: _____
 THETA ANGLE: _____
 FIELD BOOK: 54 PAGE 25
 DRAWN BY: SCOTT SORENSEN

CORNER NO. 81
 SECTION 30
 TOWN 19
 RANGE 7



LOCATION
 (Indicated by 'X')

BASIS FOR MONUMENT LOCATION

Show info such as: History of corner, with reference to Vol. and pg., dates, surveyor; exact description of monument replaced; if location computed, by taped or EDM traverse; landowner remarks, etc. (Use reverse side if necessary)

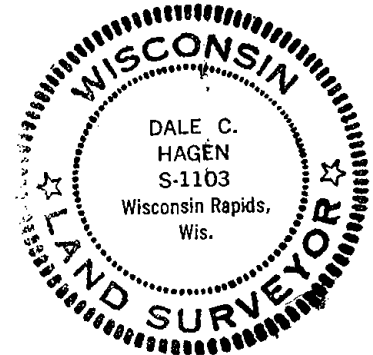
Ran EDM/T2 traverse along range line from Southwest corner of Section 31-19-7 to the Northwest corner of Section 18-19-7 to determine search area for investigation.

Could find no evidence of the original corner or any subsequent re-monumentation. Could find no bearing trees.

Relocated corner by single proportionate measure between above noted corners on straight lines with PI at the Northwest corner of Section 19-19-7 to match the only substantial occupation along the range line.

Set Harrison Monument on 8-31-1977.

SEAL:



DATA SHOWN HERE ON
 CERTIFIED CORRECT:

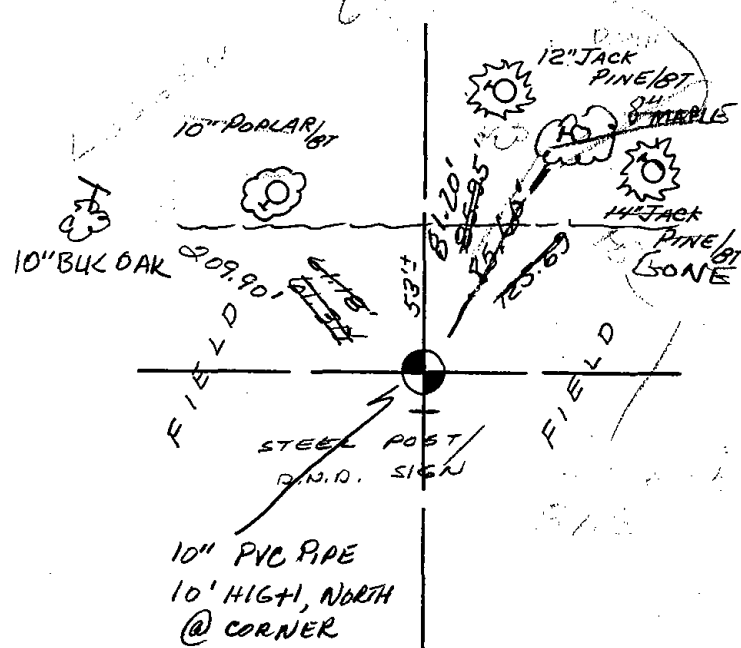
Dale C. Hagén
 Registered Land Surveyor
 DATE: 11-2-1977

TIE SKETCH

Show at least four ties, also fence lines, roads, topo, size and type of witness trees' and if off road - best way to arrive at corner.

NOTE

Ties in trees to nail in disc.



MAINTENANCE RECORD

Date	Init.	Remarks
8-23-82	PK-SS	O.K.
7-13-92	SG-BS	1-NEW-1-GONE
10-22-07	SG-GR	1-GONE, 1-NEW, MON. OK