

19 SECTION 19 TOWN 07 RANGE

ADAMS COUNTY

COUNTY CORNER NO: 83
ROMPORTOL ID: 41907190000

PUBLIC LAND SURVEY MONUMENT RECORD

TYPE OF MONUMENT: HARRISON (BROKEN-TOP)
ADAMS COUNTY COORDINATES, NAD 83 (2007)

N. 266575.341

E. 562165.832

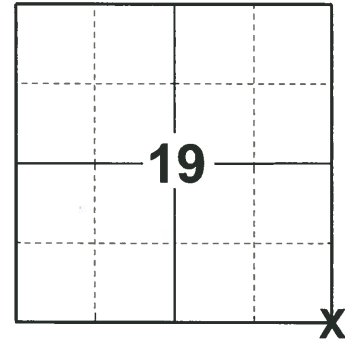
ELEVATION- DATUM

FIELD WORK DATE: 05/21/2019

BASIS FOR MONUMENT LOCATION

1981 - PLS 878 NO RESURVEY, EXCAVATED 10'X20' AREA WITH FRONT END LOADER, FOUND NOTHING. THIS POINT IS SET HALF WAY BETWEEN THE SECTION CORNERS A MILE NORTH AND SOUTH OF HERE. THE EAST-WEST LOCATION DETERMINED BY TRAVERSE A MILE TO THE WEST, TAKING INTO ACCOUNT ORIGINAL NOTES COMPARED WITH POSSESSION LINES.

2019 - PLS 2675 FOUND HARRISON (BROKEN-TOP) 4" BELOW THE ROAD SURFACE AND 2 WITNESS TREES. THE MONUMENT AGREES WITH BOTH WITNESSES. ACCEPTED THE HARRISON (BROKEN-TOP) AS THE CORNER LOCATION. SET 4 NEW TIES AND MEASURED TO THE EXISTING WITNESSES.



LOCATION

(INDICATE CORNER BY "X")

SEAL:



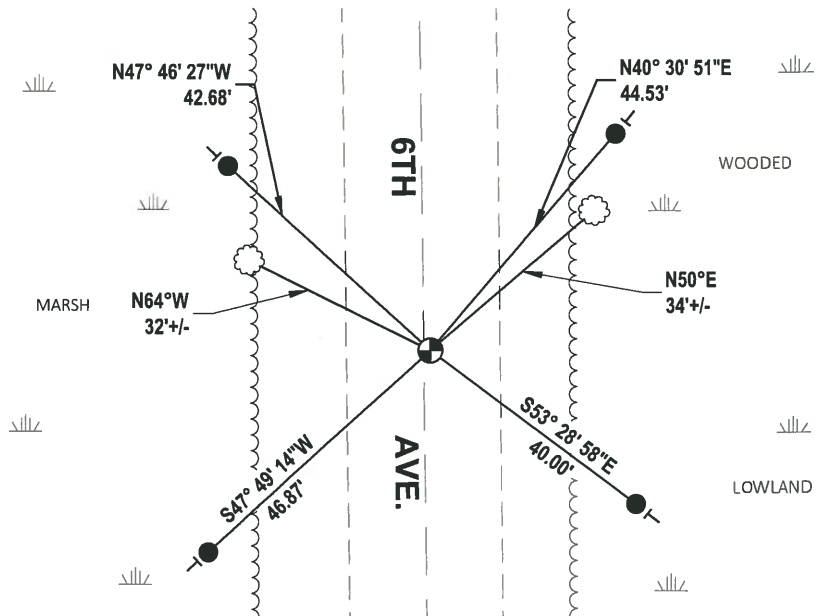
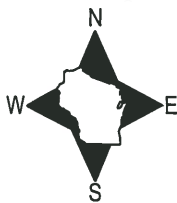
DATA SHOWN HERE ON THIS TIE SHEET IS CORRECT AND COMPLETE TO THE BEST OF MY KNOWLEDGE AND BELIEF.

PROFESSIONAL LAND SURVEYOR

DATE 6/4/19

TIE SKETCH

NOTE: THE CORNER LANDS 1.0'± EAST OF CENTERLINE OF 6TH AVE.

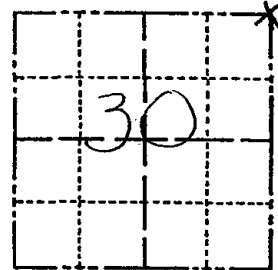


- SET 3/4" x 18" IRON REBAR, 1.50#/FT
- ⊕ FOUND HARRISON (BROKEN-TOP) MONUMENT
- VINYL "T" POST
- ☼ WITNESS TREE

Government Land Corner Certificate

ADAMS County
 TYPE OF MONUMENT: HARRISON
 STATE PLANE COORDINATES: N _____
 E _____
 ELEVATION — M.S.L. DATUM: _____
 THETA ANGLE: _____
 FIELD BOOK: 88 PAGE 26
 DRAWN BY: L. COOMBS

CORNER NO. 83
 SECTION 30
 TOWN 19
 RANGE 7



LOCATION
 (Indicated by 'X')

BASIS FOR MONUMENT LOCATION

Show info such as: History of corner, with reference to Vol. and pg., dates, surveyor; exact description of monument replaced; if location computed, by taped or EDM traverse; landowner remarks, etc. (Use reverse side if necessary)

No resurvey & Excavated 10' x 20' area with front end loader, found nothing. This point is set half way between the section corners a mile north and south of here. The east-west location determined by traverse a mile to the west, taking into account original notes compared with possession lines.

SEAL:



DATA SHOWN HERE ON
 CERTIFIED CORRECT:

Anthony B. Kiedrowski
 Registered Land Surveyor

DATE: 8/4/81

TIE SKETCH

Show at least four ties, also fence lines, roads, topo, size and type of witness trees' and if off road - best way to arrive at corner.

