

20  
SECTION

19  
TOWN

07  
RANGE

# ADAMS COUNTY

COUNTY CORNER NO: 84

ROMPORTOL ID: 41907200020

## PUBLIC LAND SURVEY MONUMENT RECORD

TYPE OF MONUMENT: HARRISON  
ADAMS COUNTY COORDINATES, NAD 83 (2007)

N. 266584.005

E. 564808.818

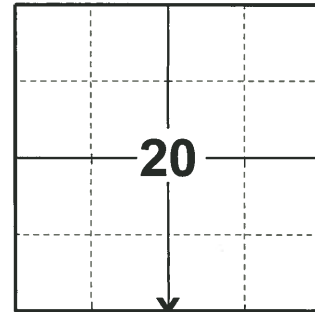
ELEVATION- - - - - DATUM - - - - -

FIELD WORK DATE: 03/21/2019

### BASIS FOR MONUMENT LOCATION

1983 - PLS 1551 NO OCCUPATION LINES IN AREA, SIGNS OF ORIGINAL BEARING TREES ARE GONE. CORNER WAS RESET PROPORTIONALLY ON A STRAIGHT LINE BETWEEN ADJACENT SECTION CORNERS.

2019 - PLS 2675 FOUND HARRISON 4" ABOVE THE SWAMP SURFACE AND 4 WITNESSES. THE MONUMENT AGREES WITH ALL 4 WITNESSES. ACCEPTED THE HARRISON AS THE CORNER LOCATION. SET 4 NEW TIES AND MEASURED TO THE EXISTING WITNESSES.



LOCATION

(INDICATE CORNER BY "X")

SEAL:

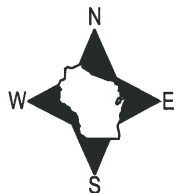


DATA SHOWN HERE ON THIS TIE SHEET IS CORRECT AND COMPLETE TO THE BEST OF MY KNOWLEDGE AND BELIEF.

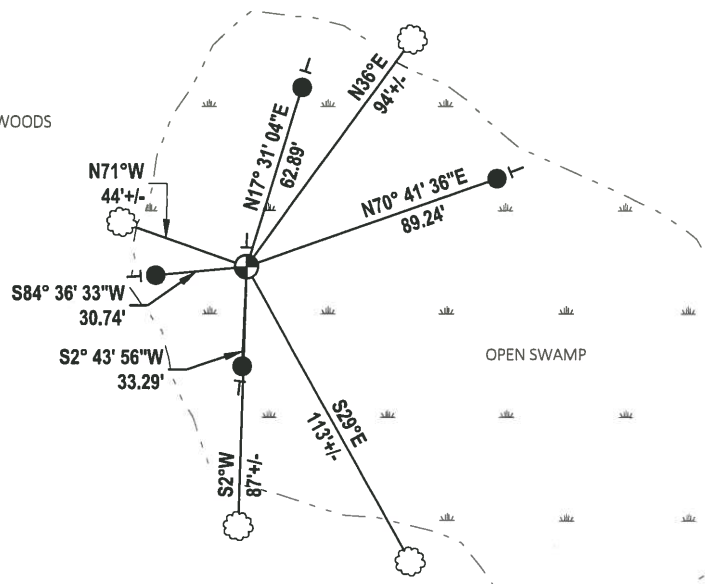
PROFESSIONAL LAND SURVEYOR

DATE 5/1/19

### - TIE SKETCH



MIXED WOODS



- SET 3/4" x 48" IRON REBAR, 1.50#/FT
- ⊕ FOUND HARRISON MONUMENT
- ┆ VINYL "T" POST
- ☼ WITNESS TREE

# U.S. PUBLIC LAND SURVEY MONUMENT RECORD

## ADAMS COUNTY

TYPE OF MONUMENT: Standard Harrison

STATE PLANE COORDINATES: N \_\_\_\_\_  
E \_\_\_\_\_

ELEVATION — M.S.L. DATUM: \_\_\_\_\_

THETA ANGLE: \_\_\_\_\_

FIELD BOOK: Adams County PAGE 65

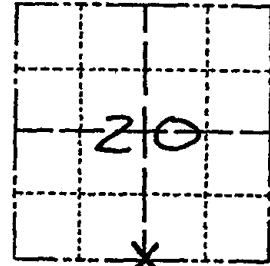
DRAWN BY: D. Riesop

CORNER NO. 84

SECTION 20

TOWN 19 N

RANGE 7 E



LOCATION  
(Indicated by 'X')

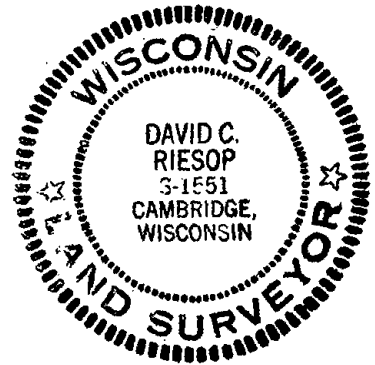
### BASIS FOR MONUMENT LOCATION

Show info such as: History of corner, with reference to Vol. and pg., dates, surveyor; exact description of monument replaced; if location computed, by taped or EDM traverse; landowner remarks, etc. (Use reverse side if necessary)  
(in conformance with Section A-E 502 of the Wisconsin Administrative Code)

No occupation lines in area, signs of original bearing trees are gone.

Corner was reset proportionally on a straight line between adjacent Section corners.

SEAL:



DATA SHOWN HERE ON  
CERTIFIED CORRECT:

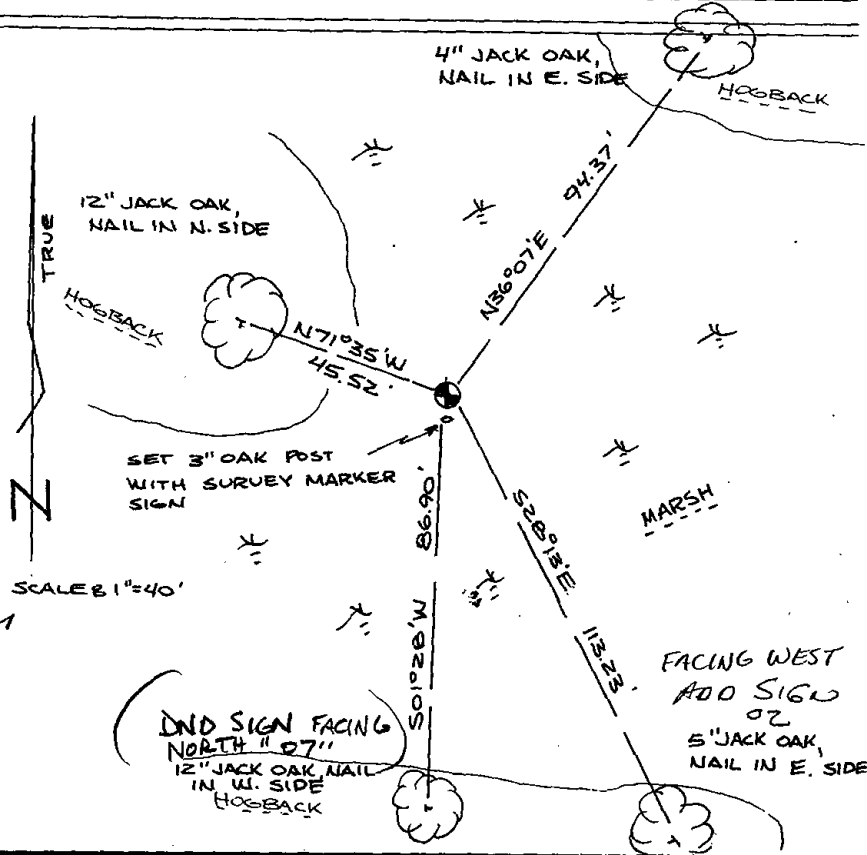
*David C. Riesop*  
Registered Land Surveyor

DATE: 8/26/83

28<sup>th</sup>  
filed for record this.....  
day of Sept..... 1983  
per 59.60 Wisconsin Statutes.  
*D. Riesop*  
ADAMS COUNTY SURVEYOR

### TIE SKETCH

Show at least four ties, also fence lines, roads, topo, size and type of 'witness trees' and if off road - best way to arrive at corner.



### MAINTENANCE RECORD

Date	Init.	Remarks
7-13-92	JG-BS	OK
2-25-82	SS	OK - NAILS 1 40" HIGH
10-22-07	JG	OK