

21
SECTION

19
TOWN

07
RANGE

ADAMS COUNTY

COUNTY CORNER NO: 86

ROMPORTOL ID: 41907210020

PUBLIC LAND SURVEY MONUMENT RECORD

TYPE OF MONUMENT: 2-3/8" O.D. IRON PIPE
ADAMS COUNTY COORDINATES, NAD 83 (2007)

N. 266620.071

E. 570097.693

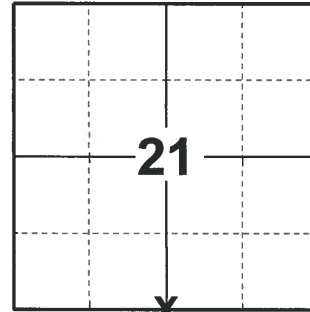
ELEVATION- DATUM

FIELD WORK DATE: 04/15/2019

BASIS FOR MONUMENT LOCATION

1983 - PLS 1551 NO EVIDENCE OF BEARING TREES REMAINS, NO OCCUPATION IN AREA. CORNER WAS RESET PROPORTIONALLY ON A STRAIGHT LINE BETWEEN ADJACENT SECTION CORNERS.

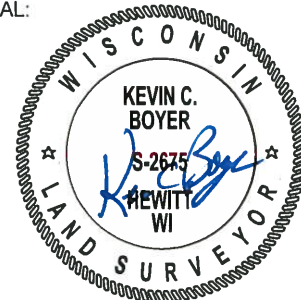
2019 - PLS 2675 FOUND 2-3/8" O.D. IRON PIPE 12" ABOVE THE SWAMP SURFACE AND 1 WITNESS. THE MONUMENT AGREES WITH THE WITNESS. ACCEPTED THE 2-3/8" O.D. IRON PIPE AS THE CORNER LOCATION. SET 4 NEW TIES AND MEASURED TO THE EXISTING WITNESS.



LOCATION

(INDICATE CORNER BY "X")

SEAL:

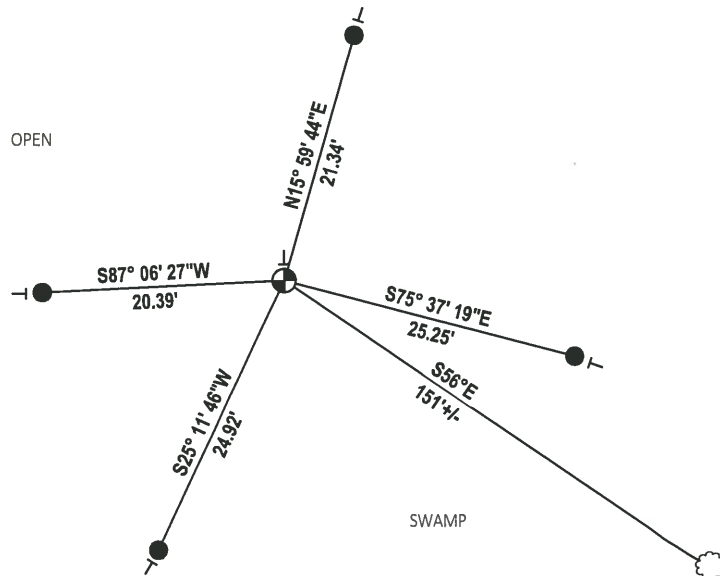
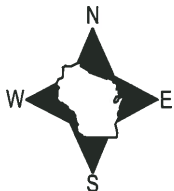


DATA SHOWN HERE ON THIS TIE SHEET IS CORRECT AND COMPLETE TO THE BEST OF MY KNOWLEDGE AND BELIEF.

PROFESSIONAL LAND SURVEYOR

DATE 5/1/19

TIE SKETCH



- SET 3/4" x 48" IRON REBAR, 1.50#/FT
- ⊕ FOUND 2-3/8" O.D. IRON PIPE MONUMENT
- ┆ VINYL "T" POST
- ☼ WITNESS TREE

U.S. PUBLIC LAND SURVEY MONUMENT RECORD

ADAMS COUNTY

TYPE OF MONUMENT: 2" I.D. x 60" galvanized pipe

STATE PLANE COORDINATES: N _____
E _____

ELEVATION — M.S.L. DATUM: _____

THETA ANGLE: _____

FIELD BOOK: Adams County PAGE 63

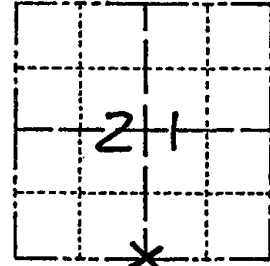
DRAWN BY: D. Riesop

CORNER NO. 86

SECTION 21

TOWN 19N

RANGE 7E



LOCATION
(Indicated by 'X')

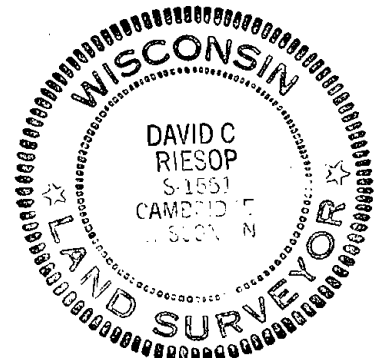
BASIS FOR MONUMENT LOCATION

Show info such as: History of corner, with reference to Vol. and pg., dates, surveyor; exact description of monument replaced; if location computed, by taped or EDM traverse; landowner remarks, etc. (Use reverse side if necessary) (in conformance with Section A-E 502 of the Wisconsin Administrative Code)

No evidence of bearing trees remains, no occupation in area.

Corner was reset proportionally on a straight line between adjacent section corners.

SEAL:



DATA SHOWN HERE ON CERTIFIED CORRECT:

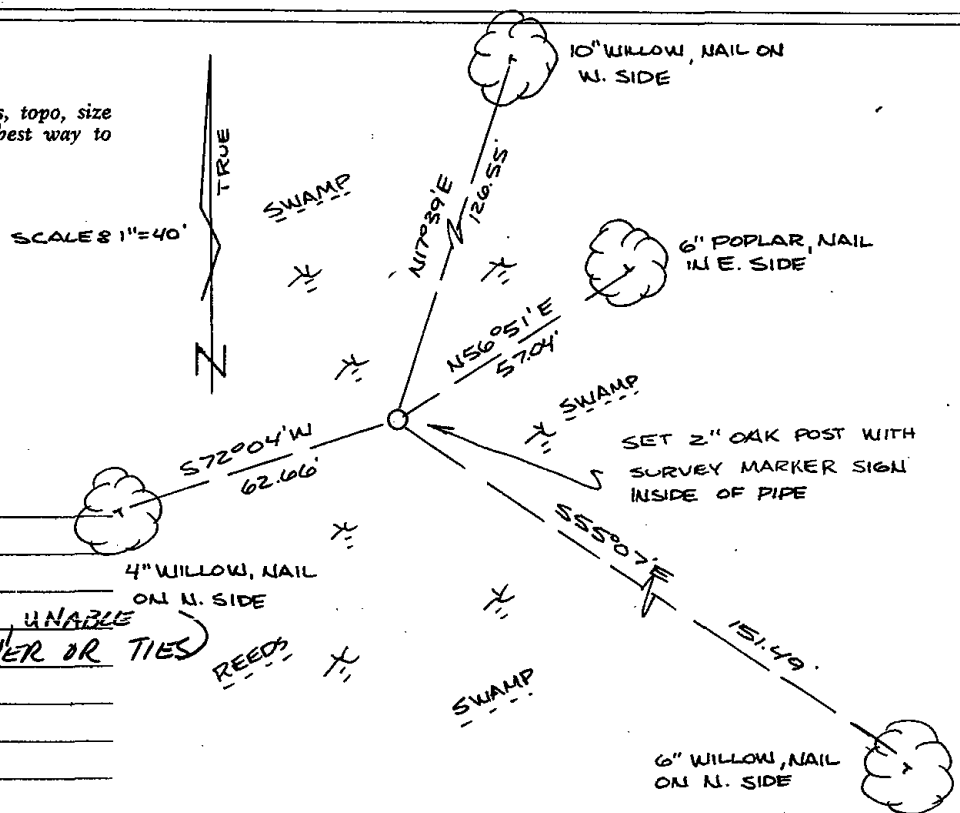
David C. Riesop
Registered Land Surveyor

DATE: 8/25/83

filed for record this 28th
day of Sept 1983
per 59.60 Wisconsin Statutes.
D. Riesop
ADAMS COUNTY SURVEYOR

TIE SKETCH

Show at least four ties, also fence lines, roads, topo, size and type of witness trees and if off road - best way to arrive at corner.



MAINTENANCE RECORD

Date	Init.	Remarks
6-12-92	JG-BS	OK
11-7-07	JG	GPS INTO AREA UNABLE TO LOCATE CORNER OR TIES