

22
SECTION

19
TOWN

07
RANGE

ADAMS COUNTY

COUNTY CORNER NO: 88

ROMPORTOL ID: 41907220020

PUBLIC LAND SURVEY MONUMENT RECORD

TYPE OF MONUMENT: 2-3/8" O.D. IRON PIPE
ADAMS COUNTY COORDINATES, NAD 83 (2007)

N. 266626.719

E. 575366.811

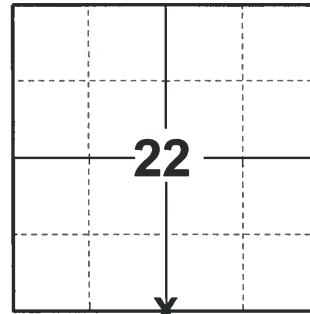
ELEVATION- DATUM

FIELD WORK DATE: 04/16/2019

BASIS FOR MONUMENT LOCATION

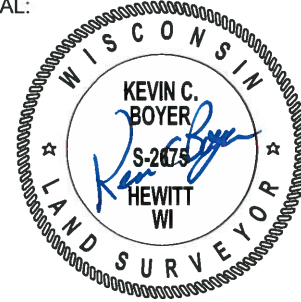
1983 - PLS 1551 SEARCHED CORNER AREA, NOTHING WAS FOUND, NO OCCUPATION IS EVIDENT IN AREA. DID NOT LOOK FOR REMAINS OF ORIGINAL BEARING TREES BECAUSE THE BOTH WERE ASPEN. CORNER WAS RESET PROPORTIONALLY ON A STRAIGHT LINE BETWEEN ADJACENT SECTION CORNERS.

2019 - PLS 2675 FOUND 2-3/8" O.D. IRON PIPE 10" ABOVE THE SWAMP SURFACE AND NO TIES OR WITNESSES. ACCEPTED THE 2-3/8" O.D. IRON PIPE AS THE CORNER LOCATION AND SET 4 NEW TIES.



LOCATION
(INDICATE CORNER BY "X")

SEAL:

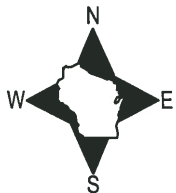


DATA SHOWN HERE ON THIS TIE SHEET IS CORRECT AND COMPLETE TO THE BEST OF MY KNOWLEDGE AND BELIEF.

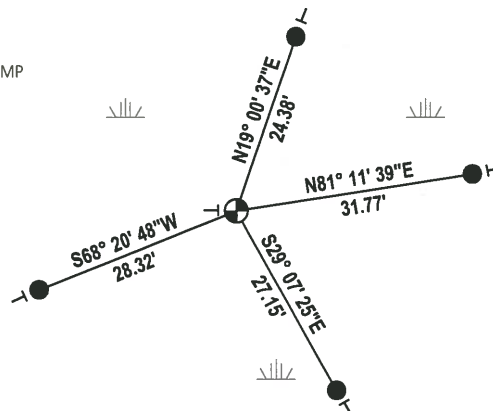
PROFESSIONAL LAND SURVEYOR

DATE 5/1/19

TIE SKETCH



OPEN SWAMP



- SET 3/4" x 48" IRON REBAR, 1.50#/FT
- ⊕ FOUND 2-3/8" O.D. IRON PIPE MONUMENT
- VINYL "T" POST

U.S. PUBLIC LAND SURVEY MONUMENT RECORD

ADAMS COUNTY

TYPE OF MONUMENT: 2" I.D. x 60" galvanized pipe

STATE PLANE COORDINATES: N _____
E _____

ELEVATION — M.S.L. DATUM: _____

THETA ANGLE: _____

FIELD BOOK: Adams County PAGE 60

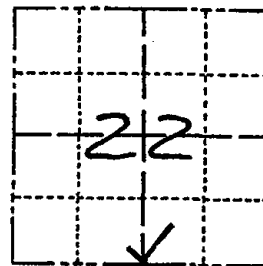
DRAWN BY: D. Riesop

CORNER NO. 88

SECTION 22

TOWN 19N

RANGE 7E



LOCATION
(Indicated by 'X')

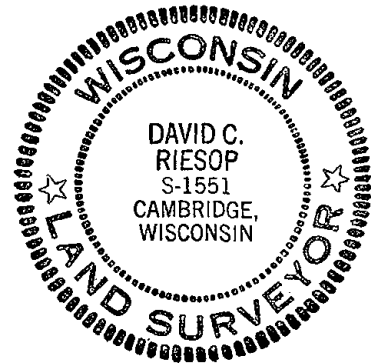
BASIS FOR MONUMENT LOCATION

Show info such as: History of corner, with reference to Vol. and pg., dates, surveyor; exact description of monument replaced; if location computed, by taped or EDM traverse; landowner remarks, etc. (Use reverse side if necessary)
(in conformance with Section A-E 502 of the Wisconsin Administrative Code)

Searched corner area, nothing was found, no occupation is evident in area. Did not look for remains of original bearing trees because they both were Aspen.

Corner was reset proportionally on a straight line between adjacent section corners.

SEAL:



DATA SHOWN HERE ON
CERTIFIED CORRECT:

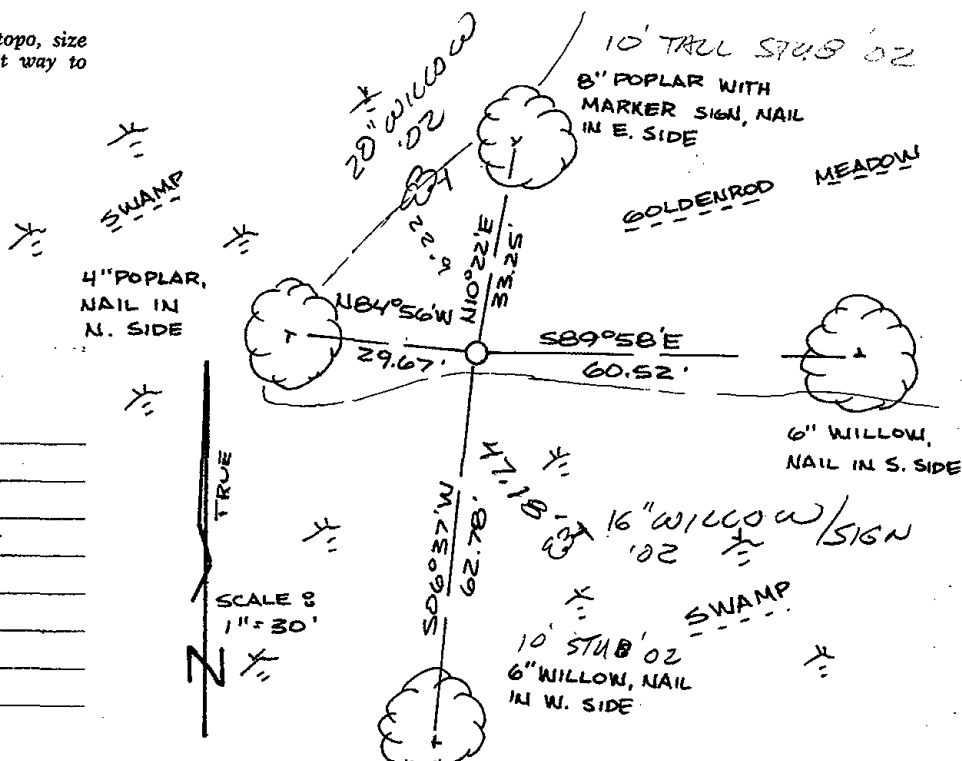
David C. Riesop
Registered Land Surveyor

DATE: 7/28/83

TIE SKETCH

Show at least four ties, also fence lines, roads, topo, size and type of witness trees' and if off road - best way to arrive at corner.

Filed for record this 17th day of August, 83 per 59.60 Wisconsin Statutes.
Richard
ADAMS COUNTY SURVEYOR



MAINTENANCE RECORD

Date	Init.	Remarks
6-12-92	JG-B5	OK
5-21-02	JG-SS	Z NEW TIES